

# CBLVCAT - Batch

## Dataset Reporting and Tuning

### Print output from Batch Dataset Report

```
ICBLVCAT REL 2.12 AT CBL - Bridgend UK (Internal Only) OS JOB=DRA 11.14 WED 30 JULY 2008 PAGE 1
lc key=nbj

ICF CAT CBLMCT (3390) TYPE NRECS PCNT ---- ALLOC TRACKS ---- FRSP LMAX KL,RKP CFSIZE BUFSP EXCPS TIMESTMP
-----
TOTAL PRIME SEC CI CA ---- /BLK/IMB ----- /IXL -----

NBJ.CBLI.CMX NONVSAM VOL1=CBLM06 3390 2008/01/25
NBJ.CBLI.DIST.CMX NONVSAM VOL1=CBLM07 3390 2008/06/04
NBJ.CBLI.DIST.LST NONVSAM VOL1=CBLM08 3390 2008/06/04

ICF CAT CBLMCT (3390) TYPE NRECS PCNT ---- ALLOC TRACKS ---- FRSP LMAX KL,RKP CFSIZE BUFSP EXCPS TIMESTMP
-----
TOTAL PRIME SEC CI CA ---- /BLK/IMB ----- /IXL -----

AGE,KSDS,WTEST KSDS(R) 24 ** ALL** 2 1 1 4085 10.0 4056 8704+ 13 2008/09/20 16.31.38 2008/03/07
IX 3 5.2 VOL1=CBLM01 1 1 505 512 IXL*2 14 2008/03/07

** SEV 2-01 ** BUFSP TOO SMALL FOR EFFICIENCY 204 2008/05/27 11.21.54
** SEV 2-13 ** INDEX EXCPS EXCEED DATA
* SEV 1-09 * FILE GETTING/IS FULL 336
* SEV 1-14 * KSDS-RIIX-VRDS HVS NO IMBEDDED FREE SPACE
* SEV 1-18 * SEC EXTENTS EXIST
* SEV 1-22 * SPEED NOT DEFINED - RECOVERY IS DEFAULT 6887 2008/06/07 15.45.51

CBL TUNED *****
DATA ( (3,3) - * OPTIMISED FOR DEVICE GEOMETRY
TRACKS (10240) - * 10K MINIMUM FOR DIRECT PROCESSING
BUFFERSPACE (10240) ) * DON'T ALLOW DEFAULT 418
SPEED 92 2008/06/21 14.15.08

* USING AVLRECL=8009 --- FILE CAPACITIES (NRECS) ---
* TUNED CURRENT
* PCHT PRIME SEC PCHT PRIME SEC
* INH LOAD 90 36 36 92 12 12
* FREE 0 0 0 0 0 0
* .. .. .. .. .. ..
* 90 36 36 92 12 12
* .. .. .. .. .. ..

OPTIONAL JCL OVERRIDE FOR SEQ 1-0
*****
BUFID=5 * (20K) FAST
BUFID=0 * (32K) URGENT
BUFID=32 * (128K) **TURBO** (BUT WILL IMPACT OTHER WORK)
```

Print output from Batch Tuning Report

### PERFORMANCE

CBLVCAT is written in assembler language and reads catalogs directly, so is astonishingly quick. It contains no hooks into the system.

### PLATFORMS

CBLVCAT is available for all mainframe environments. Common commands and parameters used across MVS, VSE & CMS.

### INTERACTIVE

CBLVCAT batch includes the interactive environment. See overleaf.

### TECHNICAL SUPPORT

CBL Support and help desk is completely free to licensed customers. Your feedback drives our Software Development!

- REPORTS:** Reports for ICF/VSAM catalogs and VTOCs, specifically designed to produce details with most useful information to user. The reports produced are significantly more readable than standard system reports.
- CUSTOMISED:** Create customised reports, choosing order/width of selected columns, or alternatively use standard reports using minimal control statements.  
Sort report by column name(s). SUBSET parameters provide control for filtering of entries.
- TUNING:** User control over principal tuning parameters allows local knowledge of the file's processing to influence eventual recommendations. e.g. average record length, file growth, maximum/minimum CFSIZE  
Options are available for tuning based on dataset growth, average record length, CI/CA or number of records.
- VTOC:** Produce detailed VTOC reports using a generic volume mask.  
VTOC free space table shows start, and number of free tracks on the volume.
- REORG:** Generate REORG decks; including reproduction of IDCAMS define parameters for a file/subset of files, with or without tuning recommendations.
- VSE:** VSE users can display their Partition, Class and Standard Labels in a clear readable report.

CBLVCAT Interactive provides a set of tools to enhance the way you work in the mainframe system, including interactive editing & searching of files.

# CBLVCAT - Interactive

On a large multi-windowed 3270 screen

## INCREASE PRODUCTIVITY

Increases productivity and makes common tasks much simpler to execute.

## INTERACTIVE

The interactive component is included with any Mainframe CBLVCAT licence at no extra charge.

## BATCH

See overleaf for batch functionality.

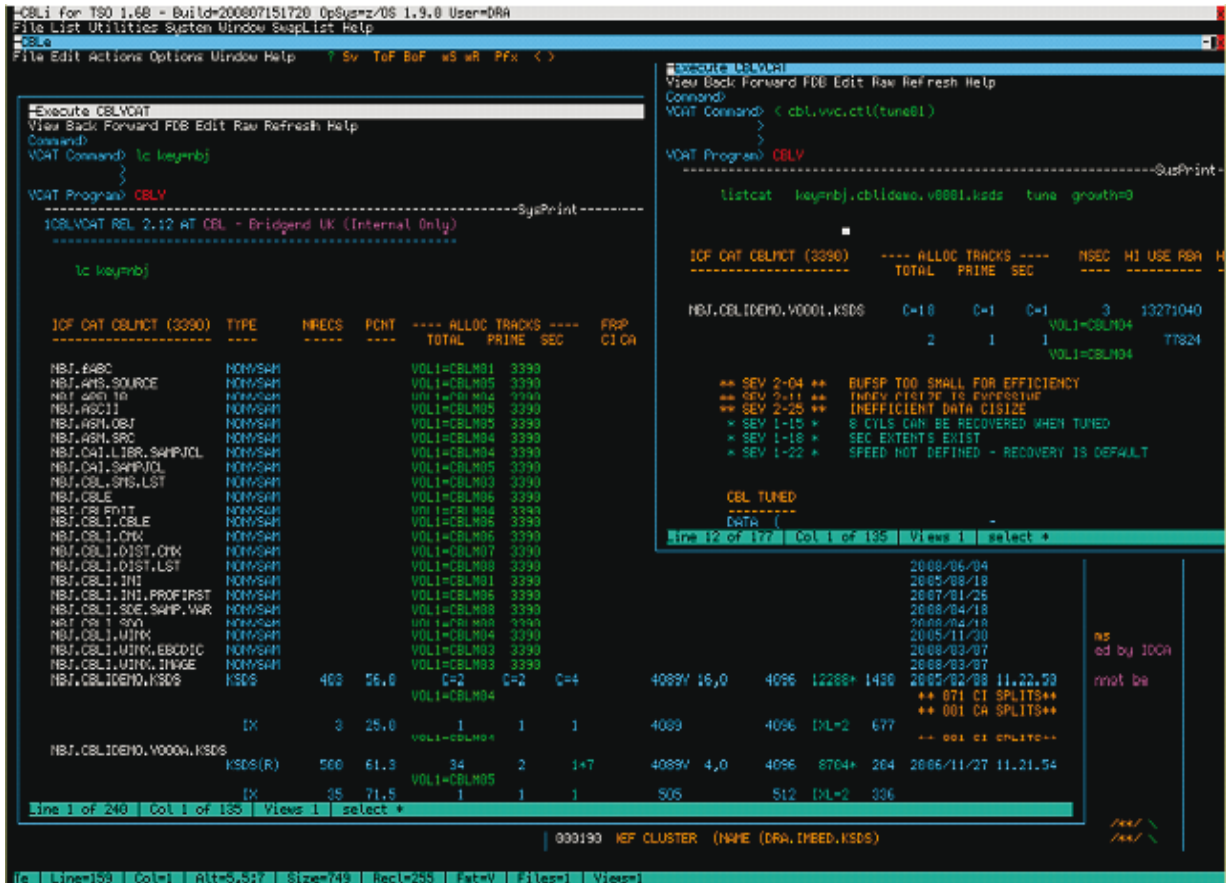
## SYSTEM REQUIREMENTS

CBLVCAT Interactive runs on z/OS, z/VM and z/VSE.

Under TSO, CMS or as a VTAM application on z/OS and z/VSE.

## DISASTER RECOVERY

Under VTAM, the interactive environment, with its full function editor, can be used for disaster recovery when TSO or ISPF is down.



## Interactive Features

- \* Runs in a 3270 multi-windowed environment which includes a state of the art editor. Window sizes may be adjusted or maximised.
- \* The interactive environment integrates with CBLVCAT to provide colour dataset listings in an interactive window and includes everything the batch product does.
- \* Each entry of the interactive CBLVCAT report supports prefix commands, to perform further processing on the file. e.g. Tune, Copy, Delete, Rename, Browse, Edit.
- \* The Tune prefix will generate an IDCAMS REORG JCL deck for any file, with required tuning parameters. The deck is placed in the editor ready for submission to batch.
- \* Interactive report data can be routed to REXX variables for further processing.
- \* Any Interactive report window can be saved as an editable file for documentation or later printing.
- \* The Point and Click Command Centre can be used to store all your common commands for future execution.
- \* Interactive IDCAMS execution to delete/define/repro files without having to submit to batch.
- \* VSAM Definition and Dataset ALLOC windows simplify creation of new datasets.
- \* The Editor provides virtually unlimited edit sessions, multiple undo/redo, cut/paste, block copy.
- \* Macros for the interactive environment are written in REXX, simplifying local customisation.
- \* Sort on column headings for any list window.
- \* List windows offer Interactive SORT /SUBSET /FILTER using SQL-like SELECT/WHERE command.
- \* Generic multi-file search with update.
- \* Point and click access to volumes, libraries, datasets, ALLOCs etc.



Compute (Bridgend) Ltd  
8 Merthyr Mawr Road  
BRIDGEND,  
CF31 3NH  
+44 (0) 1656 652222  
www.cbl.com