



Product Suite 3.40 Customisation Guide

8 Merthyr Mawr Road, Bridgend, Wales UK CF31 3NH

Tel: +44 (1656) 65 2222

Fax: +44 (1656) 65 2227

Eml: support@cbl.com

CBL Web Site - <http://www.cbl.com>

This document may be downloaded from <http://www.cbl.com/documentation.php>

Contents

Documentation Notes.....	1
Summary of Changes.....	1
Preparation for SELCOPY Product Suite Customisation.....	3
Mandatory Tasks.....	3
Installed Libraries.....	4
Installation and Configuration Check List.....	4
Accessing the SELCOPY Product Suite.....	5
Add Load Libraries to the LINKLIST Concatenation.....	5
Update the TSO Logon Procedure.....	5
Tailor the SELCOPY/i Invocation REXX Procedure.....	6
APF-Authorisation.....	7
Customising SELCOPY.....	8
Applying the SELCOPY Licence Keys.....	8
The SELCNAM Data Set.....	8
Existing SELCOPY Users.....	8
New SELCOPY Users.....	8
Configure SELCOPY Default Options.....	9
SELCOPY DB2 Interface.....	10
SELCOPY ADABAS Interface.....	11
SELCOPY IMS/DL1 Interface.....	11
SELCOPY SLC Message File.....	11
Authorised SELCOPY (AC=1).....	11
Customising SELCOPY/i.....	12
SELCOPY or CBLVCAT Licence Key Pre-requisite.....	12
Enable Execution in TSO (no ISPF).....	13
Enable Execution in ISPF.....	13
Add SELCOPY/i to the ISPF Primary Option Menu.....	13
Define SELCOPY/i in an ISPF Command Table.....	14
Enable Execution from VTAM USS.....	14
Define VTAM SELCOPY/i APPL Definition Statements.....	14
Add the SELCOPY/i Cataloged Procedure to a JES PROCLIB.....	14
Starting the SELCOPY/i VTAM Application.....	15
Start SELCOPY/i.....	15
User Logon to SELCOPY/i.....	15
Stopping the SELCOPY/i VTAM Application.....	15
Enable SELCOPY/i DB2.....	16
DB2 Run-time Libraries.....	16
BIND the SELCOPY/i DB2 Plan.....	16
Grant access to DB2 catalogs.....	16
SELCOPY/i VTAM Application DB2 Connection.....	17
System INI File Configuration.....	17
Existing SELCOPY/i System INI File.....	18
New SELCOPY/i System INI File.....	18
Security Considerations.....	19
SELCOPY/i Resource Access.....	19
DATASET Write Protection.....	19
Health Check.....	20
Customising CBLVCAT.....	21
Applying the CBLVCAT Licence Keys.....	21
Configure CBLVCAT Default Options.....	22
Enable Execution in TSO.....	24
Install the VCI SVC for Interactive Execution.....	24
Verify SVC/ESR Availability.....	25
Apply USERMOD to Create SVC Module Alias.....	25
Add SVC Module to the LPA.....	26
Add SVC Module to the SVC Table.....	26
Appendix A. CBLNAME Options Module (All Components).....	27
Maintaining CBLNAME.....	27
Existing CBLNAME Source Member.....	27
Mandatory Options.....	28
Options Common to Both SELCOPY and CBLVCAT.....	29
SELCOPY Options.....	29
Options Relevant to All Systems.....	29
Options Relevant to z/OS Systems.....	30
Options Relevant to VSE Systems.....	31
Options Relevant to VM/CMS Systems.....	33
CBLVCAT Options.....	34
General CBLVCAT Options.....	34
CBLVCAT VTOC Report Options.....	35
CBLVCAT Catalog Report Options.....	36
CBLVCAT Tuning Options.....	38
CBLVCAT DEFINE Output Options.....	40

Contents

Appendix B. SELCNAM Options File (SELCOPY)	42
Maintaining SELCNAM.....	42
SELCOPY Already Installed.....	42
Mandatory Options.....	43
SELCOPY Options.....	43
Appendix C. INI Options Files (SELCOPY/i)	46
The System INI File.....	46
Maintaining the SELCOPY/i System INI File.....	46
The User INI File.....	47
Maintaining the SELCOPY/i User INI File.....	47
FIRSTUSE Utility.....	48
FIRSTUSE SITE.....	48
INI File Option Format.....	49
INI Variable Names.....	49
INI Variable Values.....	49
INI Options Summary.....	50
System INI Options.....	52
(COBOLREPLACE) - z/OS Systems Only.....	52
(EDIT).....	52
(RACF) - z/OS Systems Only.....	52
(SYSTEM).....	53
(TABLES).....	54
System & User INI Options.....	55
Non-Customisable SELCOPY/i INI Options.....	55
Customisable SELCOPY/i INI Options.....	55
(CBLVCAT).....	55
(COBOLREPLACE) - z/OS Systems Only.....	56
(DB2) - z/OS Systems Only.....	56
(DLI) - z/OS Systems Only.....	56
(EDIT).....	57
(HELP).....	60
(IPO).....	60
(ISPF) - z/OS Systems Only.....	60
(ISPFEDIT) - z/OS Systems Only.....	60
(SDE) - z/OS Systems Only.....	61
(SELCOPY).....	62
(SYSTEM).....	62
(TABLES).....	64
(TRACE).....	64
Displaying INI Fileids and Options.....	65

Documentation Notes

The **SELCOPY Product Suite Customisation Guide** is available in Adobe Acrobat PDF format at CBL web page <http://www.cbl.com/cblidoc.html>.

Copyright in the whole and every part of this document and of the CBL software system and programs is owned by Compute (Bridgend) Ltd whose registered office is located at 8 Merthyr Mawr Road, Bridgend, Wales, UK, CF31 3NH and who reserve the right to alter, at their convenience, the whole or any part of this document or the CBL software system and programs.

No reproduction of the whole or any part of the CBL software system and programs, or of this document, is to be made without prior written authority from Compute (Bridgend) Ltd.

At the time of publication, this document is believed to be correct. Where a program product differs from that stated herein, Compute (Bridgend) Ltd reserve the right to revise either the program or its documentation at their discretion.

CBL does not warrant that upward compatibility will be maintained for use made of a program product to perform any operation in a manner not documented within this publication.

Summary of Changes

This section summarises significant changes.

Changes made in SELCOPY Product Suite 3.40

- ◇ Introduce **Health Check** section offering a free one-on-one consultation with a CBL technician to verify complete and successful SELCOPYi customisation.

Changes made in SELCOPY Product Suite 3.30

- ◇ Release number changes only.

Changes made in SELCOPY Product Suite 3.20 Service RS32006

- ◇ Include **DB2 Run-time Libraries** section under **Enable SELCOPY/i DB2**. This describes the methods by which DB2 load libraries are made available to the SELCOPY/i component.

Changes made in SELCOPY Product Suite 3.20 Service RS32002

- ◇ Include SELCOPY/i **INI Options Summary**, reference to important INI options in **System INI File Configuration** and descriptions of INI options for TABLES.

Changes made in SELCOPY Product Suite 3.20

- ◇ First Use Site Panel has been introduced which gets invoked when SELCOPY/i is started and the System INI file does not yet exist. This replaces manual input previously required when creating the SELCOPY/i System INI for the first time. (See **System INI File Configuration**)

Note that the DSN of the SELCOPY/i System INI file is identified via **INamDsn=** in the CBLNAME option module.

- ◇ Introduce job ZZIUMODA and section "**Authorised SELCOPY (AC=1)**" for optionally generating an authorised copy of the SELCOPY program.

Changes made in SELCOPY Product Suite 3.10

- ◇ FIRSTUSE USER no longer requires interaction by the user the first time SELCOPY/i is started by that user. Version 3.10 initialises a new user's SELCOPY/i User INI file with selected options (based on System INI file values) which the user may later configure via the "Settings" panels. (Option "0" from the SELCOPY/i Primary options menu panel.)
- ◇ SELCOPY/i INI variable **COBOLREPLACE** supporting options *nnFR* and *nnTO*, has been introduced so that one or more COBOL REPLACE statement FROM/TO pairs may be defined for SDE data copy book editing.

Changes made in SELCOPY Product Suite 3.00

- ◇ IBM SMP/E tool is now used to install and maintain the SELCOPY Product Suite on z/OS systems. This includes the introduction of a Program Directory which documents creating the SMP/E environment and the RECEIVE, APPLY and ACCEPT steps.
- ◇ Product delivery is via the CBL FTP site which allows for SMP/E RECEIVE FROMNETWORK operation. Alternatively, the product package may be downloaded as a .Zip or .pax.z file for upload and expansion on the z/OS host. Details of each method are documented in the README document that accompanies the product package.
- ◇ CBLNAME option **Error584=YES|NO** has been introduced to replace the special zap (Ref: SQ11632) which disabled the following message in SELCOPY releases 2.00, 2.01 and 2.02:

*** SELECTION TIME ERROR 584 *** F=xxxxxxx - OUTPUT DSN ALREADY OPEN UNDER DIFF FN

If this special zap was applied to these releases of SELCOPY, then Error584=No must be implemented, otherwise SELCOPY control statements must be ammended to avoid conflicting I/O.

Preparation for SELCOPY Product Suite Customisation

SELCOPY Product Suite is comprised of three major software components, namely SELCOPY, SELCOPY/i and CBLVCAT.

Before components of the SELCOPY Product Suite can be executed successfully, some mandatory customisation tasks must be performed. This document is provided to identify and describe all software customisation tasks, both mandatory and optional.

Sub-sections:

1. [Mandatory Tasks](#)
2. [Installed Libraries](#)
3. [Install and Configuration Check List](#)
4. [Accessing the SELCOPY Product Suite](#)
5. [APF-Authorisation](#)

Mandatory Tasks

Before any components of the SELCOPY Product Suite can be executed successfully, the following post-installation tasks **must** be performed:

- Make SELCOPY Product Suite load modules, EXEC procedures, ISPF Panels and Tables available to users. This is described in "[Accessing the SELCOPY Product Suite](#)" on page 4.
- For SELCOPY licensees only, include reference to your chosen SELCNAM DSN in the CBLNAME options module source and allocate a SELCNAM data set containing your installation's unique site string, SELCOPY component licence key and operational date range. This is described in "[Applying the SELCOPY Licence Keys](#)" on page 7.

Note that installations must be licensed for the component product SELCOPY, CBLVCAT or both in order to successfully execute not only the individual licensed component, but also all other components of the SELCOPY Product Suite (including SELCOPY/i.)

- For CBLVCAT licensees only, include your installation's unique site string, CBLVCAT component licence key and operational date range in the CBLNAME options module. This is described in "[Applying the CBLVCAT Licence Keys](#)" on page 19.

See the note above regarding SELCOPY Product Suite product licensing.

- Customise additional mandatory and optional SELCOPY and CBLVCAT options in the CBLNAME options module source, then re-assemble and link edit it into the product load library. This is described in Appendix A, "[CBLNAME Options Module](#)" on page 25.

Note that the CBLNAME load module in CBL.SZZSLOAD is distributed with default options and dummy licence keys so will not allow successful execution of SELCOPY Product Suite components.

- Start SELCOPY/i to allocate and customise the SELCOPY/i System INI file using the SELCOPY/i install procedure FIRSTUSE SITE. This is described in "[System INI File Configuration](#)" on page 16.
- Allocate the SLC Messages data set for the SLC batch utility. (Enables generation of SELCOPY/i data set lists in batch.) This is described in "[SELCOPY SLC Message File](#)" on page 10.

Note that, based on your operating environment, other tasks that are itemised under "[Installation and Configuration Check List](#)" may also be considered mandatory. Please review each task description carefully to identify those that apply to your installation.

Installed Libraries

If the SELCOPY Product Suite package was installed with the recommended library names using the default high level qualifier, then the target and distribution library names will be as follow:

Target Library	Distribution Library	Description
CBL.SZZSSAM1	CBL.AZZSSAM1	Fixed 80 Sample jobs, procs and source.
CBL.SZZSLOAD	CBL.AZZSMOD	SELCOPY Product Suite Load Modules.
CBL.SZZSLPA		CBLVCAT specific SVC for inclusion in the Link Pack Area.
CBL.SZZSMAC	CBL.AZZSMAC	SELCOPY Product Suite Macros.
CBL.SZZSEXEC	CBL.AZZSEXEC	SELCOPY Product Suite Execs.
CBL.SZZSPENG	CBL.AZZSPENG	SELCOPY Product Suite ISPF Panels.
CBL.SZZSTENG	CBL.AZZSTENG	SELCOPY Product Suite ISPF Tables.
CBL.SZZSHELP.HTML	CBL.AZZSHELP.HTML	SELCOPY Product Suite Help.
CBL.SZZSDIST.CBLE	CBL.AZZSDIST.CBLE	SELCOPY/i Edit Macros.
CBL.SZZSDIST.CMX	CBL.AZZSDIST.CMX	SELCOPY/i Skeleton CMX Files.
CBL.SZZSDIST.IPO	CBL.AZZSDIST.IPO	SELCOPY/i XML Panels.
CBL.SZZSDIST.IPOPROC	CBL.AZZSDIST.IPOPROC	SELCOPY/i XML Panel Procedures.
CBL.SZZSDIST.TLIB	CBL.AZZSDIST.TLIB	SELCOPY/i Tables.
CBL.SZZSSAM2	CBL.AZZSSAM2	Variable Length Sample Data.
CBL.SZZSDBRM	CBL.AZZSDBRM	SELCOPY Product Suite DBRMs.

Throughout this document, references are made to the product libraries using these names. If you have chosen alternate library names, then you must substitute references to product libraries as appropriate.

Installation and Configuration Check List

The following table is a summary of steps to customise SELCOPY Product Suite components for successful operation in your environment.

Each check list item must be reviewed to identify whether it applies to you operating environment. Items flagged with "*" are mandatory and must be actioned for successful operation.

	Description	Page
1.	Concatenate SELCOPY Product Suite load library to LINKLST.	4
2.	Tailor the TSO Logon procedure. *	4
3.	Tailor the SELCOPY/i TSO EXEC. *	5
4.	Customise SYSEXEC, ISPLIB and ISPTLIB definitions. *	4/5
5.	APF-Authorise SELCOPY Product Suite load library.	6
6.	Provide the SELCOPY licence key in SELCNAM. *	7
7.	Customise SELCOPY environment options.	8
8.	Bind the SELCOPY DB2 plan.	9
9.	Link edit the SELCOPY ADABAS user module.	10
10.	Create the SLC message file. *	10
11.	Provide the CBLVCAT licence key in CBLNAME. *	19
12.	Customise CBLVCAT environment options.	20
13.	Assemble and Link edit the CBLNAME options module. *	25
14.	Enable CBLVCAT execution in TSO.	22
15.	Add SELCOPY/i to the ISPF menu.	12
16.	Define SELCOPY/i in an ISPF command table.	13
17.	Define SELCOPY/i as a VTAM application.	13
18.	Bind the SELCOPY/i DB2 plan.	15
19.	Grant access to DB2 catalogs for SELCOPY/i DB2.	15
20.	Configure the SELCOPY/i System INI file. *	16

	21.	Link edit the CBLVCAT Interactive (VCI) SVC.	22
	22.	Add the VCI SVC module to the LPA list.	24
	23.	Add the VCI SVC to the SVC table.	24
	25.	Review access to product configuration files and resources.	17

Accessing the SELCOPY Product Suite

Executable modules for components of the SELCOPY Product Suite (SELCOPY, SELCOPY/i and CBLVCAT) are made available to users via the following:

- Include load library CBL.SZZSLOAD in the LINKLIST concatenation.
- For execution in a TSO environment, include CBL.SZZSLOAD in a STEPLIB concatenation in the TSO Logon procedure.
- For execution of SELCOPY/i, assign CBL.SZZSLOAD to variable **szssllib** in the SELCOPY/i initialisation REXX procedure, SELCOPYI.

Note that access to EXEC, ISPF Panel and Table libraries is also required for successful execution. See the following text relating to update of the TSO Logon Procedure and the SELCOPY/i Invocation REXX Procedure.

Add Load Libraries to the LINKLIST Concatenation

Add the CBL.SZZSLOAD library name to your LINKLIST library concatenation to make all components of the SELCOPY Product Suite commonly available to all tasks.

To add this library to the LINKLIST concatenation, insert them in your active PROGxx parmlib member. e.g.

```
LNKLST ADD NAME(LNKLST00) DSN(CBL.SZZSLOAD) VOLUME(CBLM06)
```

Alternatively, insert it in your active LNKLSTxx parmlib member. e.g.

```
CBL.SZZSLOAD(CBLM06)
```

Update the TSO Logon Procedure

If the LINKLIST does not include the SELCOPY Product Suite load library, CBL.SZZSLOAD, then SELCOPY, SELCOPY/i and CBLVCAT may be made commonly available in the TSO environment by adding this library to the STEPLIB DD statement in your standard TSO logon procedure. e.g.

```
//STEPLIB DD ....
//          DD DISP=SHR,DSN=CBL.SZZSLOAD
```

If updating your TSO logon procedure, then the following target libraries should also be included:

1. REXX procedure library CBL.SZZSEXEC in the SYSEXEC concatenation.
2. ISPF panel library CBL.SZZSPENG in the ISPPLIB concatenation.
3. ISPF table library CBL.SZZSTENG in the ISPTLIB concatenation.

Additional considerations for the STEPLIB concatenation:

- Use of SELCOPY and SELCOPY/i DB2 facilities require that the DB2 SDSNEXIT and SDSNLOAD libraries are available from the standard load module search sequence. Currently, SELCOPY/i only supports connection to DB2 subsystems that share the same DB2 libraries.
- To use COBOL and/or PL/1 Copybooks to map formatted records for SELCOPY/i Structured Data Editing, the Enterprise COBOL and/or PL/1 compiler module must be available to SELCOPY/i.

By default, SELCOPY/i will invoke compiler modules IGYCRCTL (COBOL) and IBMZPLI (PL/1) from the standard load module search sequence. Alternatively, you can configure your installation's specific COBOL and PL/1 load libraries and compiler module names using the SELCOPY/i System INI file options, **COBOLCompiler=fileid** and **PL1Compiler=fileid**. You will receive prompts to customise these options during the automated setup of the SELCOPY/i System INI file - see "Customising SELCOPY/i - [System INI File Configuration](#)".

If required, individual users may subsequently tailor their own default COBOL and PL/1 compiler libraries and module names using the SDE command, "SET COMPILER". COBOL".

Tailor the SELCOPY/i Invocation REXX Procedure

If you do not want to update the TSO logon procedure, then, for the SELCOPY/i component only, the SELCOPYI REXX procedure in CBL.SZZSEXEC may be configured to use the required libraries.

Only values assigned to the following variables may be updated. Do not remove or make changes to any other statement in the SELCOPYI REXX procedure. e.g. Do not use a CHANGE ALL edit command to update the string values as they occur elsewhere in the REXX procedure.

```
szzsl1lib=" '*CBL.SZZSLOAD*' "          /* SELCOPY/i LOAD Library. */
szzspl1lib=" '*CBL.SZZSPENG*' "        /* SELCOPY/i PANEL Library. */
szzst1lib=" '*CBL.SZZSTENG*' "        /* SELCOPY/i TABLE Library. */
szzsexec=" '*CBL.SZZSEXEC*' "         /* SELCOPY/i EXEC Library. */
sdsn1lib=" '*DSN.SDSNLOAD*' "         /* DB2 LOAD Libraries. */
```

If updated, each variable should be assigned to the relevant target install library name and must be enclosed in single quotation marks (apostrophes). Where a variable is assigned to null or its default value (as illustrated above), then no action will be taken for that variable.

Multiple, blank separated library names may be specified on any of the variables. In particular, this is necessary for the DB2 load libraries variable *sdsn1lib*. e.g.

```
sdsn1lib=" 'DSN910.SDSNEXIT' 'DSN910.SDSNLOAD' " /* DB2 LOAD Libraries. */
```

Where variable *szzsexec* has been modified, then the TSO command `ATLIB ACTIVATE APPLICATION(EXEC)` will be issued to provide access to SELCOPY Product Suite REXX procedures.

If executing SELCOPY/i in an ISPF environment, then LIBDEF statements for ISPLLIB, ISPPLIB and ISPTLIB will be executed as appropriate for each modified variable. Where *sdsn1lib* has been modified to identify the DB2 SDSNLOAD and SDSNEXIT libraries, then these will be concatenated to the LIBDEF ISPLLIB statement.

If executing SELCOPY/i in a TSO environment without ISPF, then the SELCOPY/i executable modules will be called from the first load library specified by variable *szzsl1lib*.

Notes:

1. If CBL.SZZSEXEC is not included in the TSO SYSEXEC concatenation, then, whether or not modifications are made to it, the distributed SELCOPY/i initialisation REXX procedure, SELCOPYI, must be copied to a library that is defined in the SYSEXEC or SYSPROC concatenation at the time ISPF is started.

Procedure SELCOPYI is always used to start SELCOPY/i.

2. Do not execute the SELCOPYI procedure until you have completed other [SELCOPY/i customisation](#) steps illustrated in the [Installation and Configuration Check List](#).
3. SELCOPY Product Suite batch utility components, SELCOPY and CBLVCAT may be executed within the SELCOPY/i environment. They can, however, be executed natively in a TSO environment, in which case they should be invoked using a CLIST or REXX procedure that calls the product load module from a specified load library.

See STERM and VTERM in library CBL.SZZSEXEC for examples of SELCOPY and CBLVCAT execution in a TSO environment. These examples expect to find the product load modules in the standard load module search sequence.

APF-Authorisation

If the CBLVCAT component is licensed at your installation or want to be able to execute the SELCOPY/i component as a stand-alone VTAM application, then library CBL.SZZSLOAD must be added to the list of authorised libraries.

CBLVCAT must be APF-authorized in order to open catalogs for input in order to generate catalog reports and VSAM data set tuning recommendations. SELCOPY/i as a VTAM application requires APF-authorization in order to perform a RACF logon for each logged on user.

To add CBL.SZZSLOAD to the APF list, insert it in your active PROGxx parmlib member. e.g.

```
APF ADD DSNAME(CBL.SZZSLOAD)                VOLUME(CBLM06)
```

Alternatively, insert this library in your active IEAAPFxx parmlib member.

See *MVS Initialisation and Tuning Reference* for further information on updating PROGxx and IEAAPFxx parmlib members.

To avoid having to schedule an IPL, CBL.SZZSLOAD can be dynamically added to the APF authorised library list by executing the following MVS system command:

```
SETPROG APF,ADD,LIB=CBL.SZZSLOAD,VOLUME=CBLM06
```

To verify that the library is in the APF list, execute the following MVS system command:

```
DISPLAY PROG,APF,DSNAME=CBL.SZZSLOAD
```

Customising SELCOPY

This chapter describes how to customise the SELCOPY batch utility component of the SELCOPY Product Suite. This should be done following install of the SELCOPY Product Suite package.

Sub-sections:

1. [Provide the SELCOPY Licence Keys](#)
2. [Configure SELCOPY Default Options](#)
3. [SELCOPY DB2 Interface](#)
4. [SELCOPY ADABAS Interface](#)
5. [SELCOPY IMS/DL1 Interface](#)
6. [SELCOPY SLC Message File](#)
7. [Authorised SELCOPY \(AC=1\)](#)

Applying the SELCOPY Licence Keys

SELCOPY requires licence information consisting of your installation company name and location (SITE), at least one operational date range (RANGE) and a password key (PASS).

Correct licence information is established at the start of every SELCOPY execution before processing is allowed to continue.

Note that the password key is not dependent on SELCOPY release. i.e. the same licence details may be used for different releases of SELCOPY.

The SELCNAM Data Set

SELCNAM is a cataloged, sequential data set that is read on every execution of SELCOPY.

The SITE, RANGE and PASS details are supplied to your installation by CBL under separate cover and should be entered, exactly as supplied, in your SELCNAM data set. e.g.

```
option SITE='John Smith Ltd - London, UK'  
option RANGE='1981/07/12-2011/07/13'  
option PASS=x'C10D, BB59, 981A, 07FE'
```

The SITE argument string, in particular, is case sensitive and must be entered as supplied by CBL. If the SITE string contains an apostrophe (e.g. ABC Co. - Marlboro', UK), then the string must be enclosed by quotation marks ("), not apostrophes ('). The SITE string must also be entered on the Site option in CBLNAME.

The DSN of the SELCNAM data set is configured using the *SNamDSN* option in the CBLNAME options module. See Appendix A, "[CBLNAME Options Module](#)" for details on customising and updating CBLNAME.

For testing purposes, the *SNamDSN* option value in CBLNAME may be temporarily overridden for individual executions of SELCOPY by supplying a SELCNAM DD statement for your chosen DSN.

SELCOPY jobs will fail to execute if an exclusive ENQ exists for the SELCNAM data set. Therefore, before attempting to make any changes to SELCNAM, please see "[Maintaining SELCNAM](#)" in Appendix B, "SELCNAM Options File (SELCOPY)".

To avoid update by unauthorised personnel, the SELCNAM data set should be write protected using security manager software (e.g. RACF). However, users must have read access to this data set.

Existing SELCOPY Users

If SELCOPY is already installed, a SELCNAM data set, containing the current licence information, should already exist in the production system.

If so, either update *SNamDSN* in CBLNAME to point at the existing SELCNAM DSN or create a copy of the SELCNAM DSN and update the CBLNAME *SNamDSN* option accordingly.

Note that CBLNAME should be re-assembled for each install of a new release of SELCOPY.

New SELCOPY Users

Use job ZZISNAM in the sample CBL.SZZSSAM1 library to generate a new SELCNAM data set with your chosen DSN and containing your licence details.

Configure SELCOPY Default Options

In addition to the mandatory SNamDSN option in CBLNAME and licence details set in the SELCNAM data set, other SELCOPY environment defaults may be defined for your installation.

The following table details each option and its placement in SELCNAM, CBLNAME or both. Where the same option is set in both SELCNAM and CBLNAME, the setting in SELCNAM will take precedence.

Each option is discussed in more detail under Appendix B, "[SELCNAM Options File \(SELCOPY\)](#)" and Appendix A, "[CBLNAME Options Module](#)."

Note that some options are applicable to both SELCOPY and CBLVCAT products. Unless otherwise stated, the listed options apply to SELCOPY only. Similarly, the operating system to which an individual option applies is indicated by z/OS, CMS, VSE or All (All systems).

CBLNAME Option	SELCNAM Option	Operating System	Description
Site	SITE	All	CBL Supplied Company name and location. (SELCOPY & CBLVCAT)
SPassword	PASS	All	CBL Supplied SELCOPY Password.
SDateRange	RANGE	All	CBL Supplied SELCOPY Date Range.
SNamDsn		All	The SELCNAM DSN.
PageDepth	PAGEDEPTH	All	SYSPRINT/SYSLST Pagedepth Value. (SELCOPY & CBLVCAT)
PageWidth	PAGEWIDTH	All	SYSPRINT/SYSLST Pagewidth Value. (SELCOPY & CBLVCAT)
Separator	SEP	All	Control Statement Command Separator Character. (SELCOPY & CBLVCAT)
SMinRC		All	Sets the minimum return code from SELCOPY to be suppressed.
SAbTrap	ABTRAP	All	Enable/Disable the SELCOPY Abend trap.
SOpsMsg		All	Specifies type of SELCOPY Errors to be reported at the Operator's console.
SDatacomDL1		All	Indicates whether or not DATACOM DL/1 transparency software installed.
SNotFoundMsg		All	Enable/Disable "KEY/REC not found" record following failed direct read.
SRDW	RDW NORDW	All	Determines whether or not the RDW is returned for RECFM=V records.
SPrtStopAft		All	Sets the default STOPAFT value for PRINT output.
SNoOutputRC		All	Sets the return code to be issued by SELCOPY if no output statements are actioned.
	ASA0 NOASA0	All	Determines whether or not ASA print control character 0 is used in the SELCOPY output listing.
	CONTMAX	All	Sets the maximum length of a SELCOPY control statement that is continued over multiple records.
	DATAWIDTH	All	Sets the default number of bytes of data on 1 line of PRINT output.
	NOPRINT	All	Suppress output of SELCOPY's control statements and summary totals to SYSPRINT/SYSLST.
	NOPTOT	All	Suppress output of SELCOPY's summary totals to SYSPRINT/SYSLST.
	NOPCTL	All	Suppress output of SELCOPY's control statements to SYSPRINT/SYSLST.
DB2SubSys	SSN	z/OS	SELCOPY/DB2 Default DB2 Sub-System Name.
DB2Plan		z/OS	SELCOPY/DB2 Dynamic SQL PLAN name.
SVsamRC160		z/OS	Determines whether VSAM RC=160 gives an error or empty data set.
SDynallocFail		z/OS	Determines whether Dynamic Allocation Failure gives an error or empty data set.
SSysBlksize		z/OS	Determines whether or not SMS System Determined BLKSIZE is used when BLKSIZE=0.
SMVSBufIn		z/OS	Default number of input buffers for MVS sequential files.
SMVSBufOut		z/OS	Default number of output buffers for MVS sequential files.
SNamVol		VSE	Volser containing SELCNAM DSN.

SBufSize		VSE	Sets the default I/O buffer size.
SDevType		VSE	Sets the default device type.
SCardIn		VSE & CMS/DOS	Specifies the SELCOPYY control statements input source.
SFailClose		VSE	Determines whether or not files are closed by SELCOPYY if the job fails.
SSP2RetCode		VSE	Enable/Disable SELCOPYY return code for VSE/SP2 and later.
SCancelDL1		VSE	Enable/Disable job CANCEL if a SELCOPYY DL/1 job fails.
SSegLen512		VSE	Determines whether or not a default segment length=512 is to be used for DL/1 MPS.
STapeRewind		VSE	Determines whether CLOSE=RWD or CLOSE=UNLD is default for input tapes.
STapeInLIOCS		VSE	Determines whether or not LIOCS is used for tape input. (Required for CA-EPIC tape encryption.)
SMaxFBABlock		VSE	Sets the maximum FBA block size.
SCMSVsam31		CMS	Identifies CMS/VSAM release as VSE/VSAM release 3.1 or later.
SCPCmds		CMS	Enable/Disable execution of CP commands from SELCOPYY.
SCMSCmds		CMS	Enable/Disable execution of CMS commands from SELCOPYY.
SSTACKCmds		CMS	Enable/Disable execution of STACK commands from SELCOPYY.
SMixedCMS		CMS	Enable/Disable Upper casing of quoted CMS fileid.

SELCOPYY DB2 Interface

SELCOPYY may be used to execute DB2 SQL statements and READ, WRITE, UPDATE and DELETE data in DB2 databases. This is achieved using SELCOPYY's dynamic SQL interface.

In order to support SELCOPYY dynamic SQL statements, the SELCOPYY application plan must be bound to each DB2 subsystem against which SELCOPYY will be executed. Also, EXECUTE privilege for this plan should be granted to PUBLIC.

Note that SELCOPYY's authority to perform actions specified by the generated dynamic SQL statement is based on the set of privileges associated with the assigned SQLID.

Execute sample job ZZIDB2B in CBL.SZZSSAM1 to bind the SELCOPYY plan to a DB2 subsystem using your chosen plan name (default CBLPLAN0.)

Note:

1. The default DB2 subsystem name must be specified either on an "OPTION SSN=" statement in SELCNAM or on the DB2SubSys option in CBLNAME.
2. The default SELCOPYY DB2 application plan name must be specified on the DB2Plan option in CBLNAME.

If you want to bind the SELCOPYY plan to more than one DB2 subsystem, then duplicate the SDB2BIND job step and modify the DSN SUBSYSTEM statement for each subsystem.

Job step SDB2IVP executes SELCOPYY to test its connection to the default DB2 subsystem by reading then printing the first four rows of the SYSIBM.SYSTABLES table.

Before submitting ZZIDB2B, edit and update it as described in the job comment data. The job should complete with RC=0.

SELCOPY ADABAS Interface

SELCOPY may be used to READ and WRITE data in ADABAS databases.

In order to execute SELCOPY to process ADABAS databases, the ADABAS version-independent module, ADAUSER, must be link edited as SELCOPAD in the CBL.SZZSLOAD library.

The DBID of the database accessed by SELCOPY is controlled by the ADALINK module. Refer to ADABAS documentation for details.

Edit and update sample job ZZIADABL in CBL.SZZSSAM1 as described in the job comment data, then submit it to link edit the ADAUSER module as SELCOPAD. The job should complete with RC=0.

SELCOPY IMS/DL1 Interface

SELCOPY may be used to READ, INSERT, UPDATE and DELETE data in IMS/DL1 databases.

For z/OS systems, the IMS/DL1 interface modules ASMTDLI and PLITDLI are used by SELCOPY to perform IMS/DL1 functions. Therefore, no additional configuration is required.

SELCOPY SLC Message File

The SELCOPY product includes the executable module, SLC, which is an alternative version of the SELCOPY product that has been ported to z/OS and CMS from UNIX platforms.

The SLC version of the software contains some additional features and functionality that z/OS mainframe users may find useful.

SLC requires that a plain text, sequential data set containing SLC messages (SELMSG) be available to the program at run time. The message text contains variable length records and is supplied as member ZZIMSG of the CBL.SZZSSAM2 library.

Execute sample job ZZISMSG in CBL.SZZSSAM1 to allocate your SELMSG data set and then execute SELCOPY to copy the ZZIMSG member to SELMSG.

The DSN of your SELMSG data set must be the same as your SELCNAM data set except that the last three characters must be replaced with "MSG". e.g.

```
SELCNAM DSN:   OEM.CBL.SELCOPY.SSNAM
SELCMSG DSN:  OEM.CBL.SELCOPY.SSMSG
```

Before submitting ZZISMSG, edit and update it as described in the job comment data. The job should complete with RC=0.

Authorised SELCOPY (AC=1)

In some circumstances, where SELCOPY routines have been written to perform operations that require the program to be authorised (e.g. reading an ICF catalog as a data set), SELCOPY must be Link Edited with AC(1) and exist in an authorised library.

If this is required, execute sample job ZZUUMODA in CBL.SZZSSAM1 to apply USERMOD RX00003. This USERMOD performs a link edit to generate a new module ZZSSELCA (an authorised copy of the ZZSELCA program) with the chosen ALIAS name (e.g. SELCOPYA). Using this job will ensure that any service applied to SELCOPY will also be applied to SELCOPYA.

See section "[APF-Authorisation](#)" for details on authorising the SELCOPY Product Suite target load library (SZZSLOAD).

Before submitting ZZUUMODA, edit and update it as described in the job comment data. The job should complete with RC=0.

Customising SELCOPY/i

This chapter describes how to customise the SELCOPY/i component of the SELCOPY Product Suite. This should be done following install of the SELCOPY Product Suite package.

SELCOPY/i may be started in any of the following environments:

- In TSO under ISPF via the "Si" panel menu option which executes the SELCOPY/i invocation REXX exec, SELCOPYI. (By default, SELCOPY/i 3270 terminal management will be performed via ISPF.)
- In TSO without ISPF by executing the SELCOPYI REXX exec at the TSO command prompt. (SELCOPY/i will perform its own 3270 terminal management.)
- As a VTAM application by starting the ZZSPVTAM cataloged procedure and giving users access to logon to the the designated SELCOPY/i VTAM applid.

Configuration tasks must be actioned as appropriate for each environment.

Notes:

1. User access to SELCOPY/i in a TSO environment (natively or under ISPF) or via VTAM may be restricted using RACF or other security management software. (See "[Security Considerations](#)").
2. If the SELCOPY/i System INI file is not found on startup, then open errors and RACF ICH408I messages are returned before display of the SELCOPY/i main window. This is expected the very first time SELCOPY/i is started in any environment. See [System INI File Configuration](#) later in this chapter for details on how to proceed in allocating a System INI file.

Sub-sections:

1. [SELCOPY or CBLVCAT Licence Key Pre-requisite](#)
2. [Enable Execution in TSO \(no ISPF\)](#)
3. [Enable Execution in ISPF](#)
4. [Enable Execution from VTAM USS](#)
5. [System INI File Configuration](#)
6. [User INI File Configuration](#)
7. [Security Considerations](#)
8. [Health Check](#)

SELCOPY or CBLVCAT Licence Key Pre-requisite

All components of SELCOPY Product Suite require that your SELCOPY and/or CBLVCAT licence keys be correctly applied before it can be started successfully. See topics "[Applying the SELCOPY Licence Keys](#)" and "[Applying the CBLVCAT Licence Keys](#)".

If this is not the case, then the following popup message will be returned on attempting to start SELCOPY/i:

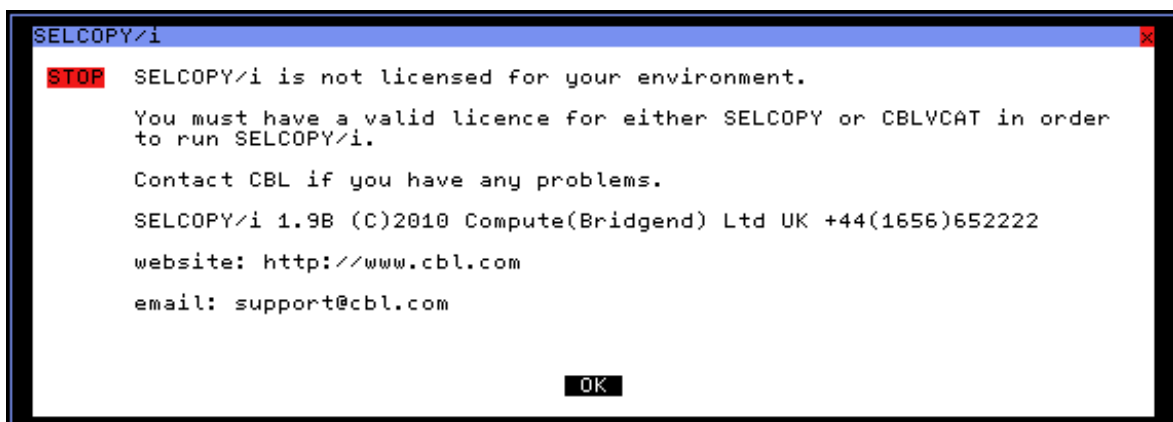


Figure 1. Unlicensed SELCOPY/i window.

Enable Execution in TSO (no ISPF)

See "[Accessing the SELCOPY Product Suite](#)" for steps required in making SELCOPY/i product libraries available to users in a TSO environment.

See "[Security Considerations](#)" for information on restricting user access to SELCOPY/i when running in TSO (natively or under ISPF).

SELCOPY/i is started natively in TSO simply by executing the SELCOPYI exec.

Because SELCOPY/i is operating outside of an ISPF environment, then the user is automatically presented with the following SELCOPY/i warning popup message:



Figure 2. ISPF Unavailability Warning window.

Simply select OK to continue the SELCOPY/i session as normal but without the included ISPF dependent features. (e.g. IEX, OP and OQ.)

Enable Execution in ISPF

See "[Accessing the SELCOPY Product Suite](#)" for steps required in making SELCOPY/i product libraries available to users in a TSO environment running under ISPF. Specifically, these are EXEC, LOAD, ISPLIB and ISPTLIB libraries.

See "[Security Considerations](#)" for information on restricting user access to SELCOPY/i when running in TSO (natively or under ISPF).

Add SELCOPY/i to the ISPF Primary Option Menu

To add SELCOPY/i to your ISPF Primary Option Menu panel, edit member ISR@PRIM in your ISPLIB library concatenation and insert the additional lines highlighted below.

```

.
)BODY  CMD (ZCMD)
.
.
9  IBM Products  IBM program development products
10 SCLM          SW Configuration Library Manager
11 Workplace    ISPF Object/Action Workplace
SI SELCOPY/i    SELCOPY/i for z/OS
M  More         Additional IBM Products
.
)PROC
.
.
&ZSEL = TRANS (TRUNC (&ZCMD, '.'))
.
.
.
9, 'PANEL (ISRDIIS) ADDPOP '
10, 'PGM (ISRSCLM) SCRNAME (SCLM) NOCHECK '
11, 'PGM (ISRUDA) PARM (ISRWORK) SCRNAME (WORK) '
SI, 'CMD (SELCOPYI) ' /* SELCOPY/i */
M, 'PANEL (IBMPRODS) '
.
.

```

Information regarding configuration of the ISPF Primary Option Menu panel may be found in IBM publication "[z/OS ISPF Planning and Customizing](#)".

Define SELCOPY/i in an ISPF Command Table

Defining an ISPF command to invoke SELCOPY/i provides users with an abbreviated method of starting SELCOPY/i from any ISPF panel as an alternative to entering TSO SELCOPYI. The recommended ISPF command name is 'SI'.

You can define an ISPF command by including it in one of the available ISPF command tables:

- Application command table
- User command table
- Site command table
- System command table

This may be achieved by updating a command table that is not in currently use via the ISPF Command Table Utility (ISPF option 3.9).

```
Verb:          SI
Truncation:    0
Action:        SELECT CMD(%SELCOPYI)
Description:   SELCOPY/i
```

Information about the ISPF Command Table Utility may be found in IBM publication "*z/OS ISPF User's Guide Volume II*".

Enable Execution from VTAM USS

The following actions are required in order to successfully start SELCOPY/i as a VTAM application:

1. Define VTAM SELCOPY/i APPL definition statements.
2. Add the SELCOPY/i cataloged procedure to a JES PROCLIB.

Define VTAM SELCOPY/i APPL Definition Statements

Sample member ZZSPAPPL in CBL.SZSSAM1 contains VTAM application definition statements for SELCOPY/i. e.g.

```
ZZSPAPPL  VBUILD TYPE=APPL
SELCOPYI  APPL  EAS=005,ACBNAME=SELCOPYI,AUTH=(ACQ,BLOCK,PASS)
```

These definitions must be included in a member within a VTAM definitions library, referenced via the VTAMLST DDNAME in the VTAM initialisation procedure. This may be done via one of the following methods:

- Copy ZZSPAPPL to a new member in a VTAM definitions library (e.g. SYS1.VTAMLST), then add the new member's name to the VTAM start options configuration file, ATCCONxx, so that VTAM activates the SELCOPY/i APPL definition at initialisation.
- Copy VTAM application definition statements from ZZSPAPPL to an existing member in a VTAM definitions library that contains the major node definitions.
The existing member already has the VBUILD TYPE=APPL statement, so do not copy this statement from ZZSPAPPL.

To activate the SELCOPY/i APPL definition without restarting VTAM, execute the MVS system system command, VARY NET,ACT against the member containing the new application definitions. e.g.

```
VARY  NET,ACT,ID=ZZSPAPPL
```

Add the SELCOPY/i Cataloged Procedure to a JES PROCLIB

Member ZZSPVTAM in CBL.SZSSAM1 is a sample SELCOPY/i VTAM startup procedure.

Edit and update ZZSPVTAM as described in the job comment data, then copy it to a library in your JES PROCLIB concatenation. Note that ZZSPVTAM is a cataloged procedure and should not contain a JOB card.

The job name of this started task will be passed as part of the resource name to the SAF interface by your security software (e.g. RACF). It will also be used to determine the assigned user and group id. As such, you should ensure that the appropriate security resource is configured to allow execution of ZZSPVTAM.

See "[Security Considerations](#)" for information on restricting user access to SELCOPY/i when running as a VTAM application.

Starting the SELCOPY/i VTAM Application

Start SELCOPY/i

From the operator console, execute the MVS system command START to start the system task ZZSPVTAM:

```
START ZZSPVTAM
```

Provided that the security manager allows execution and the SELCOPY/i VTAM APPL has been defined, the following message should appear on the operator log:

```
IEF403I ZZSPVTAM - STARTED - TIME=09.41.27
ZZS0024I VTAM SELCOPY/i VTAM session manager started 2010/12/01 09:41:27.
ZZS0025I VTAM SELCOPY/i build level is 201011151413.03246
ZZS0026I VTAM CBLDLL build level is 201011301850.18053
ZZS9002I Dump task ready.
ZZS9001I Dump task initialised authorised.
ZZS9002I Dump task ready.
ZZSV002I Applid SELCOPYI is accepting logons
```

User Logon to SELCOPY/i

If authorised to do so (see "[Security Considerations](#)"), a user may logon to SELCOPY/i VTAM by opening a VTAM USS terminal and executing the following applid logon command:

```
LOGON APPLID(SELCOPYI)
```

The SELCOPY/i main window is displayed with a pop-up window requesting a RACF userid login and password.

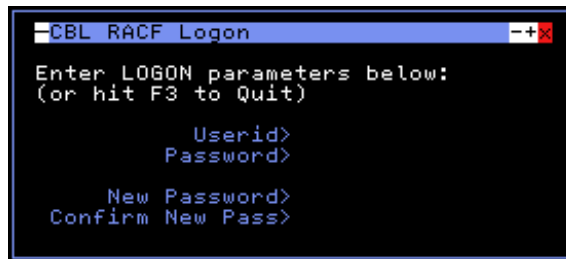


Figure 3. SELCOPY/i RACF Logon window.

Stopping the SELCOPY/i VTAM Application

Before stopping the SELCOPY/i VTAM controller, establish that all users have logged off using the following MVS system command:

```
MODIFY ZZSPVTAM,QUERY USERS
```

This will return a report of active sessions in the following format:

```
ZZSV021I Applid SELCOPYI has 2 active sessions
ZZSV021I User      Terminal Session
ZZSV021I NBJ      SCOTCP27 1A000008
ZZSV021I JGE      SCOTCP28 0200000D
```

Messages may be sent to all, or specified users, using the following operator commands:

```
MODIFY ZZSPVTAM,MSG NBJ USER NBJ, PLEASE LOG OFF NOW.
MODIFY ZZSPVTAM,MSG * ALL USERS MUST LOG OFF.
```

Stop the SELCOPY/i VTAM controller using either of the following MVS system commands:

```
MODIFY ZZSPVTAM,STOP
STOP ZZSPVTAM
```

Enable SELCOPY/i DB2

SELCOPY/i includes features that allow those users assigned appropriate privileges, to Edit and Browse DB2 results tables, list DB2 objects, execute dynamic SQL statements, etc.

The following actions are required before SELCOPY/i users can utilise DB2 features:

1. Ensure DB2 run-time load libraries are accessible by SELCOPY/i.
2. BIND the SELCOPY/i DB2 plan to each DB2 subsystem to be accessed via SELCOPY/i.
3. Grant public SELECT access to the catalog tables of each DB2 subsystem to be accessed via SELCOPY/i.

DB2 Run-time Libraries

SELCOPY/i will attempt to load modules found in DB2 load libraries (e.g. Call Attachment Facility modules for execution of dynamic SQL). Therefore, the required DB2 sub-system run-time libraries must be made available to SELCOPY/i via one of the following:

- The standard library search chain (ISPLLIB, LINKLIST).
- The [SELCOPY/i invocation REXX procedure](#) (SELCOPYI).

The SELCOPYI procedure includes a customisable assignment for variable `sdsnlib` which specifies load libraries to be temporarily added to the ISPLLIB concatenation for execution of the SELCOPY/i application only.

Library names assigned to variable `sdsnlib` may include COBOL, PL1 or IMS/DB load libraries that are used by SELCOPY/i, but in particular, the DB2 load libraries applicable to the sub-systems on which SELCOPY/i will operate. e.g.

```
sdsnlib="'DSN910.DB9G.SDSNEXIT' 'DSN910.SDSNLOAD'" /* DB2 LOAD Libraries. */
```

BIND the SELCOPY/i DB2 Plan

In order to use SELCOPY/i DB2 features, a BIND of the SELCOPY/i DB2 package and application plan must be performed for each DB2 subsystem that is to be made accessible to SELCOPY/i. In addition to this, users must be granted EXECUTE privilege for the application plan in each of the DB2 subsystems.

DBRM modules used in the BIND are supplied in the CBL.SZSDBRM library which must be allocated to DBRMLIB when the BIND is performed. If a remote DB2 subsystem, in a different LPAR or physical machine, is to be accessed via SELCOPY/i and the DB2 systems have been configured to support remote access (DB2 DDF), then the SZSDBRM library must be copied to each remote system to perform a successful BIND.

Edit and update sample job ZZSDB2B in CBL.SZSSAM1, as described in the job comment text, then submit it to BIND default package CBLPACK1 and plan CBLPLAN1 to the specified DB2 subsystem and then grant EXECUTE privilege for the plan to PUBLIC.

If multiple versions of SELCOPY/i with DB2 support are to co-exist in the same environment, then different versions of the DBRM package modules (SZSDBRM library) will need to be bound to each DB2 subsystem. The package name and plan name used to BIND each release of SELCOPY/i's DBRM modules must be unique in that DB2 subsystem. i.e. each copy of the ZZSDB2B sample job, relevant to the SELCOPY/i release, should be updated with a unique package and plan name.

The designated SELCOPY/i DB2 application plan name must be nominated in the SELCOPY/i System INI file by option DB2.PLAN1. This is performed during execution of the FIRSTUSE SITE customisation utility, see "[System INI File Configuration](#)." If multiple instances of SELCOPY/i exist, then the plan name will be different in each instance's copy of the SELCOPY/i System INI file.

Grant access to DB2 catalogs

SELCOPY/i DB2 features use static SQL issued against the DB2 catalog tables. In order to do this successfully, SELECT access to the DB2 catalog tables must be granted to all SELCOPY/i users.

To do this, edit and update sample job ZZSDB2G in CBL.SZSSAM1, as described in the job comment text, then submit it to execute the GRANT statements for the designated DB2 subsystem.

By default, this job grants SELECT access to catalog tables to PUBLIC AT ALL LOCATIONS. If granting access to all users (i.e. PUBLIC) is not acceptable, then the GRANT statements should be updated to list individual userids as appropriate.

Notes:

1. Job ZZSDB2G must be executed for each DB2 subsystem to be accessed via SELCOPY/i by first tailoring the DSN SYSTEM statement.
2. Only DB2 subsystems that share the same SDSNLOAD library may be accessed concurrently within the same SELCOPY/i session.
3. See "[Security Considerations](#)" for information on restricting user access to SELCOPY/i DB2 features using SAF rules.

SELCOPY/i VTAM Application DB2 Connection

In a SELCOPY/i VTAM environment, the SQLID used for a DB2 connection will, by default, be the userid of the CBLIVTAM job owner as opposed to the userid of the logged in user. This may result in SQL AUTH errors or access which is inappropriate to the logged in user.

Ensuring an SQLID equal to the userid of the logged in user is employed for DB2 connection requires an update to the DB2 connection authorisation exit, DSN3@ATH.

The required source code updates to this exit is provided in the sample job member ZZS3SATH in CBL.SZZSSAM1. The source for this member was adapted from the IBM DB2 V9R1 sample library member, DSN910.SDSNSAMP(DSN3SATH). Note that, no lines have been changed or deleted, and lines which have been added have the character string "IQ002629" in column 64.

Modifications implemented in ZZS3SATH change identification of the primary authorisation id for DB2 connection in a batch address space, from the JOB owner userid to that associated with the current task. Furthermore, this change only occurs if the following conditions are true:

1. DB2 connection occurs in a batch address space.
2. The parent task of the current task has a request block program name of "CBLAVTAM". (i.e. the SELCOPY/i VTAM program.)

Before implementing updates in ZZS3SATH with your installations existing DSN3@ATH module source, the DB2 administrator should first verify whether this exit has already been modified for operational DB2 subsystems. If so, the lines inserted into ZZS3SATH for SELCOPY/i VTAM should be carefully merged into the existing, tailored source.

Your installation's existing DB2 exit management standards should be used to assemble and link edit the updated exit source as DSN3@ATH (required by DB2) into the appropriate DB2 subsystems' user exit libraries. e.g. via an SMP/E USERMOD.

Note:

The updated DSN3@ATH exit must be available to the DB2 master address space and the DB2 subsystem must be restarted in order for it to take effect.

System INI File Configuration

On startup of SELCOPY/i in any of the supported environments (TSO, ISPF or VTAM), an initialisation data set is processed which contains SELCOPY/i environment options for your installation. This is a sequential data set and is referred to as the SELCOPY/i system INI file.

Existence of the SELCOPY/i system INI file is mandatory, its DSN being determined by the CBLNAME option INamDSN. See Appendix A, "[The CBLNAME Options Module](#)" for information on updating the CBLNAME module.

On startup of SELCOPY/i following install of a new release, the FIRSTUSE procedure will automatically be invoked to configure standard installation-wide options in a new or existing SELCOPY/i system INI file. See "[FIRSTUSE Utility](#)" in Appendix C for details.

Once generated using FIRSTUSE, options in the SELCOPY/i system INI file may be manually added or updated simply by editing it. This should be done carefully and by authorised users only. Therefore, to avoid update by unauthorised personnel, the SELCOPY/i system INI file should be write protected using security manager software (e.g. RACF) with READ authority assigned to UACC.

Important options that should be specified correctly in the SELCOPY/i system INI file include the following:

System.CmdText	Help.DefaultPath
System.ISPFSDSF	DB2.Plan (SELCOPY Debug DB2 access)
System.SiteDSNPrefix	DB2.Plan1 (SELCOPY/i DB2 access)
System.SysIRel	Tables.DistTables
System.UserINIFile	Tables.SiteTables
Edit.DistMacros	IPO.PanelPath
Edit.MacroPath	IPO.ProcPath
Edit.SiteMacros	SDE.COBOlCompiler (If COBOL compiler not in search chain)
CBLVCAT.ESR (For CBLVCAT licences only)	SDE.PL1Compiler (If PL1 compiler not in search chain)
CBLVCAT.SVC (For CBLVCAT licences only)	

See Appendix C, "INI Options Files (SELCOPY/i)" for details on the format of SELCOPY/i INI files and information on supported options.

Existing SELCOPY/i System INI File

Where a previous version of SELCOPY/i is already installed, a SELCOPY/i system INI file will already be in use. In this case, one of the following actions should be taken:

- If the SELCOPY Product Suite package has been installed in separate SMP/E zones and libraries to the previous installed version of the software then, in order to maintain multiple releases:
 1. Copy the existing SELCOPY/i system INI file to a different data set name.
 2. Configure *INamDSN* in the CBLNAME options module to point to this DSN, then assemble CBLNAME for the new release.
 3. Start SELCOPY/i. The release upgrade will be detected, automatically invoking the procedure (FIRSTUSE SITE) to configure the SELCOPY/i system INI data set with any newly available options and, most importantly, update values for existing options that reference install library DSNs.
- If the SELCOPY Product Suite package has been installed into existing SMP/E zones and libraries, so replacing a previous version, then the existing SELCOPY/i system INI file may be configured with new and updated options. i.e.
 1. Configure *INamDSN* in the CBLNAME options module to point to the existing SELCOPY/i system INI file DSN and assemble CBLNAME for the new release.
 2. Start SELCOPY/i. The release upgrade will be detected, automatically invoking the procedure (FIRSTUSE SITE) to configure the existing SELCOPY/i system INI file.

In both cases, executing FIRSTUSE SITE will prompt you to supply the DSN prefix used for the SMP/E target and distribution libraries. This value is then used to identify the CBL supplied edit macro library and to populate prompt fields with recommended DSN option values.

New SELCOPY/i System INI File

If this is the first install of the SELCOPY/i component, then the SELCOPY/i system INI file does not yet exist and must be created by the installer as follows:

1. Configure *INamDSN* in the CBLNAME options module to point to an as yet unallocated DSN to be used for your SELCOPY/i system INI data set, then assemble CBLNAME for the new release.
2. Start SELCOPY/i in any of the supported environments. Since the SELCOPY/i system INI file does not yet exist, the following messages are returned by the software:

```
ZZS0027I Dump dataset name prefix not found in the INI file.
          Default set to user.ZZSDUMP.
```

```
To change this use Settings->System (=0.2).
```

Select "OK" to continue.

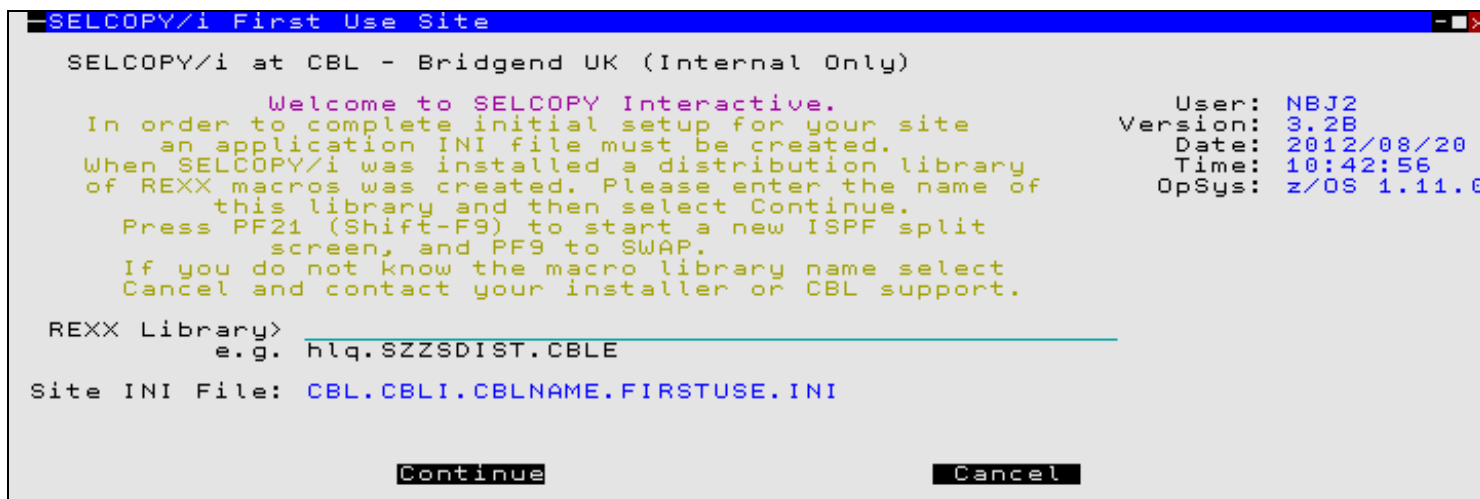


Figure 4. First Use Site Panel.

Enter the DSN of the newly installed SELCOPY/i CBL macro library (SZZSDIST.CBLE) and select "Continue".

3. Follow the prompts to configure global options and allocate the following:
 - ◆ The SELCOPY/i system INI file. (DSN defined by *INamDSN* in CBLNAME.)

- ◆ A SELCOPY/i edit macro library for your installation. (This library will be made available to all users via an edit MACROPATH definition and is intended to contain edit macros developed at your installation.)

See "**FIRSTUSE Utility**" for details.

- When the FIRSTUSE procedure is complete, use PF3 to exit the text editor main window (the SELCOPY/i logo screen is displayed). Press PF3 again to exit SELCOPY/i, then re-start (or logon to) SELCOPY/i. If the SELCOPY/i system INI file has been properly configured, FIRSTUSE will automatically run again, this time to (silently) generate your personal SELCOPY/i user INI file. A "What's New" popup will be displayed for a any user upgrading from an earlier version of SELCOPY/i. PF3 will return to the Primary Options Menu.
- Use PF3 to completely exit, then restart SELCOPY/i once more. Startup should be smooth, the Primary Option menu being displayed. No error/informational messages are expected.

Security Considerations

SELCOPY/i Resource Access

SELCOPY/i is a function rich tool that supports features which, at some installations, may be considered too powerful for use by general users. e.g. The ability to list details of the operating system (CPUID, etc.)

The following options in the SELCOPY/i system INI file enable security administrators to control access to SELCOPY/i and its facilities, restricting their use to authorised users only.

```
(RACF)
ResourceCheck=YES          * Activate resource access checking.
SuppressWTO=NO            * Suppress access failure messages at the Operator Console.
ResourceClass=FACILITY    * The general resource class name.
UserTSO=SELCOPYI.TSO      * Resource name for SELCOPY/i startup in TSO/ISPF.
UserVTAM=SELCOPYI.VTAM    * Resource name for SELCOPY/i user logon in VTAM.
System=SELCOPYI.SYSTEM    * Resource name for System list windows.
DB2=SELCOPYI.DB2         * Resource name for SELCOPY/i DB2 features.
SELCOPY=SELCOPYI.SELCOPY  * Resource name for the SELCOPY Debugger.
CBLVCAT=SELCOPYI.CBLVCAT * Resource name for CBLVCAT Interactive.
```

Before any of these RACF (or equivalent security management software) resource names may be referenced, they must be defined to the resource class specified on the *ResourceClass* option. e.g.

```
RDEFINE FACILITY SELCOPYI.TSO UACC(NONE)
RDEFINE FACILITY SELCOPYI.VTAM UACC(NONE)
RDEFINE FACILITY SELCOPYI.SYSTEM UACC(NONE)
RDEFINE FACILITY SELCOPYI.DB2 UACC(NONE)
RDEFINE FACILITY SELCOPYI.SELCOPY UACC(NONE)
RDEFINE FACILITY SELCOPYI.CBLVCAT UACC(NONE)
```

If the class specified by *ResourceClass* is RACLISTed, then, to have these changes take effect, the security administrator must issue the following command:

```
SETROPTS CLASSACT(FACILITY) RACLIST(FACILITY) REFRESH
```

To allow individual users and groups to access these facilities, then they should be permitted at least READ access to the resource name. e.g.

```
PERMIT SELCOPYI.SYSTEM CLASS(FACILITY) ID(SYS) ACCESS(READ)
PERMIT SELCOPYI.** CLASS(FACILITY) ID(ADMIN) ACCESS(READ)
```

Please see the distributed CMX file &CBL.SZZSDIST.CMX(ZZSRACF) for samples of commands useful in administering SELCOPY/i RACF resource restrictions.

DATASET Write Protection

Following successful installation and customisation of SELCOPY/i, it is recommended that security management software (e.g. RACF) be used to restrict access to important configuration data sets and libraries. General user access should be set as READ only. This will ensure strict control over update of these data sets and avoid any accidental update.

Data sets for which general users should be assigned READ only access:

- The CBLNAME options source member.
- The SELCNAM SELCOPY options data set.
- The SELCOPY/i system INI data set.
- The CBL.SELCOPY.SITE.CBLE common SELCOPY/i edit macros library.
- All SELCOPY Product Suite Target and Distribution Libraries.

E.g. RACF commands to restrict alter access for the SELCOPY/i system INI file to members of the group, SYS:

```
ADDSD      'CBL.SELCOPYI.SYSTEM.INI'          UACC (READ)
SETROPTS   GENERIC (DATASET)      REFRESH
PERMIT     'CBL.SELCOPYI.SYSTEM.INI'  ID (SYS)  ACCESS (ALTER)
```

Health Check

The final stage of the SELCOPY/i customisation process is to contact CBL to organise a product "**Health Check**".

The health check will be performed via a **WebEx** conference, whereby the installer can share their TSO logon screen, allowing a CBL technician to verify smooth startup and correct operation of some basic SELCOPY/i functionality. This process typically takes around 15-30 minutes.

Please email support@cbl.com or call **+44 (1656) 65 2222** to arrange your health check.

Customising CBLVCAT

This chapter describes how to customise the CBLVCAT tuning and reporting tool of the SELCOPY Product Suite. This should be done following install of the SELCOPY Product Suite package.

Sub-sections:

1. [Applying the CBLVCAT Licence Keys](#)
2. [Configure CBLVCAT Default Options](#)
3. [Install the VCI SVC for Interactive Execution](#)

Applying the CBLVCAT Licence Keys

CBLVCAT requires licence information consisting of your installation company name and location (SITE), at least one operational date range (RANGE) and a password key (PASS).

Note that the password key is not dependent on CPU id or CBLVCAT release. i.e. the same licence details may be used for different releases of CBLVCAT and on any CPU.

The SITE, RANGE and PASS details are supplied to your installation by CBL under separate cover and should be entered, exactly as supplied, as the values of the *Site*, *VDateRange* and *VPassword* options in the CBLNAME source member. e.g.

```
CBLNAME ,                               +
  Site='John Smith Ltd - London, UK',     +
  VDateRange=(1980/07/20-2010/07/19),    +
  VPassword='0123,4567,89AB,CDEF',       +
  ...other options...                     +
DUMMY=          Dummy terminating parameter.
END
```

The Site string, in particular, is case sensitive and must be entered as supplied by CBL.

Note that the characters ampersand (&) and apostrophe/single quote (') have special meaning to High Level Assembler. Where these characters occur in data strings, they must be repeated (i.e. & becomes && and ' becomes '''). Where apostrophe/single quote is a string delimiter, it should not be repeated. e.g.

```
Site='James && Sons - Peterboro'' UK',    +
```

See Appendix A, "[The CBLNAME Options Module](#)" for details on customising and updating CBLNAME.

To avoid update by unauthorised personnel, the CBLNAME options module source should be write protected using security manager software (e.g. RACF).

Configure CBLVCAT Default Options

In addition to the mandatory *Site*, *VDateRange* and *VPassword* options in CBLNAME, other CBLVCAT environment defaults may be defined for your installation.

The following table details these additional CBLNAME options which are discussed in more detail under Appendix A, "[The CBLNAME Options Module](#)."

Note that some options are applicable to both SELCOPY and CBLVCAT products. Unless otherwise stated, the listed options apply to CBLVCAT only. Similarly, the operating system to which an individual option applies is indicated by z/OS, CMS, VSE or All (All systems).

CBLNAME Option	Operating System	Description
Site	All	CBL Supplied Company name and location. (SELCOPY & CBLVCAT)
VPassword	All	CBL Supplied SELCOPY Password.
VDateRange	All	CBL Supplied SELCOPY Date Range.
PageDepth	All	SYSPRINT/SYSLST Pagedepth Value. (SELCOPY & CBLVCAT)
PageWidth	All	SYSPRINT/SYSLST Pagewidth Value. (SELCOPY & CBLVCAT)
Separator	All	Control Statement Command Separator Character. (SELCOPY & CBLVCAT)
VLineSpace	All	SYSPRINT/SYSLST report output line spacing.
VMinRC	All	Sets the minimum return code to be returned from CBLVCAT. Lower return code values will be suppressed.
VAssoc	All	Catalog Report Option: Display/Suppress associated VSAM objects.
VFlagImbed	All	Catalog Report Option: Display/Suppress --IMB-- flag for INDEX IMBED attribute.
VFlagRepli	All	Catalog Report Option: Display/Suppress --REP-- flag for INDEX REPLICATE attribute.
VVolInfo	All	Catalog Report Option: Display/Suppress volume information.
VIndex	All	Catalog Report Option: Determines whether or not KSDS/AIX Index components are reported.
VAvrOrLmax	All	Catalog Report Option: Display either the IDCAMS defined average or maximum record length.
VMaxExtents	All	Catalog Report Option: Specifies the maximum number of extents that will be displayed for each entry.
VDefine	All	Catalog Report Option: Determines whether or not IDCAMS DEFINE output is automatically generated for entries in the report.
VGDGRepeat	All	Catalog Report Option: Determines whether or not the GDG name is repeated on all consecutive lines of a customised report that contain information for the GDG.
VGDGDataset	All	Catalog Report Option: Determines whether or not the absolute generation number is appended to the display of the GDG data set.
VUseCatDSN	All	Catalog Report Option: Determines whether the catalog DSN or DDNAME is displayed as the heading for the DSN column.
VCatFileName	All	Catalog Report: Default Catalog DDNAME/DLBL.
VOvlay	All	Catalog/VTOC Report Option: Determines whether long file names overwrite subsequent data or force new print line.
VTZAdjust	All	Catalog/VTOC Report Option: Determines whether or not Time Zone adjustments are required on all reported dates.
V2digitYear	All	Catalog/VTOC Report Option: Determines whether or not dates are displayed with 2 or 4 digit years.
VDefCatName	All	IDCAMS Job Option: Determines whether or not the CATALOG operand is included in generated IDCAMS DEFINE statements.
VReorg	All	IDCAMS Job Option: Determines whether or not a file re-organisation job deck is generated for parameter DEFINE. Job includes execution of SELCOPY and IDCAMS.
VReorgDisk	All	IDCAMS Job Option: Determines whether a disk or tape file is used for backup in the SELCOPY job step of a file re-organisation job deck.
VDefPath	All	IDCAMS Job Option: Determines whether or not DEFINE PATH job steps are generated for files with associated PATH components.
VDefBldIndex	All	IDCAMS Job Option: Determines whether or not IDCAMS BLDINDEX operations are included as part of any DEFINE AIX generated job steps.
VDefComments	All	IDCAMS Job Option: Determines whether or not original DEFINE parameter definitions are included as comments in an IDCAMS DEFINE job specifying tuned values.

VDefNotes	All	IDCAMS Job Option: Determines whether or not tuning information in the catalog report are included in the generated IDCAMS DEFINE job.
VDefCluster	All	IDCAMS Job Option: Determines whether or not VSAM CLUSTERS are included in the generated IDCAMS DEFINE job.
VDefAix	All	IDCAMS Job Option: Determines whether or not VSAM AIXs are included in the generated IDCAMS DEFINE job.
VDelComment	All	IDCAMS Job Option: Determines whether or not generated IDCAMS DELETE statements are commented.
VDefJCL	All	IDCAMS Job Option: Determines whether or not generated Job Control is included.
VDelCatName	All	IDCAMS Job Option: Determines whether or not the CATALOG operand is included in generated IDCAMS DELETE statements.
VCardInput	All	Release Dependency: Determines whether or not to accept control statement input via SYSIN/SYSIPT.
VOpsMsg	All	Release Dependency: Determines whether or not error messages are output to the operator console.
VFilePercent	All	Severity Message 1-09: Percentage threshold at which a file is considered full.
VSecAlloc	All	Severity Message 2-19: Warning threshold for number of Secondary Allocations.
VCASplits	All	Severity Message 3-06: Percentage threshold of CA SPLITS. (KSDS/AIX only)
VSecAllocErr	All	Severity Message 3-19: Error threshold for number of Secondary Allocations.
VCISplits	All	Severity Message n-08: Percentage threshold of CI SPLITS.
VPCOrUnused	All	Standard Catalog Report: Display either the percentage of allocated space used or the number of unused tracks/blocks.
VTSorDefined	All	Standard Catalog Report: Display either the last accessed timestamp or the definition date.
VExcpOrCICA	All	Standard Catalog Report: Display either the number or EXCPs or number of Control Intervals per Control Area (CI/CA).
VOnline	All	Tuning Option: Determines whether or not fileids containing the qualifier "ONLINE" are automatically considered to be on-line files.
VCICS	All	Tuning Option: Determines whether or not fileids containing the qualifier "CICS" are automatically considered to be on-line files.
VIMS	All	Tuning Option: Determines whether or not fileids containing the qualifier "IMS" are automatically considered to be on-line files.
VDLI	All	Tuning Option: Determines whether or not fileids containing the qualifier "DLI" are automatically considered to be on-line files.
VDL1	All	Tuning Option: Determines whether or not fileids containing the qualifier "DL1" are automatically considered to be on-line files.
VString	All	Tuning Option: Determines whether or not fileids containing the qualifier specified by the <i>VStr</i> option are automatically considered to be on-line files.
VOSTr	All	Tuning Option: Specifies a fileid qualifier to be used when automatically detecting files as being on-line. (Requires <i>VString=YES</i>)
VMaxOnlineCI	All	Tuning Option: Specifies the maximum acceptable CISIZE that may be recommended when tuning on-line files.
VTunePrtSev	All	Tuning Report Option: Determines whether or not the SEV n-nn messages are displayed.
VTunePrtCap	All	Tuning Report Option: Determines whether or not the File Capacities report block is displayed.
VTunePrtJCL	All	Tuning Report Option: Determines whether or not the JCL Override report block is displayed.
VFreeTab	All	VTOC Report Option: (If <i>VFreeSpace=Yes</i>) Display free space in-line or in a table following the main report.
VFreeSpace	All	VTOC Report Option: Display/Suppress free space information.
VExpd	All	VTOC Report Option: Display either the expiry date or * EXPD * for expired files or files defined without an expiry date.
VPerm	All	VTOC Report Option: Display either the implied expiry date (1999/12/31) or PERMANENT for permanent files.
VSortOrder	All	VTOC Report Option: Specifies the default field by which report entries are sorted.
VVTOCPercent	All	VTOC Report Option: Specifies the percentage of tracks used threshold above which values are flagged in the Total Free Tracks display of the FREE space table.
VVolSer	All	VTOC Report: Display/Suppress volume serial numbers.
VAlias	MVS	Catalog Report Option: Display/Suppress aliases.

VMountVVDS	MVS	Catalog Report Option: Determines whether or not to prompt the operator to mount off-line VVDS volumes.
VTuneDFP22	MVS	Release Dependency: Determines whether or not tuning recommendations are based on DFP pre-release 2.2.
VNonICF	CMS	Release Dependency: Determines whether or not access to MVS catalogs via CMS is supported. i.e. treated as non-ICF.
VISCatalog	VSE	Catalog Report Option: Determines whether or not the entire catalog is loaded into storage for improved performance.
VVolsPercent	VSE	Catalog Volume Summary: Percentage threshold at which a VSAM space on a volume is considered full.
VJCLBufnd	VSE	Release Dependency: Determines whether or not BUFND values are displayed in the tuning JCL Override block for releases of VSE/SP prior to 4.1.
VForceCancel	VSE	Release Dependency: Determines whether or not to force a VSE CANCEL on a non-zero Return Code for VSE/SP 2.0 and later.
VShrOrSC	VSE	Standard Catalog Report: Display either the Cross System Share Option or the Primary Space Class.

Enable Execution in TSO

See "[Accessing the SELCOPY Product Suite](#)" for steps required in making SELCOPY/i product libraries available to users in a TSO environment.

CBLVCAT reads ICF catalog and VVDS entries to generate catalog reports and perform VSAM data set tuning. In order to do this CBLVCAT must be authorised. See "[APF-Authorisation](#)" for details on making the SELCOPY Product Suite load library APF authorised.

If the CBLVCAT load module (CBLV) is to be executed in a TSO environment, then it must be added to the list of TSO authorised commands and authorised programs in PARMLIB member, IKJTSoxx. e.g.

```

AUTHCMD NAMES (          /* AUTHORIZED COMMANDS  */      +
  CBLV              /* CBLVCAT                */      +
  ...              /*                      */
)
AUTHPGM NAMES (          /* AUTHORIZED PROGRAMS  */      +
  CBLV              /* CBLVCAT                */      +
  ...              /*                      */
)

```

See sample TSO exec procedure, ZZSVTERM (alias VTERM) in CBL.SZZSEXEC which accepts CBLVCAT control syntax input, executes CBLV and writes the output to the TSO terminal.

Install the VCI SVC for Interactive Execution

CBLVCAT may be executed interactively in SELCOPY/i enabling users to open a CBLVCAT report list window and, optionally, an edit view containing a generated IDCAMS DEFINE batch job.

If SELCOPY/i is executed in TSO (natively or in ISPF), then the type 3 CBLVCAT SVC program, ZZV00SVC, must be installed to allow interactive execution of CBLVCAT for catalog reporting.

The SVC number used by ZZV00SVC is determined by the *CBLVCAT.SVC* and *CBLVCAT.ESR* options in the SELCOPY/i system INI file. Following execution of [FIRSTUSE SITE](#) to perform initial customisation of the SELCOPY/i system INI file, these options are set so that ZZV00SVC is assigned Extended SVC Routing (ESR) function code 222 on SVC number 109 (X'6D'). i.e.

```

(CBLVCAT)
  SVC=109
  ESR=222

```

The ZZV00SVC module is installed as follows:

1. Verify the SVC/ESR combination in the SELCOPY/i system INI file is not already in use by another product.
2. Apply USERMOD RX00002 to Link Edit the ZZV00SVC module with alias IGX00nnn, where nnn is the ESR function code specified in the SELCOPY/i system INI file.
3. Add IGX00nnn to the static or dynamic LPA.
4. Include IGX00nnn module in the SVC table.

Verify SVC/ESR Availability

Before customising the CBLVCAT Interactive SVC, you must first establish whether the SVC/ESR combination in the SELCOPY system INI file is not already in use.

To do this, tailor the sample job ZZVSVC01 in CBL.SZZSSAM1 as described in the job comment data, submit the job and review the SYSPRINT output. The job executes the ZZSSVC (alias CBLAVCII) program with parameter CHECK and returns messages which report the following information:

1. ZZSSVC (CBLAVCII) Program level and date, executing userid and operating system release. e.g.

```
VCII000I CBLVCAT Interactive SVC install utility started 2010/04/19 11:24:14.
Program=CBLAVCII Assembled: 2004-05-28 12:54 Level=074
User=ZZVSVC01 Operating system=z/OS 1.9.0
Parms=CHECK
```

2. The DSN of the SELCOPY/i system INI file to be read. e.g.

```
VCII007I Initialisation file CBL.SELCOPYI.SYSTEM.INI is being read.
```

3. The CBLVCAT SVC/ESR options, identified in the SELCOPY/i system INI file, and so the IGX00 nnn SVC module name. e.g.

```
VCII017I Function is: Check CBLVCAT Interactive SVC svc=109 esr=222 module=IGX00222.
```

4. The existence or non-existence of the IGX00 nnn module in the dynamic or static LPA. e.g.

```
VCII019E SVC module IGX00222 not found in either static or dynamic LPA.
VCII003E Check SVC has failed due to error.
or
VCII018I SVC module IGX00222 found in the static LPA.
EP=82BB2578 Address=02BB2578 Length=00000100.
```

5. Whether or not IGX00 nnn in the LPA is the CBLVCAT SVC module. e.g.

```
VCII016E The SVC module IGX00222 is not the CBLVCAT Interactive SVC.
or
VCII021I SVC module IGX00222 is the CBLVCAT interactive SVC:
Id=CBLVSVC Assembled: 2003-08-13 15:20 Level=010
```

6. Whether or not IGX00 nnn exists in the SVC table. e.g.

```
VCII023I SVC module IGX00222 is not installed in the SVC table.
or
VCII023I SVC module IGX00222 is installed in the SVC table.
```

If the the SVC module is found in the LPA (VCII018I) but is not the CBLVCAT Interactive SVC (VCII016E), then edit your SELCOPY/i system INI file, change the value on the CBLVCAT.ESR option and re-submit job ZZVSVC01.

If the the SVC module is not found in the LPA (VCII019E), then proceed with application of SMP/E USERMOD RX00001.

Note that job ZZVSVC01 may submitted at any time to diagnose the status of the CBLVCAT Interactive SVC.

Apply USERMOD to Create SVC Module Alias

The SVC module name that represents your chosen SVC/ESR combination is of the form IGX00 nnn , where nnn is the ESR function code specified in the SELCOPY/i system INI file.

An module of this name must be generated for ZZV00SVC (the CBLVCAT interactive SVC) for subsequent inclusion in the LPA. SMP/E USERMOD RX00002 is used to link edit the ZZV00SVC module to library CBL.SZZSLPA with alias IGX00 nnn

Tailor the sample job ZZVUMODS in CBL.SZZSSAM1 as described in the job comment data (paying particular attention to the SYSIN ALIAS parameter), and submit it to generate the suitable IGX00 nnn alias.

Add SVC Module to the LPA

The CBLVCAT interactive SVC module IGX00nnn must be added to the static or dynamic Link Pack Area (LPA) so that it gets automatically included in the SVC table following IPL.

Do **one** of the following:

- To add IGX00nnn to the static LPA, add library CBL.SZZSLPA to an LPALSTxx parmlib member that is used for IPL. Remove any other SZZSLPA data set that may exist as a result of a previous SELCOPY Product Suite install. Following a subsequent IPL with CLPA, the IGX00nnn module will be added to the SVC table.
- To add IGX00nnn to the dynamic LPA, include the IGX00nnn module in an IEALPAXx parmlib member that is used for IPL. e.g.

```
INCLUDE LIBRARY(CBL.SZZSLPA)
MODULES(IGX00222)
```

Following a subsequent IPL with MLPA or CLPA, the IGX00nnn module will be added to the SVC table.

Note:

Do not do both otherwise duplicate entries for IGX00nnn will exist in the LPA and so its automatic addition to the SVC table will fail.

To avoid having to schedule an IPL, execute the MVS system command, SETPROG, to temporarily add IGX00nnn to the LPA. e.g.

```
SETPROG LPA,ADD,MODNAME=(IGX00222),DSNAME=CBL.SZZSLPA
```

The status of a module in the LPA can be verified using the MVS system command, DISPLAY. e.g.

```
DISPLAY PROG,LPA,MODNAME=IGX00222
```

SETPROG and DISPLAY are documented in *z/OS MVS System Commands*.

Add SVC Module to the SVC Table

Having updated LPALSTxx or IEALPAXx, the IGX00nnn module will automatically be added to the SVC table following the appropriate IPL.

However, to avoid having to schedule an IPL, edit and update sample job ZZVSVC02 in CBL.SZZSSAM1, as described in the job comment data, then submit it to dynamically add IGX00nnn to the SVC table. ZZVSVC02 executes the ZZSSVC (alias CBLAVCII) program with parameter INSTALL. The job should complete with RC=0.

Check the SYSPRINT VCII prefixed output messages from ZZSSVC to verify successful installation.

If SELCOPY/i is already active, then it must be stopped and restarted before updates to the SELCOPY/i system INI file and SVC table can take effect.

Appendix A. CBLNAME Options Module (All Components)

The existence of a correctly configured CBLNAME options module is mandatory for successful operation of all components of the SELCOPY Product Suite. It is dynamically loaded on startup of components SELCOPY, CBLVCAT and SELCOPY/i in order to establish operational licence information, the location of required initialisation files and other environment options.

This chapter describes the options that may be configured in the CBLNAME options module and the method by which it is updated.

The CBLNAME module must be re-generated following install of the SELCOPY Product Suite package.

Sub-sections:

1. **Maintaining CBLNAME**
2. **Mandatory Options**
3. **Options Common to both SELCOPY and CBLVCAT**
4. **SELCOPY Options**
5. **CBLVCAT Options**

Maintaining CBLNAME

The CBLNAME options module is maintained in SMP/E via USERMOD RX00001.

1. Copy the ZZSCBLN member from CBL.SZZSSAM1 to your own Assembler source library. Note that ZZSCBLN contains reference to **all** supported options and their default values.
2. Modify the ZZSCBLN member in your source library. Configure options for **all** products before proceeding to the next step.
3. Edit and update sample job ZZSUMODC in CBL.SZZSSAM1, as described in the job comment data, then submit it to install SMP/E USERMOD RX00001. This USERMOD will assemble and link edit the CBLNAME module into CBL.SZZSLOAD replacing the skeleton version created during the SMP/E APPLY.

Note that, each time this job is executed, the REWORK(yyyyddd) operand must be updated with a later date to allow SMP/E to RECIEVE the updated USERMOD.

Existing CBLNAME Source Member

If previous versions of SELCOPY and/or CBLVCAT are already installed on your system, then a CBLNAME source member will already exist in your Assembler source library. Compare your existing source with the ZZSCBLN sample provided in CBL.SZZSSAM1 to identify any new options that may be applicable to your installation and, if so, include them in your existing CBLNAME source.

To ensure that your current environment options are maintained, use your existing CBLNAME source when applying USERMOD RX00001.

Application of USERMOD RX00001 should be actioned first in a test system so that any errors made when applying licence information will not affect production jobs.

Alternatively, use sample job ZZSCNAME to assemble and link edit CBLNAME without SMP/E. Using this job, you can generate the CBLNAME module in a test load library then run the IVP test jobs using it in a STEPLIB concatenation with your live CBL.SZZSLOAD library. Note that, if testing CBLVCAT, your test load library must also be APF authorised.

Mandatory Options

The following CBLNAME options are mandatory and must be configured before SELCOPY, SELCOPY/i or CBLVCAT can be executed.

Site= 'Your site name - location'

The Site option is required to comply with the CBL License Agreement.

Applicable to all SELCOPY Product Suite components, this option identifies the licensed company's installation name and location which will be included in each page heading of the product's default list output written to SYSLST/SYSPRINT.

This character string must be enclosed in apostrophes/single quotes (') and entered exactly as supplied to you by CBL so that upper/lower case characters are respected. If the character data contains an ampersand (&) and/or an apostrophe/single quote ('), then these character must be repeated to avoid Assembly errors. (i.e. & becomes && and ' becomes "). e.g.

```
Site='James && Sons - Peterboro'' UK'
```

SNamDsn= 'your.selcnam.file'

Required for SELCOPY, this option identifies the cataloged DSN (or VSE filename) of your SELCNAM data set which gets dynamically allocated by SELCOPY if a SELCNAM DDname/DLBL is not already allocated.

Note: If option *SNamDsn* is not customised **and** no SELCNAM DDname/DLBL exists, then SELCOPY will attempt to read a default SELCNAM file with a DSN of SELCOPY.NAM.

In addition to options set in CBLNAME, the SELCNAM data set contains environment options specific to SELCOPY. In particular SELCNAM contains options that specify the product's operational date range and password. See "[SELCNAM Options File \(SELCOPY\)](#)" for details.

The SELCNAM DSN string must be enclosed in apostrophes/single quotes ('), is of maximum length 54 and may contain MVS system symbols. If an MVS system symbol is used then the DSN string will contain an ampersand (&) which must be repeated to avoid Assembly errors. e.g.

```
SNamDSN='&&SYSNAME..CBL.SELCOPY.NAM'
```

SNamVol= volser

Required for SELCOPY in VSE only, this option identifies the volume serial number of the volume on which the SELCNAM data set is defined.

Dynamic allocation of a temporary partition label and dynamic ASSGN both require a volume specification. (Default is SYSWK1)

SPassword= 'XXXX,XXXX,XXXX,XXXX'

Note that it is recommended that SELCOPY password information be supplied via the SELCNAM data set.

Only required for SELCOPY if licence information is not supplied in the SELCNAM data set. This option specifies the SELCOPY password string as supplied to you by CBL.

The password is a 16 character hex string. Blanks and/or commas may be used to make the hex string more readable, but if used the password must be enclosed within apostrophes/single quotes (').

SDateRange=(daterange,...)

Note that it is recommended that SELCOPY date range information be supplied via the SELCNAM data set.

Only required for SELCOPY if licence information is not supplied in the SELCNAM data set. This option specifies a list of one or more SELCOPY operational date range(s) as supplied to you by CBL.

The list must be enclosed in parentheses (') and each date range separated by commas with no embedded blanks. Each date range is of the form yyyy/mm/dd-yyyy/mm/dd identifying an inclusive range of dates within which SELCOPY will execute successfully.

VPASSWORD= 'XXXX,XXXX,XXXX,XXXX'

Required for CBLVCAT, this option specifies the CBLVCAT password string as supplied to you by CBL.

The password is a 16 character hex string. Blanks and/or commas may be used to make the hex string more readable, but if used the password must be enclosed within apostrophes/single quotes (').

VDateRange=(daterange,...)

Required for CBLVCAT, this option specifies a list of one or more CBLVCAT operational date range(s) as supplied to you by CBL.

The list must be enclosed in parentheses (') and each date range separated by commas with no embedded blanks. Each date range is of the form yyyy/mm/dd-yyyy/mm/dd identifying an inclusive range of dates within which CBLVCAT will execute successfully.

INamDsn= 'your.selcopyi.system.ini'

Required for SELCOPY/i, this option identifies the cataloged DSN of your SELCOPY/i system INI file.

The SELCOPY/i system INI file contains environment options specific to SELCOPY/i. See topics "[System & User INI Common Options](#)" and "[System INI Options](#)."

The DSN string must be enclosed in apostrophes/single quotes ('), is of maximum length 54 and may contain MVS system symbols. If an MVS system symbol is used then the DSN string will contain an ampersand (&) which must be repeated to avoid Assembly errors. e.g.

```
INamDSN=' &&SYSNAME..CBL.SELCOPYI.SYSTEM.INI '
```

Options Common to Both SELCOPY and CBLVCAT

The following CBLNAME options are applicable to both SELCOPY and CBLVCAT.

PageDepth=*integer*

Defines an integer value which is the default page depth of the list output written to SYSLST/SYSPRINT.

The maximum value that may be defined by this CBLNAME option is 255. For SELCOPY this value may be overridden with a potentially larger value on an OPTION PAGEDEPTH specification in SELCNAM.

If allowed to default to 0 (zero), 58 is used for MVS and the System Linecount value is used for VSE.

PageWidth=*integer*

Defines an integer value which is the default page width of the list output written to SYSLST/SYSPRINT. This value includes the one character ASA field in position 1.

The minimum value that may be defined is 72, the maximum is 133. For SELCOPY this value may be overridden by an OPTION PAGEWIDTH specification in SELCNAM.

If allowed to default to 0 (zero), 133 is used on all systems.

Separator=*char(1)*

Defines a single character which is to be used as the default SELCOPY and CBLVCAT command separator character for operations that occur on the same SYSIN/SYSIPT input record.

Note that characters apostrophe ('), quote ("), asterisk (*), commercial at (@), comma (,) and backslash (\); arithmetic operators plus (+) and minus (-) and comparison operators equals (=), not (= and ^), less than (<) and greater than (>), all have a special meaning to SELCOPY and must not be defined as the command separator character.

For SELCOPY this value may be overridden by an OPTION SEP specification in SELCNAM.

Default separator character is exclamation mark (!).

SELCOPY Options

The following CBLNAME options are applicable to SELCOPY only and are grouped by their relevance to each operating system.

Options Relevant to All Systems

SMinRC=*integer*

Defines an integer value which is the minimum non-zero return code that will be passed to the operating system when SELCOPY terminates.

Any return code that is below this minimum is automatically suppressed and replaced with zero. Note, however, that SELCOPY's list output summary will still display the unsuppressed return code value.

The default minimum value is 0 (zero).

SAbTrap=ON|OFF

Defines whether SELCOPY Abend Trap is activated by default.

If a Program Check occurs and SAbTrap=ON then it will be intercepted by SELCOPY and diagnostic information (PSW & Registers) written to SYSLST/SYSPRINT.

This option setting may be overridden by OPTION ABTRAP specified in the SELCNAM file.

The default is OFF.

SOpsMsg=(null)|0|ALL|NOSEL|NOCTL|NONE

Output of SELCOPY error messages to the Operator's console may be undesirable. This option defines whether these error messages will be displayed and, if so, the type of SELCOPY error messages to be displayed.

Option settings are as follow:

null, 0 or ALL	Display all error messages.
NOSEL	Display Control Statement error messages only. (Suppress Selection Time errors.)
NOCTL	Display Selection Time error messages only. (Suppress Control Statement errors.)
NONE	Suppress both types of error messages.

The default is 0 (zero) - display all error messages.

SNotFoundMsg=YES|NO

Defines whether SELCOPY's 25 character, generated input record containing '--- KEY/REC NOT FOUND ---' is returned following an unsuccessful direct read by key or record number. Direct reads may occur for VSAM, CMS, ISAM, IMS/DL1 and ADABAS input.

If suppressed, the user will have to test the appropriate return code to determine successful input by direct read.

The default is YES.

SRDW=YES|NO

Defines whether the 4-byte Record Descriptor Word (RDW) is returned at the start of data read from RECFM=V format input data sets.

This option setting may be overridden by OPTION RDW or NORDW specified in the SELCNAM file.

The default is YES.

SPrtStopAft=*integer*

Defines an integer value which is the default STOPAFT value for PRINT operations.

The maximum value that may be defined by CBLNAME option is 32767.

The STOPAFT value instructs SELCOPY to STOP executing a particular operation AFTER it has been actioned the specified number of times. Installations may limit the amount of output to SYSLST/SYSPRINT by specifying a non-zero value for this option.

Note that this limit will only affect PRINT operations that do not have a STOPAFT value explicitly specified.

Beware of limiting production PRINT output which may be genuinely large.

The default is 0 (zero) - no limit.

SNoOutputRC=(null)|0|NONE|*integer*

Defines whether a non-zero return code is passed back if no output is written and, if so, the return code value to be passed.

When no output or EOJ operations are executed during the SELCOPY run then this CBLNAME option dictates the action taken by SELCOPY.

Option settings are as follow:

null or 0	Sets RC=16.
<i>integer</i>	Sets RC= <i>integer</i> where <i>integer</i> is a value between 1 and 254.
NONE	Sets RC=0.

The default is 0 (zero) - RC=16.

Options Relevant to z/OS Systems

DB2Plan=*char(8)*

Defines an 8-byte character value which represents the SELCOPY/DB2 Dynamic SQL PLAN name. This PLAN name must be bound to each DB2 subsystem against which the SELCOPY/DB2 interface will operate.

The default is CBLPLAN0.

DB2SubSys=*char(4)*

Defines a 4-byte character value which represents the default SELCOPY/DB2 subsystem.

This option setting may be overridden by OPTION SSN specified in the SELCNAM file.

The default is DB2A.

SVsamRc160=ERROR|EMPTY

Defines how VSAM RC=160 is interpreted by SELCOPY.

VSAM OPEN return code 160, reason code 72 indicates a defined but empty data set. Setting this option to EMPTY means that SELCOPY will return an end-of-file condition instead of Control Statement Error 77 (VSAM OPEN Error) for VSAM OPEN RC=160.

Note, however, that other reason codes that exist for VSAM OPEN return code 160 will also be treated as an empty data set condition.

The default is ERROR.

SDynallocFail=ERROR|EMPTY

Defines how a Dynamic Allocation failure is interpreted by SELCOPY.

Setting this option to EMPTY means that SELCOPY will return an end-of-file condition instead of Selection Time Error 574 (Dynamic Allocation Failure) for a failed attempt to allocate a data set at run time.

Note that if the data set to be allocated has an exclusive ENQ set by another process, then SELCOPY will attempt to allocate the data set a total of 10 times before returning a Dynamic Allocation Failure condition.

The default is ERROR.

SError584=YES|NO

Although applicable to all operating systems, this option is documented for z/OS systems only as only z/OS supports open for output on a data set that is also open for input. Attempting to do the same on VSE systems will erase all records from the file.

SError584 defines whether Selection Time Error 584 is returned when the same file is opened for both input and output concurrently using different file names (DDNAME/DLBL/FILEDEF).

This is a potentially dangerous situation which may result in unintentional data overwrite. e.g. A PUT operation for an output block is performed before a GET operation is performed for same (next) block.

However, at some installations, support for output to the same input file is desired and so this option was introduced to allow installations to disable Error 584 at their own discretion. **SError584=NO** will allow this I/O to occur without returning the 584 error message. **Do not set this option lightly.**

The default is YES - return Error 584.

SSysBlksize=YES|NO

Defines whether SMS System Determined BLKSIZE is to be used on output when BLKSIZE=0.

The default is YES.

SMVSBufln=*integer*

Defines an integer value which represents the default number of input buffers for z/OS sequential files.

Where QSAM is used for sequential I/O, multiple data buffers are allowed. Increasing the number of data buffers usually improves performance as less I/O occurs. This option allows definition of a system default number of buffers to be used for sequential data set input (maximum 255).

The default is 0 - the number of input buffers for QSAM is determined by the system.

SMVSBufoOut=*integer*

Defines an integer value which represents the default number of output buffers for z/OS sequential files.

Where QSAM is used for sequential I/O, multiple data buffers are allowed. Increasing the number of data buffers usually improves performance as less I/O occurs. This option allows definition of a system default number of buffers to be used for sequential data set output (maximum 255).

The default is 0 - the number of output buffers for QSAM is determined by the system.

Options Relevant to VSE Systems

SBufSize=*integer*

Defines an integer value which represents the default I/O buffer size to be used for disk and tape sequential file processing if no BLKSIZE is specified.

The maximum value that may be defined by this CBLNAME option is 65535, however, you should not choose a value that exceeds the half track capacity of your DASD devices. Note also that TAPE blocksize has a maximum of 32767.

The default is 0 (zero) which means that SELCOPY will attempt to determine the I/O buffer size from DASD device capacities. (See **SDevType** option.)

SDevType=*devicetype*

Defines a DASD device type which is used to determine the I/O buffer size to be used for disk and tape sequential file processing if no BLKSIZE is specified and CBLNAME option **SBufSize=0**.

If a CKD device type is specified, then the buffer size will be the track capacity of the chosen device. If an FBA device is specified, the value specified by CBLNAME option **SMaxFBABlock** is used or, if this option is set to zero, 16384.

The following device types are valid:

null, 0 or SYSRES	The System Residence volume device type. If SYSRES is unassigned, 3380 is implied for dynamic partitions and 3330 for static partitions.
2311	Device type is 2311.
2314	Device type is 2314.
3330	Device type is 3330.
3340GEN	Device type is 3340GEN.
3340M35	Device type is 3340M35.
3340M70	Device type is 3340M70.
3350	Device type is 3350.
3330M11	Device type is 3330M11.
3310	Device type is 3310 (FBA).
3370	Device type is 3370 (FBA).
3375	Device type is 3375.
3380	Device type is 3380.
3390	Device type is 3390.
9345	Device type is 9345.
9336	Device type is 9336.

The default is 0 (zero) - the SYSRES volume.

SMaxFBABlock=integer

Defines an integer value which represents the maximum FBA blocksize. This option determines the default I/O buffer size to be used for FBA devices.

The maximum value that may be defined by this CBLNAME option is 32760, a restriction imposed by standard Logical IOCS.

The default is 0 (zero) which means that a value of 16384 is used.

SCardIn=(null)|0|SYSNNN|SYSIPT

Defines the Logical Unit from which SELCOPY control statements will be read.

Option settings are as follow:

null or 0	SELCOPY's control statements are read from the same device as the EXEC SELCOPY job control statement. If this is a card reader then use SYSnnn if possible, otherwise use SYSIPT. If the job was initiated from the operator's console then continue reading SELCOPY control statements from the console.
SYSNNN	Read control cards from SYSnnn if possible.
SYSIPT	Always read control cards from SYSIPT. This option is required if executing SELCOPY within a VSE procedure.

Setting this option to SYSNNN or SYSIPT is also desirable for execution of SELCOPY from ICCF or from CMS/DOS. Having set one of these options, it may be overridden by setting UPSI 11000001. (X'C1' for console input)

The default is 0 (zero).

SFailClose=YES|NO

In the event of an error being detected by SELCOPY, this option defines whether SELCOPY closes the files that it has opened during the job run.

This is required when dynamic update of VSAM catalog statistics for files opened by SELCOPY is to be prevented if a Control Statement or Selection Time Error is encountered.

Not applicable to z/OS since data sets are automatically closed by the system if left open by the program.

The default is YES - close opened files.

SSP2RetCode=YES|NO

Defines whether SELCOPY return codes are to be passed back following job completion for VSE systems.

Although VSE systems at VSE/SP2 and later support return codes, this option may be set to YES to suppress SELCOPY's return code and force action as for earlier releases of VSE. In this case SELCOPY will terminate using either of the VSE EOJ or CANCEL macros.

Suppressing SELCOPY's return code is not recommended in modern systems and should only be done if called by an OEM product that does not support VSE return codes.

The default is NO - Do not suppress SELCOPY's return code.

SCancelDL1=YES|NO

Defines whether a job is cancelled, using VSE CANCEL macro, if an error condition occurs during execution of SELCOPY when invoked by VSE DL/1.

Setting this option to YES forces the cancel to occur in these circumstances. Note that this is not usually required since VSE DL/1 Release 1.8 and later will accept SELCOPY return codes and act accordingly.

The default is NO - Do not force SELCOPY to cancel.

SSegLen512=YES|NO

Defines whether a default segment length of 512 is to be used for DL/1 data bases read by SELCOPY when invoked by VSE DL/1 running under MPS.

In certain VSE environments, when the MPS version of DL/1 is executed via DLZMP1xx or DLZCTRL, communication problems can arise with regard to SELCOPY's inspection of DL1 storage in its attempt to establish the LRECL of the last segment read. (A Fetch Protection exception can occur).

To avoid this situation, set this option to YES and so default all segment lengths read via DL/1 MPS to 512 bytes. If MPS is not used, then this switch is ignored and segment lengths are established in the normal way.

The default is NO - Do not use default segment length 512.

STapeRewind=YES|NO

Defines whether the default action on closing a VSE input tape is to rewind the tape only (CLOSE=RWD) or to rewind and unload it (CLOSE=UNLD).

The default is NO - CLOSE=UNLD.

STapeInpLIOCS=YES|NO

Defines whether Logical IOCS is to be used for processing RECFM=V/VB/F/FB input tape files.

SELCOPY traditionally treats all VSE disk and tape input files as RECFM=U and performs its own de-blocking of input records. This has the advantage that SELCOPY can check whether the BLKSIZE (input buffer size) used to read the file is too small and if so return Selection Time Error 501.

However, to support input and automatic decryption of CA-EPIC encrypted TAPE files standard LIOCS is required. Setting this option to YES will ensure that this is the case but will bypass SELCOPY's additional BLKSIZE error checking for input tapes.

Note that, in addition to setting this switch to YES, the SELCOPY READ statement must include operand DEV=TAPE if the fname (TLBL/CA-EPIC DDNAME) specified is not of the format TAPEnn.

The default is NO - Do not use standard LIOCS for input tape files.

Options Relevant to VM/CMS Systems

SCMSVsam31=YES|NO

Defines whether the installed VSAM for CMS uses VSE/VSAM release 3.1 or later.

Releases of VSE/VSAM for CMS prior to release 3.1 have different control block structures which are used by SELCOPY for VSAM data set I/O. Set this option to NO if a VSE/VSAM for CMS release prior to 3.1 is installed at your installation.

The default is YES - VSE/VSAM 3.1 or later is installed.

SMixedCMS=YES|NO

If a CMS fileid (fn ft fm) is specified in quotes on a SELCOPY I/O statement, then this option defines whether it is upper cased before it is passed to CMS I/O routines.

Setting this option to YES will enable use of SELCOPY to read and write CMS files that have a lower or mixed case file name and file type. Files of this sort cannot be processed by standard CMS applications (e.g. XEDIT) and so may be used to store sensitive or private data.

The default is NO - Upper Case all quoted CMS fileids on SELCOPY I/O statements.

SCPCmds=YES|NO

Defines whether command streams may be submitted to CP from within a SELCOPY job using the SELCOPY CP operation.

The default is YES - CP command streams may be executed.

SCMSCmds=YES|NO

Defines whether command streams may be submitted to CMS from within a SELCOPY job using the SELCOPY CMS operation.

The default is YES - CMS command streams may be executed.

SSTACKCmds=YES|NO

Defines whether data may be added to the CMS STACK from within a SELCOPY job using the SELCOPY STACK operation.

The default is YES - Lines may be added to a CMS STACK.

CBLVCAT Options

The following CBLNAME options are applicable to CBLVCAT only and are categorised by according to their application.

General CBLVCAT Options

VLineSpace=*integer*

Defines an integer value which is the number of lines advanced before writing the next line of the SYSPRINT/SYSLST report output. e.g. A value of 1 will print report lines without intermediate blank lines, 2 will print the report with a single intermediate blank line between each report line, etc.

The default value is 2.

VMinRC=*integer*

Defines an integer value which is the minimum non-zero return code that will be passed to the operating system when CBLVCAT terminates.

Any return code that is below this minimum is automatically suppressed and replaced with zero. Note, however, that CBLVCAT's list output summary will still display the unsuppressed return code value.

The default minimum value is 0 (zero).

VOvlay=YES|NO

Defines whether file names (DSNs) that are longer than the customised width of the DSN report field, overlay data in the next, adjacent report fields or force a new report line to print the remaining fields for the particular entry (OPTION OVLAY/NOVLAY).

For VTOC reports, the default width of the DSN field is 45 which is large enough to accommodate any file name. Therefore, this option only applies on catalog reports or where the user has overridden the DSN field width on a REPORT statement with operand DSN *nn*.

The default value is NO - Do not overlay field entries.

VTZAdjust=YES|NO

Defines whether reported timestamps have local time zone adjustments applied or are in UTC format.

The default value is NO - Report UTC timestamps.

V2digitYear=YES|NO

Defines whether reported dates have a 2-digit or 4-digit year.

Note that using a 4-digit year will suppress output of the S/C or SHR report field in the standard Catalog report.

The default value is NO - Report dates with 4-digit years.

VCardInput=YES|NO

Defines whether to accept CBLVCAT control statement input via SYSIN/SYSIPT.

Very early releases of CBLVCAT did not support use of SYSIPT/SYSIN. In later releases, this option could be set to NO to disallow use of SYSIPT/SYSIN input in order to maintain compatibility with job control written for earlier releases.

The default value is YES - Allow card input.

VopsMsg=YES|NO

Output of CBLVCAT error messages to the Operator's console may be undesirable. This option defines whether Control Statement and Run Time error messages are to be displayed at the Operator's console.

The default is YES - Display all error messages.

VTuneDFP22=YES|NO

For z/OS systems only, this option defines whether or not the installed DFP is release 2.2 or later. This option is obsolete and should always be set to YES.

Differences in DFP releases 2.2 and later affect CBLVCAT's VSAM data set tuning recommendations. Note that, at a DFP release (later than 2.2), it was incorporated into DFSMS and ceased to be an individual product.

The default is YES - DFP Release 2.2 or later is installed.

VNonICF=YES|NO

For CMS systems only, this option defines whether z/OS catalogs accessed from CMS are VSAM catalogs or ICF catalogs.

Setting this option to YES will generate VSAM catalog, as opposed to ICF catalog, IDCAMS DEFINE statements when DEFINE is specified on CBLVCAT LISTVCAT input.

The default is NO - z/OS catalogs are ICF.

VForceCancel=YES|NO

For VSE systems only, this option defines whether CBLVCAT return codes are to be passed back following job completion.

Although VSE systems at VSE/SP2 and later support return codes, this option may be set to YES to suppress CBLVCAT's return code and force action as for earlier releases of VSE. In this case SELCOPY will terminate using either of the VSE EOJ or CANCEL macros.

Suppressing CBLVCAT's return code is not recommended in modern systems and should only be done if called by an OEM product that does not support VSE return codes.

The default is NO - Do not suppress CBLVCAT's return code.

CBLVCAT VTOC Report Options**VFreeSpace=**YES|NO

Defines whether free space extent information is to be displayed by default.

If this option is set to YES, then, for all VTOC reports, free space information is automatically displayed in the format defined by the **VFreeTab** option.

The default is NO - Do not automatically display free space extent information. (LISTVTOC OPTION NOFREE)

VFreeTab=YES|NO

If option **VFreeSpace** is set to YES, this option defines whether free space extent information is displayed as report lines entries in their appropriate position within the volume (LISTVTOC OPTION FREE) or as a Free Space table following the report (LISTVTOC OPTION FREETAB).

If this option is set to YES, the free space is displayed as a Free Space table following the report.

The default is NO - Display free space information as entries within the report.

VExpd=YES|NO

Defines whether the eye-catcher ***EXPD*** is displayed, instead of file's expiry date, for files that have expired (LISTVTOC OPTION EXPD/NOEXPD).

The default is YES - Display the ***EXPD*** eye-catcher as appropriate.

VPerm=YES|NO

Defines whether the eye-catcher **PERMANENT** is displayed, instead of file's expiry date, for files that are defined as permanent (LISTVTOC OPTION PERM/NOPERM).

For VSE, sequential files are permanent if an explicit expiry date of 1999/365 or 1999/366 has been defined.

The default is YES - Display the PERMANENT eye-catcher as appropriate.

VSortOrder=EXT|EXTPRIME|DSN|EXP|DATE|SIZE

Defines the default order by which LISTVTOC report entries are sorted (REPORT VTOC SORT/SORTA).

Valid operands are:

EXT	Ascending order of absolute VTOC extent.
EXTPRIME	Ascending order of the files' primary VTOC extent.
DSN	Ascending order of file name.
EXP	Ascending order of file expiry date.
DATE	Descending order of created date.
SIZE	Descending order of file size.

The default is EXT.

VVTOCPercent=*integer*

Defines an integer value which is the percentage number of tracks used threshold which, if exceeded, results in the following:

1. The Total Free Tracks percentage used value, which is displayed in the free space table (FREETAB), is flagged with asterisks. (e.g. **85% ** USED)
2. Warning message "*WARN 003 - VOLUME GETTING/IS FULL*" is displayed and RC=06 is set.

The default value is 85.

VVolSer=YES|NO

Defines whether or not volume serial numbers are suppressed for z/OS data set entries that have a different volser in the DSCB1 (VTOC Format 1) record to that of the reported volume.

The default value is YES - Suppress volume serial number display.

CBLVCAT Catalog Report Options

VCatFileName=*char(8)*

Defines a character string of up to length 8 bytes which is the default filename (DDname/DLBL) used to identify a catalog when no operand DD, REF, KEY (for z/OS systems) or CAT (for VSE systems) is provided on the first LISTVCAT control statement.

The default is IJSYSUC.

VISCatalog=YES|NO

For VSE systems only, this option defines whether or not the entire VSAM catalog, on which the report is to be generated, is loaded into storage for improved performance of subsetted catalog reports (LISTVCAT OPTION ISC/NOISC).

The default is NO - VSAM catalog is not loaded into storage.

VAvrOrLmax=AVRL|LMAX

For a non-customised catalog report output, this option defines whether the field AVRL (defined average record length - LISTVCAT OPTION AVRL) or field LMAX (defined maximum record length - LISTVCAT OPTION LMAX) is displayed by default.

Non-customised (standard) catalog reports are generated when no REPORT VCAT statement is provided.

The default is LMAX.

VExpOrCICA=CICA|EXCP

For a non-customised catalog report output, this option defines whether the field EXCPS (number of EXCPs - LISTVCAT OPTION EXCPS) or field CI/CA (number of Control Intervals per Control Area - LISTVCAT OPTION CI/CA) is displayed by default.

Non-customised (standard) catalog reports are generated when no REPORT VCAT statement is provided.

The default is EXCP.

VPCOrUnused=PCNT|UNUSED

For a non-customised catalog report output, this option defines whether the field PCNT (percentage of allocated space used - LISTVCAT OPTION PCNT) or field ALLOCATED UNUSED (number of unused tracks/blocks - LISTVCAT OPTION UNUSED) is displayed by default.

Non-customised (standard) catalog reports are generated when no REPORT VCAT statement is provided.

The default is PCNT.

VShrOrSC=SHR|SC

For VSE systems non-customised catalog report output, this option defines whether the field SHR (Cross System Share Option - LISTVCAT OPTION SHR) or field S/C (Primary Space Class - LISTVCAT OPTION S/C) is displayed by default.

Non-customised (standard) catalog reports are generated when no REPORT VCAT statement is provided.

Note that neither of these fields are displayed in the non-customised catalog report if option **V2digitYear** is set to NO.

The default is SHR.

VTSOrDefined=TS|DEFINED

For a non-customised catalog report output, this option defines whether the field TIMESTAMP (last accessed timestamp - LISTVCAT OPTION TIMESTMP) or field DEFINED (file definition date - LISTVCAT OPTION DEFINED) is displayed by default.

Non-customised (standard) catalog reports are generated when no REPORT VCAT statement is provided.

The default is TS.

VAlias=YES|NO

For z/OS systems only, this option defines whether or not ALIAS entries defined in the catalog are displayed in the catalog report (LISTVCAT OPTION ALIAS/NOALIAS).

The default is YES - Display ALIAS entries.

VAssoc=YES|NO

Defines whether or not any PATH or AIX association catalog entries are displayed immediately following the applicable file entry in the catalog report (LISTVCAT OPTION ASSOC/NOASSOC).

The default is YES - Display associated entries.

VIndex=YES|NO

Defines whether or not associated index component entries are reported for KSDS, AIX and VRDS files (LISTVCAT OPTION INDEX/NOINDEX).

The default is YES - Report index entries.

VTypeExtX=YES|NO

Defines whether an oertype of "X" occurs in the 4th position of the TYPE field for files that are defined with the SMS Extended attribute or, for VSE systems, defined as an EXTRALARGEDATASET. (e.g. KSDX, ESDX, etc.)

The default is YES - Oertype with "X" for SMS Extended or VSE VSAM EXTRALARGEDATASET.

VFlagImbed=YES|NO

Defines whether the imbedded flag (**--IMB--**) is displayed by default in the KL, RKP/BLK/IMB field or IMB/REP field for index report entries defined with IMBED.

Note that IDCAMS no longer supports the DEFINE CLUSTER attribute, IMBED.

The default is YES - Flag IMBED index entries.

VFlagRepli=YES|NO

Defines whether the replicate flag (**--REP--**) is displayed by default in the KL, RKP/BLK/IMB field for index report entries defined with REPLICATE.

Note that IDCAMS no longer supports the DEFINE CLUSTER attribute, REPLICATE.

The default is YES - Flag REPLICATE index entries.

VGDGDataset=YES|NO

For z/OS systems customised catalog report only, this option defines whether or not the absolute generation number is appended to the GDG DSN displayed in a GDG report entry (LISTVCAT OPTION GDGDSN/NOGDGDSN).

The default is NO - GDG absolute generation number is not appended to the DSN displayed.

VGDGRepeat=YES|NO

For z/OS systems customised catalog report only, this option defines whether or not display of the GDG DSN is repeated on multiple report lines for the same GDG entry (LISTVCAT OPTION GDGRPT/NOGDGRPT).

The default is NO - GDG DSN is not repeated.

VVolInfo=YES|NO

Defines whether volume information is displayed by default for each VSAM file entry in the catalog (LISTVCAT OPTION VOLINFO/NOVOL).

The default is YES - Display volume information.

VDevHex=YES|NO

Defines whether the device type displayed in the DEVICE column for a customised catalog report with REPORT VCAT VOL2/VOL4/VOL5 is the hex device code (e.g. 3010200F) or the interpreted device type (e.g. 3390).

This can be useful for cataloged tape files where CBLVCAT does not distinguish between different tape devices and so displays TAPE in the DEVICE field. Setting this option to YES will display the hex device code for the particular tape device.

The default is NO - Display interpreted DEVICE type.

VUseCatDSN=YES|NO

Defines whether the catalog DSN or its DDNAME is displayed as the column heading for the DSN field.

The default is NO - Display the DDNAME.

VMountVVDS=YES|NO

For z/OS systems, this option defines whether the operator should be prompted to mount off-line volumes when an attempt is made to open a VVDS for ICF catalog reports (LISTVCAT OPTION MOUNT/NOMOUNT).

Setting this option to NO will result in warning message "WARN 005 volser - DYNALLOC OPEN ERROR nnn", RC=06 is set and processing continues with the next entry.

The default is YES - Prompt the operator to mount the volume.

VMaxExtents=*integer*

Defines the default maximum number of physical extents that are to be displayed for each entry in the catalog report (LISTVCAT OPTION CBLVCEXT).

The default is 0 (zero) - No extent information is displayed.

VVolsPercent=*integer*

For VSE systems only, this option defines an integer value which is the percentage threshold for the amount of VSAM space **used** on a volume which, if exceeded, results in the following:

1. The percentage blocks/tracks used value displayed in the PCNT field of the volume information summary table is flagged with asterisks. (e.g. **92% **)
2. Warning message "*WARN 012 - DATA SPACE GETTING/IS FULL*" is displayed and RC=06 is set.

The default value is 85.

CBLVCAT Tuning Options

VOnline=YES|NO

Defines whether files containing a DSN/file name qualifier, "ONLINE", are to be treated as files that are on-line to CICS or IMS systems. (e.g. SYS2.CBL.ONLINE.DATA) CBLVCAT's tuning recommendations for on-line files are adjusted accordingly.

The default is NO.

VCICS=YES|NO

Defines whether files containing a DSN/file name qualifier, "CICS", are to be treated as files that are on-line to CICS or IMS systems. (e.g. SYS2.CBL002.CICS.DATA) CBLVCAT's tuning recommendations for on-line files are adjusted accordingly.

The default is NO.

VIMS=YES|NO

Defines whether files containing a DSN/file name qualifier, "IMS", are to be treated as files that are on-line to CICS or IMS systems. (e.g. SYS2.CBL232.IMS.DBD002) CBLVCAT's tuning recommendations for on-line files are adjusted accordingly.

The default is NO.

VDL1=YES|NO

Defines whether files containing a DSN/file name qualifier, "DL1", are to be treated as files that are on-line to CICS or IMS systems. (e.g. SYS2.CBL232.DL1.DBD032) CBLVCAT's tuning recommendations for on-line files are adjusted accordingly.

The default is NO.

VDLI=YES|NO

Defines whether files containing a DSN/file name qualifier, "DLI", are to be treated as files that are on-line to CICS or IMS systems. (e.g. SYS2.CBL232.DLI.DBD032) CBLVCAT's tuning recommendations for on-line files are adjusted accordingly.

The default is NO.

VString=YES|NO

Defines whether files containing a DSN/file name qualifier specified by the *VOStr* option, are to be treated as files that are on-line to CICS or IMS systems. (e.g. SYS2.CBL232.XYZ.DBD032) CBLVCAT's tuning recommendations for on-line files are adjusted accordingly.

The default is NO.

VOStr=*char(8)*

Defines a character string of up to length 8 bytes which represents a user defined DSN/file name qualifier used by CBLVCAT to identify an on-line file.

If *VString* is set to YES, a DSN/file name containing a qualifier that matches this string is treated as belonging to a file that is on-line to CICS or IMS systems. CBLVCAT's tuning recommendations for on-line files are adjusted accordingly.

The default is x'00' (hex zeros).

VMaxOnlineCI=*integer*

Defines an integer value which represents the maximum CISIZE that may be recommended by CBLVCAT's tuning of on-line files.

Maximum value supported by the IDCAMS DEFINE CONTROLINTERVALSIZE operand is 32768.

The default is 4096.

VJCLBufnd=YES|NO

For VSE TUNE output, this option defines whether BUFND override values are displayed in the tuning JCL Override block for releases of VSE/SP prior to 1.4.1.

Releases of VSE/SP prior to 1.4.1 do not support JCL override of VSAM data buffers and so this option is only applicable when modelling for a later release of VSE. If this option is set to NO, BUFSP JCL override values will be reported for releases of VSE/SP 1.4.1 and earlier.

The default is NO.

VTunePrtCap=YES|NO

For TUNE output, this option defines whether or not the File Capacities table is reported for each file selected for tuning (LISVCAT OPTION PRTCAP/NOPCAP).

The default is YES - Report the File Capacities information.

VTunePrtJCL=YES|NO

For TUNE output, this option defines whether or not the JCL Buffer Override parameters are reported for sequential processing of files selected for tuning (LISVCAT OPTION PRTJCL/NOJCL).

The default is YES - Report the JCL Override information.

VTunePrtSev=YES|NO

For TUNE output, this option defines whether or not CBLVCAT's Severity messages are reported for each file selected for tuning (LISVCAT OPTION PRTSEV/NOPSEV).

The default is YES - Report SEV *n-nn* messages.

VFilePercent=*integer*

Defines an integer value which is the percentage threshold for the amount of tracks/blocks **used** in the currently allocated space for VSAM file which, if exceeded, results in the following:

1. The percentage blocks/tracks used value displayed in the PCNT field for the VSAM element entry (DATA or INDEX) is flagged with asterisks. (e.g. **87% **)
2. if the DATA component exceeds this threshold, Severity condition "*SEV 1-09 - FILE GETTING/IS FULL*" is flagged for the file.

The default value is 85.

VSecAlloc=*integer*

Defines an integer value which is the **warning** threshold for the number of secondary extents that exist for a KSDS or AIX entry. If this warning threshold is exceeded but the threshold set by option *VSecAllocErr* is not exceeded, then the following will occur:

1. The secondary allocations number displayed in the ALLOC SEC field for a KSDS cluster or AIX component is flagged with a single asterisk suffix followed by the number of secondary extents. (e.g. 7*4)

Note that number of secondary extents is equal to the total number of extents minus 1. A VSAM data set can be expanded to 123 extents per volume. Each component of a multi-volume VSAM data set can be extended to a maximum of 255 extents combined over all volumes. For VSE systems only, VSAM files defined with REUSE or UNIQUE a limited to a maximum of only 16 extents per volume.

2. Severity condition "*SEV 2-19 - SEC EXTENTS TOO HIGH*" is flagged for the file.

If secondary extents exist but the *VSecAlloc* threshold is not exceeded, then Severity condition "*SEV 1-18 - SEC EXTENTS EXIST*" is flagged for the file.

The default value is 4.

VSecAllocErr=*integer*

Defines an integer value which is the **error** threshold for the number of secondary extents that exist for a KSDS or AIX entry. If this warning threshold is exceeded, then the following will occur:

1. The secondary allocations number displayed in the ALLOC SEC field for a KSDS cluster or AIX component is flagged with triple asterisk suffix. (e.g. 47***)
For non-customised catalog reports only, the entry is also immediately followed by a new report line displaying the number of secondary extents. (e.g. *** 105 SEC EXTENTS ***)
2. Severity condition "*SEV 3-19 - SEC EXTENTS TOO HIGH*" is flagged for the file.

The default value is 10.

VCISplits=*integer*

Defines an integer value which represents one of the following depending on the number of record inserts that have occurred for a file.

1. **Inserts >= 100**, this value is an actual number of CI splits threshold.

2. **Inserts < 100**, this value is a percentage number of CI splits per number of inserts threshold.

A hard coded threshold of 30 exist, which, like the *VCISplits* threshold, represents an actual or percentage number of CI splits. This threshold value controls the level of Severity message displayed when the *VCISplits* threshold is exceeded. i.e. if the percentage or actual number of CI splits (as appropriate) exceeds the *VCISplits* threshold then one of the following will occur:

1. Where CI splits does not exceed the hard coded threshold, Severity condition "*SEV 2-08 - CI SPLITS TOO HIGH*" is flagged for the file.
2. Where CI splits also exceeds the hard coded threshold, Severity condition "*SEV 3-08 - CI SPLITS TOO HIGH*" is flagged for the file indicating that there is insufficient reserved free space or the file is overdue for re-organisation.

If the *VCISplits* value is greater than 30, then SEV 2-08 is suppressed.

The default value is 1.

VCASplits=integer

Defines an integer value which is the percentage threshold for the number of CA splits per number of record inserts that have occurred for a KSDS or AIX file only. If this threshold is exceeded, then Severity condition "*SEV 3-06 - CA SPLITS TOO HIGH*" is flagged for the file.

If CA splits exist but the *VCASplits* threshold is not exceeded, then Severity condition "*SEV 2-05 - CA SPLITS EXIST*" is flagged for the file.

The default value is 1.

CBLVCAT DEFINE Output Options

VDefine=YES|NO

Defines whether an IDCAMS DEFINE job step is automatically generated and written to SYSPUNCH/IJSYSPCH for each entry in the catalog report (LISTVCAT OPTION DEFINE/NODEFINE).

The default is NO - Do not automatically generate an IDCAMS DEFINE job.

VReorg=YES|NO

Defines whether to generate a multi-step job that uses applications IDCAMS and SELCOPY to perform a VSAM file re-organisation, or to simply generate an IDCAMS DEFINE job when LISTVCAT OPTION DEFINE is specified.

The default is NO - Do not generate a file re-organisation job.

VReorgDisk=YES|NO

If option *VReorg* is set to YES so that a VSAM file re-organisation job is generated, this option defines whether the temporary work file, used to store the data while the original data set is redefined, resides on DASD or Tape.

The default is NO - Work file resides on Tape.

VDefCatName=YES|NO

Defines whether or not the CATALOG operand and appropriate catalog name is to be included in generated IDCAMS DEFINE statements.

If this option is set to NO, then the generated IDCAMS DEFINE statements will not contain a CATALOG operand and the define operation will use the default order of catalog selection.

The default is YES - Include an IDCAMS DEFINE CATALOG operand.

VDelCatName=YES|NO

Defines whether or not the CATALOG operand and appropriate catalog name is to be included in generated IDCAMS DELETE statements.

If this option is set to NO, then the generated IDCAMS DELETE statements will not contain a CATALOG operand and the define operation will use the default order of catalog selection. Beware that care should be taken if using DELETE without a catalog specification.

The default is YES - Include an IDCAMS DELETE CATALOG operand.

VDefJCL=YES|NO

Defines whether or not z/OS/VSE job control is to be included in the DEFINE output.

The default is YES.

VDefCluster=YES|NO

Defines whether or not IDCAMS DEFINE CLUSTER statements are to be included in the DEFINE output.

The default is YES.

VDefPath=YES|NO

Defines whether or not IDCAMS DEFINE PATH statements are to be included in the DEFINE output.

The default is YES.

VDefAix=YES|NO

Defines whether or not IDCAMS DEFINE AIX statements are to be included in the DEFINE output.

The default is YES.

VDefBldIndex=YES|NO

Defines whether or not IDCAMS BLDINDEX statements are to be included as part of any DEFINE AIX job steps in the DEFINE output.

The default is YES.

VDefNotes=YES|NO

Defines whether or not tuning information (LISTVCAT OPTION TUNE) displayed in the catalog report output is included in the generated DEFINE output.

The default is NO.

VDefComments=YES|NO

Defines whether or not the original IDCAMS DEFINE operands for the file are included as comments for generated tuned (LISTVCAT OPTION TUNE) DEFINE output.

The default is YES.

VDelComment=YES|NO

Defines whether or not IDCAMS DELETE statements are to be commented (enclosed in /* */) for generated DEFINE output.

The default is YES.

Appendix B. SELCNAM Options File (SELCOPY)

Existence of a correctly configured SELCNAM file is mandatory for successful operation of SELCOPY. It is read at the start of every SELCOPY execution to establish operational licence information and other environment options.

The SELCNAM file is established by the following search order:

1. An existing SELCNAM DDNAME/DLBL.
2. A SELCNAM DDNAME/DLBL which is dynamically allocated by SELCOPY to the DSN supplied via the *SNamDsn* option and, for VSE only, the *SNamVol* option in CBLNAME.
3. A SELCNAM DDNAME/DLBL which is dynamically allocated by SELCOPY to the DSN "SELCOPY.NAM". For VSE, this file exists on a volume specified by the *SNamVol* CBLNAME option, otherwise SYSWK1.

This chapter describes the options that may be configured in the SELCNAM file and the method by which it is maintained.

Sub-sections:

1. [Maintaining SELCNAM](#)
2. [Mandatory Options](#)
3. [SELCOPY Options](#)

Maintaining SELCNAM

To generate a new SELCNAM options file, edit and update sample job ZZISNAM in CBL.SZZSSAM1, as described in the job comment data, then submit it to invoke IEBGENER and populate the data set.

By default, the SELCNAM file is created as a cataloged, disk sequential data set. However, on z/OS systems, it may exist as a PDS/PDSE library member or as a VSAM data set.

Because it is read on every execution of SELCOPY (allocated DISP=SHR), it is important that the SELCNAM data set is never accessed exclusively by another application or user.

SELCOPY Already Installed

If SELCOPY is already installed on your system, then a SELCNAM file should already exist.

In order to make changes to an existing SELCNAM file (e.g. annual update of licence information), perform the following tasks:

1. Copy the existing SELCNAM data set to a new DSN which we will name &PREFIX..NEWSELC.NAM (use a name appropriate to your operating system naming standards).

Because a text editor may apply an exclusive ENQ on the edited file and because any error you make in coding licence information in SELCNAM will immediately cause SELCOPY to fail, you **must not** make changes directly to your production SELCNAM file.
2. Edit the &PREFIX..NEWSELC.NAM and modify the options as required. Note that if updating the SITE, RANGE and PASS values, these must be entered exactly as supplied by CBL.
3. Include a SELCNAM DD statement for DSN &PREFIX..NEWSELC.NAM in a test SELCOPY job (e.g. ZZIIVP1 in CBL.SZZSSAM1) and submit it to verify that the licence information has been updated correctly. The new expiry date appears in the footer of the SELCOPY SYSPRINT/SYSLST output.

If this test job runs successfully (without producing **ERROR 124** - Check expiry) then the licence information was entered successfully. If not, re-enter your changes to &PREFIX..NEWSELC.NAM and repeat the test until it is successful.
4. **Backup** your current production SELCNAM file (to enable rollback in case of a problem).
5. Schedule a time when you can migrate the new SELCNAM to production without impacting production SELCOPY work. &PREFIX..NEWSELC.NAM should be copied over your production version of the SELCNAM file.
6. Rerun your test SELCOPY job **without** the SELCNAM DD. The new production SELCNAM will be read by default.
 - ◆ If the test job still runs successfully then your changes to SELCNAM are complete.
 - ◆ If the test job fails, re-instate the backup copy of your production SELCNAM and repeat this procedure until successful.

Mandatory Options

The prime role of the SELCNAM options file is to contain the SELCOPY licence options, SITE, RANGE and PASS.

Although it is strongly recommended that SELCOPY licence information is maintained in the SELCNAM file, it may, however, be maintained in the CBLNAME module via the *Site*, *SPassword* and *SDateRange* options instead.

If no SITE, RANGE and PASS options exist in the SELCNAM file, SELCOPY will attempt to resolve licence information from these CBLNAME option values.

The following SELCNAM options are mandatory if SELCOPY licence information is to be maintained in SELCNAM.

OPTION SITE=*Your site name - location*

This option identifies the licensed company's installation name and location, as supplied by CBL, which will be included in each page heading of the product's default list output written to SYSLST/SYSPRINT.

The site string is between 20 and 36 bytes in length and will replace the first 36 bytes of the CBLNAME *Site* option value. It is case sensitive and must be entered as supplied by CBL. If not, SELCOPY will terminate with the following message:

```
ERROR 153 INVALID OPTION IN "SELCOPY.NAM" FILE
```

If the site string contains an apostrophe then the string must be enclosed by quotation marks ("), not apostrophes ('). e.g.

```
OPTION SITE="ABC Co. - Marlboro', UK"
```

OPTION RANGE=*yyyy/mm/dd-yyyy/mm/dd*

This option identifies a single operational date range window, as supplied by CBL, within which the SELCOPY program will function normally. Date ranges are inclusive and dates are specified in interational standard format e.g.

```
OPTION RANGE='1981/07/12-2011/07/13'
```

Multiple RANGE options may be specified in order to define multiple, possibly non-contiguous date range windows. If more than one RANGE parameter has been provided by CBL, then it is essential that all date ranges are specified.

If the system date falls outside all specified operational ranges, SELCOPY will terminate with the following message:

```
ERROR 124 (CHECK EXPIRY DATE)
```

OPTION PASS=*X'nnnn,nnnn,nnnn,nnnn'*

This option identifies the unique 8-byte hexadecimal password, as supplied by CBL. e.g.

```
OPTION PASS=X'0123,4567,89AB,CDEF'
```

The password is based on the values specified by the *SITE* and *RANGE* options.

If an incorrect password is specified, SELCOPY will terminate with the following message:

```
ERROR 124 (CHECK EXPIRY DATE)
```

SELCOPY Options

The following SELCNAM options are optional and may also be specified on OPTION statements within individual SELCOPY jobs.

OPTION ABTRAP=ON|OFF

Defines whether SELCOPY Abend Trap is activated by default.

If a Program Check occurs and *SAbTrap=ON* then it will be intercepted by SELCOPY and diagnostic information (PSW & Registers) written to SYSLST/SYSPRINT.

This option overrides the setting for CBLNAME option *SAbTrap*.

The default is OFF.

OPTION ASA0|NOASA0

Defines whether or not to include the mainframe ASA print control character 0 (zero) in column one for all PRINT records that are preceded by a blank line in the SELCOPY output SYSLST/SYSPRINT listing.

If ASA0 is specified the print control character 0 is used and the blank line immediately prior to a line containing ASA 0 is suppressed.

PRINT TYPE=S output for system print is not affected by the ASA0 and NOASA0 options.

The default is NOASA0.

OPTION CONTMAX=*integer*

Defines an integer value which represents the maximum length of a SELCOPY control statement.

Since SELCOPY control statements can span multiple records with use of the control statement continuation character, backslash (\), setting this option will control the acceptable overall length of a statement up to a maximum of 4096 characters.

The default is 4096.

OPTION DATAWIDTH=*integer*

Defines an integer value which represents the default number of characters that can be printed on a single line of the SYSPRINT/SYSLST output, using the SELCOPY PRINT or PLOG operations. User printed data that exceeds this length will wrap onto the next line and, if necessary, subsequent lines.

The maximum DATAWIDTH value is 100 characters, the minimum is 20 characters.

The default is 100.

OPTION NOPCTL|PRTCTL

Defines whether SELCOPY's control statements are re-written to SYSPRINT/SYSLST as part of the diagnostic listing for the SELCOPY run.

If PRTCTL is set, then control statements and their assigned selection id number are written to SYSPRINT/SYSLST before any user printed data and the execution totals summary table.

The default is PRTCTL.

OPTION NOPTOT or OPTION NOPSUM

Suppress output of the execution totals summary table which is written to SYSPRINT/SYSLST at the end of the SELCOPY run as part of the diagnostic report listing.

The default is to print the totals table.

OPTION NOPRINT

Equivalent to setting both options NOPCTL and NOPTOT/NOPSUM.

This option will suppress all SELCOPY's diagnostic report output to SYSPRINT/SYSLST. i.e. both the SELCOPY control statements and the execution totals summary table are suppressed. Only user printed data, generated via the PRINT or PLOG operations, is written to SYSPRINT/SYSLST.

The default is to print all diagnostic information. (control statements and totals table.)

OPTION PAGEDEPTH=*integer*

Defines an integer value which represents the default number of lines per page written to SYSPRINT/SYSLST.

This option overrides the setting for CBLNAME option *PageDepth*.
The maximum PAGEDEPTH value is 2147483647, the minimum is 10.

See CBLNAME option *PageDepth* for different default values on z/OS, CMS and VSE systems.

OPTION PAGEWIDTH=*integer*

Defines an integer value which represents the number of characters available for writing SYSPRINT/SYSLST page report headers, footers and user generated dump (TYPE=D) printed output.

The job execution timestamp and page number displayed in SELCOPY SYSPRINT/SYSLST page headers are right adjusted to the page width value. If the PAGEWIDTH option is specified, the operating system type and jobname are removed from the page header and the job execution date is displayed in international date standard format. If a sufficiently small PAGEWIDTH value is specified, the company details will be overwritten by the job execution timestamp and page number information.

The SELCOPY SYSPRINT/SYSLST page footer is centralised within the page width with enclosing pairs of asterisks (**) added or removed as appropriate to occupy the footer line.

User printed dump output (PRINT TYPE=D) will reduce to displaying X'10' bytes per line instead of X'20', if a PAGEWIDTH value of less than 132 is specified.

This option overrides the setting for CBLNAME option *PageWidth*.
The maximum PAGEWIDTH value is 132 characters, the minimum is 72 characters.

See CBLNAME option *PageWidth* for default value.

OPTION RDW|NORDW

Defines whether the 4-byte Record Descriptor Word (RDW) is returned at the start of data read from RECFM=V format input data sets.

This option overrides the setting for CBLNAME option *SRDW*.

See CBLNAME option *SRDW* for default value.

OPTION SEP=char(1)

Defines a single character which is to be used as the default SELCOPY command separator character for operations that occur on the same SYSIN/SYSIPT input record.

Note that characters apostrophe ('), quote ("), asterisk (*), commercial at (@), comma (,) and backslash (\); arithmetic operators plus (+) and minus (-) and comparison operators equals (=), not (= and ^), less than (<) and greater than (>), all have a special meaning to SELCOPY and must not be defined as the command separator character.

This option overrides the setting for CBLNAME option *Separator*.

See CBLNAME option *Separator* for default value.

OPTION SSN=char(4)

Defines a 4-byte character value which represents the default SELCOPY/DB2 subsystem.

This option overrides the setting for CBLNAME option *DB2SubSys*.

See CBLNAME option *DB2SubSys* for default value.

Appendix C. INI Options Files (SELCOPY/i)

The existence of correctly configured SELCOPY/i system and user INI files are mandatory for successful operation of SELCOPY/i.

The system INI file is read on startup of SELCOPY/i to establish global environment options. This is followed by input of the user's personal INI file to establish the user's own SELCOPY/i environment options.

This chapter describes the options that may be configured in the SELCOPY/i INI files and the method by which they are updated.

The SELCOPY/i system INI file must be updated following install of the SELCOPY Product Suite package.

Sub-sections:

1. [The System INI File](#)
2. [The User INI File](#)
3. [FIRSTUSE Utility](#)
4. [INI File Option Format](#)
5. [INI Options Summary](#)
6. [System INI Options](#)
7. [System & User INI Options](#)
8. [Displaying INI Fileids and Options](#)

The System INI File

The SELCOPY/i system INI file is a EBCDIC, sequential, plain text data set containing global options that apply to all users of SELCOPY/i.

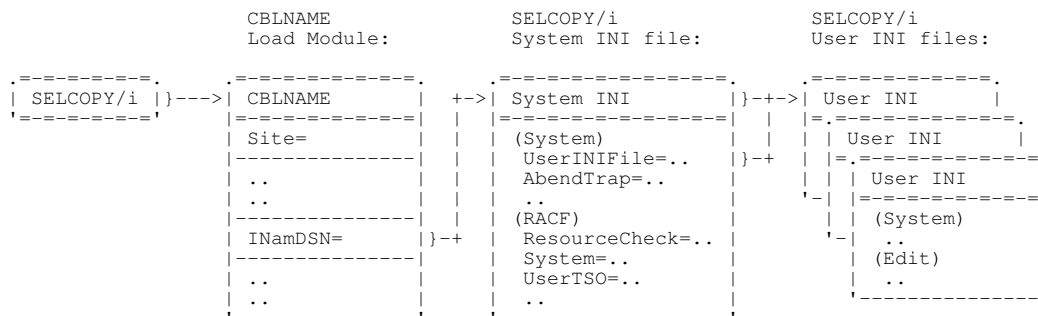
These options may be specific to the system INI file (see "[System INI Options](#)") or common to both the system and user INI files (see "[System & User INI Common Options](#)"). If an option that is a common system and user INI option and is specified in both INI files, then the value for the option as specified in the user INI file will take precedence.

Options that are specific to the SELCOPY/i system INI file cannot be overridden by the same option specified in the user INI file. These include options that control the following:

1. The DSN (fileid) mask for the SELCOPY/i user INI files.
2. A user's ability to access SELCOPY/i and some of its specific features.
3. The status of SELCOPY/i Abend handling.

The DSN of the SELCOPY/i system INI file is determined by option *INamDsn* in the CBLNAME options module. See topic "[Mandatory Options](#)" in chapter "[The CBLNAME Options Module](#)."

The relationship between the system and user SELCOPY/i INI files and the CBLNAME module are illustrated below.



Maintaining the SELCOPY/i System INI File

Following each fresh installation of SELCOPY/i, the installer must start (and logon) to SELCOPY/i in order to update the SELCOPY/i system INI file.

On startup of SELCOPY/i, the absence of a SELCOPY/i system INI file or a change in the recorded product release will prompt execution of the FIRSTUSE SITE utility for system INI file setup. This will generate a new SELCOPY/i system INI file or, if SELCOPY/i is already installed, update the references to product libraries, etc. in the existing system INI file. Note that the installer's userid must have read/write privileges to the SELCOPY/i system INI file for successful operation of FIRSTUSE SITE. See the [FIRSTUSE Utility](#).

Subsequent updates to an existing SELCOPY/i System INI file may be performed by an authorised user, by simply executing FIRSTUSE SITE or by using a text editor. However, the authorised user should beware that, if using a text editor (e.g. ISPF Edit) that applies an exclusive ENQ to the edited file, then SELCOPY/i will fail to startup properly whilst the SELCOPY/i system INI file is being edited.

Beware of adding malformed options to the System INI file since this will cause all INI options and their values to be dumped to the terminal during startup. See "[INI File Option Format](#)" for correct INI option specification.

The User INI File

The SELCOPY/i user INI file is a EBCDIC, sequential, plain text data set containing options that may be customised by the user to control the personal SELCOPY/i environment.

These options are common to both the system and user INI files (see "[System & User INI Common Options](#)"). If an option is specified in both INI files, then the value for the option as specified in the user INI file will take precedence. Occurrence of a system INI option in the SELCOPY/i user INI file will be ignored. (e.g. RACF options).

In addition to the standard INI options documented in this guide, the SELCOPY/i user INI file may contain non-standard option names and values which may be generated by the user or by the SELCOPY/i product itself during the course of the SELCOPY/i session.

Typical, non-standard, user INI options and their assigned values generated by SELCOPY/i, include options that correspond to individual enterable dialog and list window fields which are set to the last value entered by the user in these fields. These options are set automatically and subsequently saved to the SELCOPY/i user INI file when the session ends normally, and so maintaining the user's panel/list selections across SELCOPY/i sessions.

The DSN of the SELCOPY/i User INI file is identified by the *System.UserINIFile* option set in the SELCOPY/i System INI file. This option specifies a filemask which includes variable, %USER%, which represents the user's RACF logon id.

This is the recommended method of identifying a user's INI file DSN and the installer would have to take special action to avoid setting this option as part of the install procedure. If, however, this option is unset, then the following default User INI file DSN is used:

1. For z/OS systems, the User INI file is a sequential file with high level qualifier equal to the user's login id followed by '.SELCOPYI.INI'. i.e.

```
User INI file: %user%.SELCOPYI.INI
```

2. For CMS systems, the User INI file is the first file found on an accessed minidisk that has file name equal to the user's logon id and file type CBLIINI. e.g.

```
User INI file: %user% CBLIINI A
```

3. For VSE systems, the User INI file is the the LIBR member, cataloged in the same sublibrary as the System INI member, with a member name equal to the user's logon id and member type CBLIINI. e.g.

```
System INI file: OEM.SELCOPYI.SYSTEM.CBLIINI
User INI file: OEM.SELCOPYI.%user%.CBLIINI
```

For all systems a check is made to verify that the user ini file name is not the same as the system ini file. If it the same then the user ini file name is modified e.g. for z/OS systems '.U' is appended to the dataset name if possible.

Maintaining the SELCOPY/i User INI File

The first time a user starts (or logs on to) SELCOPY/i, a SELCOPY/i User INI file is automatically allocated for that user. This INI file contains some standard INI file option values.

These User INI file options may be configured by the user via the "Settings" menu on selecting option "0" from the "SELCOPY/i Primary Options" panel.

FIRSTUSE Utility

FIRSTUSE SITE

FIRSTUSE SITE is executed by the installer or an authorised user to customise the SELCOPY/i system INI file following install of a new release of SELCOPY/i.

The macro will prompt the installer to allocate data sets and customise options in the following sequence:

1. Allocate the SELCOPY/i system INI file if it does not already exist. The DSN is established by the *INamDSN* value set in the CBLNAME option module.

An edit view is opened to display the SELCOPY/i system INI file.

2. Identify the SELCOPY Product Suite install target CMX library for the new release. (CBL.SZZSDIST.CMX)
3. Optionally configure DB2 elements for SELCOPY Debug and SELCOPY/i DB2 features as follow:
 - ◆ Default DB2 subsystem name.
 - ◆ SELCOPY DB2 PLAN name as specified by CBLNAME option *DB2Plan*. (CBLPLAN0)
 - ◆ SELCOPY/i DB2 PLAN. (CBLPLAN1)

4. Identify the default dump DSN prefix used to create SELCOPY/i formatted dump data sets in the event of an unrecoverable error. (e.g. CBL.SIDUMP)

The generated dump data set names will be in the following format where **Dyyyyddd.Thhmsst** represents the Julian date and time at which the error occurred.

```
prefix.Dyyyyddd.Thhmsst
```

Note that general users do not need to have write access to data sets with this DSN prefix. The DSN prefix entered here may be overridden by a valid, user specific dump DSN prefix which the user may tailor via the Settings panels.

5. Identify the SELCOPY Product Suite install target HELP.HTML library for the new release. (CBL.SZZSHELP.HTML)
6. Identify and, if necessary, follow prompts to allocate your installation's common SELCOPY/i edit macro library. (e.g. CBL.SELCOPYI.SITE.CBLE)

This library will be made available to all users via an edit MACROPATH definition and is intended to contain edit macros developed at your installation.
7. Specify the command string or option path, that users enter at their ISPF Primary Menu command prompt, in order to start SDSF (or equivalent software) panels.

This is used by certain SELCOPY/i functions to allow users to display the job status queue for their submitted jobs and, if authorised, to display the operator console log.
8. Identify a valid DSN mask or a DDNAME that will be used to reference a user's personal SELCOPY/i User INI file. Each user must have WRITE access to their own user INI file.

To ensure a DSN mask specification references a DSN which is unique to each user, it **must** include the variable %USER% and may include system symbols specified within percent signs (%). e.g.

```
%&sysname%.SYS3.%user%.SELCOPYI.INI
```

If a DDNAME is specified, then you must ensure that the DDNAME will be allocated to the user's INI file before the user attempts to start or logon to SELCOPY/i. e.g. In TSO (ISPF), this may be done via a startup REXX exec which is unique to each user and executed when the user logs on to TSO.

9. Identify the SELCOPY Product Suite install target IPO, IPOPROC and TLIB libraries for the new release. (CBL.SZZSDIST.IPO, CBL.SZZSDIST.IPOPROC and CBL.SZZSDIST.TLIB)

These libraries contain SELCOPY/i panels and panel procedures.

10. Optionally configure the COBOL Compiler library and module name for SELCOPY/i structured edit using COBOL Copybooks.
11. Optionally configure the PL/1 Compiler library and module name for SELCOPY/i structured edit using PL/1 Include files.

INI File Option Format

All records within the SELCOPY/i System and User INI files are interpreted when the files are read at startup.

Blank lines are acceptable and text between an asterisk (*) and the end of the record is treated as comment data. i.e. Comment data may occupy a whole record or part of the record following the setting of an option.

INI Variable Names

SELCOPY/i System and User INI file option names are stored internally as two level variables where a single dot/period (.) is used to separate each level. e.g.

```
SYSTEM.COMDLINE
SYSTEM.COMMANDDELIMITER
```

The first level defines the category to which the variable relates (e.g. SYSTEM, EDIT, ISPF, HELP, SDE.) Within an INI file, the first level of the variable is identified as being a string enclosed in parentheses "()" that is also the first token on the record. e.g.

```
(SYSTEM)
```

For UK EBCDIC code pages only, the string may alternatively be enclosed in left and right square brackets represented by EBCDIC x'B1' and x'BB' respectively. Because these EBCDIC codes have a different representation in non-UK code pages, their use is not recommended.

Specification of a first level string defines the prevailing first level of all INI option variable names that follow until another first level string is encountered.

The second level of the INI variable identifies the specific option applicable to the first level category. The second level of an INI variable is specified as the first token on a record within the INI file with its assigned value following an equals (=) symbol. e.g.

```
COMDLINE=TOP
COMMANDDELIMITER=" ; "
```

The two level INI variable name is upper cased and so may be specified in any character case.

First level names may occur in any order and any number of times within an INI file. Therefore, INI variables having the same first level name do not need to be grouped together within an INI file. e.g.

```
(SYSTEM)
  COMDLINE=BOTTOM      * SYSTEM.COMDLINE=BOTTOM

(EDIT)
  INTERFACE=ISPF       * EDIT.INTERFACE=ISPF

(SYSTEM)
  PF1=HELP             * SYSTEM.PF1=HELP
```

INI Variable Values

The value may be enclosed in apostrophes (') or quotation marks (") which are mandatory if the value itself contains an apostrophe, quotation mark or an asterisk (*). Note, however, that they are not required for values containing blanks or mixed case text. The enclosing apostrophes or quotation marks are not stored as part of the value.

A null value is acceptable.

Values may reference the values of previously assigned INI variables by specifying the complete variable name with in percent symbols. (e.g. %SYSTEM.EDIT.MACROPATH% is the reference to the value assigned to variable EDIT.MACROPATH in the System INI file.)

Similarly, values may reference text edit environment variables (e.g. %DATE%, %FID%, etc.) which are resolved if the INI variable is referenced within the SELCOPY/i text editor - usually within a text edit macro or a command within a CMX file. e.g. A SYSTEM INI variable, PROD.TEST, is set to %TSOPFX%.DEV.D%YY%%MM%%DD% so defining a variable DSN prefix based on edit environment variables for a user's TSO prefix and current date. This INI variable may subsequently be referenced within the SELCOPY/i text editor to EDIT a user's daily log file:

```
< EDIT %SYSTEM.PROD.TEST%.USERLOG      * Becomes:  EDIT CBL.NBJ.DEV.D100422.USERLOG
```

The value assigned to an INI variable is stored in the format in which it was supplied, and will only be upper cased within SELCOPY/i code if appropriate to the variable's use.

An INI variable name may be duplicated within the same INI file. If this is the case, then the value assigned to the last occurrence of the variable name is used. e.g.

```
(SYSTEM)
  PF1=HELP
  PF1=UP MAX      * SYSTEM.PF1=UP MAX - Replaces SYSTEM.PF1=HELP
```

INI Options Summary

The following table provides a brief description of the configurable INI options listed in alphabetical order and identifies the INI file (System and/or User) in which the option should be specified.

Option	Description	System	User
CBLVCAT.DEFAULTCOMMAND	Command executed on starting CBLVCAT Interactive.	X	X
CBLVCAT.ESR	CBLVCAT extended SVC routing code number for SVC=109.	X	-
CBLVCAT.PROGRAMNAME	CBLVCAT executable load module name.	X	X
CBLVCAT.SVC	CBLVCAT SVC number.	X	-
COBOLREPLACE.nnFR	COBOL REPLACE source string.	X	X
COBOLREPLACE.nnTO	COBOL REPLACE replacement string.	X	X
DB2.EXEC	DB2 SQL utility statement execution policy.	X	X
DB2.PLAN	SELCOPY Debug application DB2 PLAN name.	X	-
DB2.PLAN1	SELCOPY/i DB2 utilities PLAN name.	X	-
DB2.SELECTLIMIT	SELCOPY/i DB2 SQL execution SELECT limit.	X	X
DB2.SSN	SELCOPY/i DB2 default Sub-System Name.	X	X
DLI.ACBLIB	SELCOPY Debug application default IMS/DL1 ACB library.	X	X
DLI.DBDLIB	SELCOPY Debug application default IMS/DL1 DBD library.	X	X
DLI.PSBLIB	SELCOPY Debug application default IMS/DL1 PSB library.	X	X
DLI.RESLIB	SELCOPY Debug application default IMS/DL1 RESL library.	X	X
EDIT.DEFPROFILE	Text editor profile macro default name.	X	X
EDIT.DISTMACROS	Text editor CBL distributed macros library name.	X	-
EDIT.INITIALPOS	Text editor frame window initial position.	X	X
EDIT.INITIALSIZE	Text editor frame window initial size.	X	X
EDIT.INSTANCE	Text editor instances.	X	X
EDIT.INTERFACE	Text editor default edit interface.	X	X
EDIT.LOADWARNING	Text editor file data load warning threshold.	X	X
EDIT.MACROPATH	Text editor macro library search path.	X	X
EDIT.PFnn	Text editor CBLE interface non-keylist key definitions.	X	X
EDIT.SITEMACROS	Text editor installation common macros library name.	X	-
EDIT.SIZEWARNING	Text editor file size warning threshold.	X	X
EDIT.USESDNPREFIX	Text editor implied data set prefix use.	X	X
EDIT.USERMACROS	Text editor user macros library name.	-	X
HELP.DEFAULTPATH	Help members library name.	X	-
IPO.COMMENT1	IPO panel comment text type 1 style definition.	X	X
IPO.COMMENT2	IPO panel comment text type 2 style definition.	X	X
IPO.PANELPATH	IPO panel members library search path.	X	-
IPO.PROCPATH	IPO panel REXX procedures library search path.	X	-
IPO.PROMPT1	IPO panel field prompt text type 1 style definition.	X	X
IPO.PROMPT2	IPO panel field prompt text type 2 style definition.	X	X
IPO.INPUT1	IPO panel input field text type 1 style definition.	X	X
IPO.INPUT2	IPO panel input field text type 2 style definition.	X	X
IPO.OUTPUT1	IPO panel output field text type 1 style definition.	X	X
IPO.OUTPUT2	IPO panel output field text type 2 style definition.	X	X
IPO.BUTTON1	IPO panel selection button style definition.	X	X
IPO.RADIO1	IPO panel radio button type 1 style definition.	X	X
IPO.RADIO2	IPO panel radio button type 2 style definition.	X	X
IPO.TABLE1	IPO panel table data type 1 style definition.	X	X
IPO.TABLE2	IPO panel table data type 2 style definition.	X	X
ISPF.INITIALSIZE	ISPF environment 3270 I/O management.	X	X

ISPFEDIT.PFnn	Text editor ISPF interface non-keylist key definitions.	X	X
RACF.CBLVCAT	ACF resource name for CBLVCAT Interactive access.	X	-
RACF.DB2	ACF resource name for SELCOPY/i DB2 access.	X	-
RACF.RESOURCECHECK	ACF resource access checking activation.	X	-
RACF.RESOURCECLASS	ACF resource class name.	X	-
RACF.SUPPRESSWTO	ACF resource check failure console message suppression.	X	-
RACF.SYSTEM	ACF resource name for System window access.	X	-
RACF.SELCOPY	ACF resource name for SELCOPY debug access.	X	-
RACF.USERTSO	ACF resource name for SELCOPY/i TSO startup.	X	-
RACF.USERVTAM	ACF resource name for SELCOPY/i VTAM startup.	X	-
SDE.AUXDSNPREFIX	Data Editor auxiliary data set name prefix.	X	X
SDE.COBOLCOMPILER	Data Editor COBOL compiler program DSN.	X	-
SDE.LOADWARNING	Data editor file data load warning threshold.	X	X
SDE.MAXCOBOLRC	Data editor COBOL compiler maximum tolerated return code.	X	X
SDE.MAXPL1RC	Data editor PL1 compiler maximum tolerated return code.	X	X
SDE.MAXSTOR	Data editor maximum storage allocated for single file edit.	X	X
SDE.PL1COMPILER	Data Editor PL1 compiler program DSN.	X	-
SELCOPY.INITIALPOS	SELCOPY Debug frame window initial position.	X	X
SELCOPY.INITIALSIZE	SELCOPY Debug frame window initial size.	X	X
SELCOPY.LOOPBREAKIN	SELCOPY Debug loop iteration count implied break	X	X
SELCOPY.PROGRAMNAME	SELCOPY program (module) name.	X	X
SYSTEM.ABENDTRAP	SELCOPY/i dump management activation.	X	-
SYSTEM.CBLIREL	Record of latest SELCOPY/i release started by the user.	-	X
SYSTEM.CMDLINE	Location of command prompt field.	X	X
SYSTEM.CMDTEXT	Location command centre (CMX) file.	X	X
SYSTEM.COMMANDDELIMITER	Command string delimiter character.	X	X
SYSTEM.DUMPDSNPREFIX	SELCOPY/i dump management DSN prefix.	X	X
SYSTEM.INITIALSIZE	Initial window format maximised activation.	X	X
SYSTEM.ISPFSDF	ISPF primary option panel command or menu path for SDSF.	X	-
SYSTEM.LISTFILEACTION	Default action of Enter key in file list windows.	X	X
SYSTEM.LISTMAXKB	Maximum storage allocated to lists.	X	X
SYSTEM.MENUTAB	Tabbable menu bar items activation.	X	X
SYSTEM.PFnn	General SELCOPY/i non-keylist key definitions.	X	X
SYSTEM.SCROLLBARS	Window scroll bar display activation.	X	X
SYSTEM.SINGLEUSER	SELCOPY/i VTAM single user logon activation.	X	-
SYSTEM.SITEDSNPREFIX	DSN prefix for all SELCOPY/i system data sets.	X	-
SYSTEM.STEPLIB	JCL STEPLIB library for SELCOPY/i batch jobs.	X	-
SYSTEM.SYSIREL	Record of installed SELCOPY/i release.	X	-
SYSTEM.TRUSTEDUSERS	User verification activation for systems without ACF.	X	-
SYSTEM.TRUST-userid	User verification userid and password.	X	-
SYSTEM.USERDSNPREFIX	DSN prefix for all SELCOPY/i generated user data sets.	-	X
SYSTEM.USERINIFILE	DDNAME/DSN template of each user's personal user INI file.	X	-
SYSTEM.VSESMLOGON	VSE Security Manager resource checking activation.	X	-
TABLES.DISTTABLES	Product common SELCOPY/i system table library name.	X	-
TABLES.SITETABLES	Shared installation SELCOPY/i table library name.	X	-
TABLES.USERTABLES	Private user SELCOPY/i table library name.	-	X
TRACE.DATASET	SELCOPY/i diagnostic trace output.	X	X
TRACE.PROGRAM	SELCOPY/i diagnostic trace program name.	X	X
TRACE.VTAM3270IO	SELCOPY/i VTAM diagnostic trace include 3270 I/O.	X	-

System INI Options

The following INI options are applicable to the SELCOPY/i System INI file only. They are grouped by their first level variable names (specified in parentheses.)

(COBOLREPLACE) - z/OS Systems Only.

The COBOLREPLACE variables are used solely by the SELCOPY/i Structured Data Editor (SDE) when compiling COBOL source copy books to generate a SELCOPY/i SDE internal structure object (SDO).

nnFR and **nnTO** (*nn*=01 to 99) are corresponding variables so that **01FR** corresponds with **01TO**, **02FR** with **02TO**, etc.

Together the **nnFR** and corresponding **nnTO** variables generate a COBOL REPLACE statement which gets inserted in the temporary source member used by SELCOPY/i as input to the COBOL compiler. Therefore, the REPLACE statement is applied to all copy books selected for compilation. The generated COBOL statement is of the form:

```
REPLACE ==pseudo-text-nnFR== BY ==pseudo-text-nnTO== ... .
```

Up to 99 pairs of *pseudo-text-**nn*** replacements may be defined and are appended to the REPLACE statement in ascending order of value *nn*. If no corresponding **nnTO** variable exists for **nnFR**, or vice versa, then the variable is ignored.

COBOLREPLACE variables in the System INI file are system-wide and so the generated REPLACE statement is used on all SELCOPY/i SDE COBOL copy book compilations performed by any user. An additional, user specific REPLACE statement may be generated if the user has configured COBOL REPLACE parameters via the SELCOPY/i Settings panels. This may be used to override replacement pairs generated by the system-wide REPLACE statement.

See IBM publication "*Enterprise COBOL for z/OS Language Reference*" for valid REPLACE *pseudo-text* specification.

nnFR=*pseudo-text-1*
Specifies a *pseudo-text* source string to be replaced.

nnTO=*pseudo-text-2*
Specifies a *pseudo-text* replacement string.

(EDIT)

DistMacros=*libname*
Defines the SELCOPY Product Suite PDS/PDSE install library containing the distributed SELCOPY/i text edit macros. (e.g. CBL.SZZSDIST.CBLE) This library should be accessible by all users.

This option is set by the FIRSTUSE utility when executed by the installer with parameter, SITE, and is also referenced in the generated System INI file EDIT.MacroPath variable.

SiteMacros=*libname*
Defines the SELCOPY/i text edit macro library which contains macros that have been developed at this installation and made commonly available to all users. This library should be accessible by all users.

This option is set and, if necessary, the library allocated, by the FIRSTUSE utility when executed by the installer with parameter, SITE. It is also referenced in the generated System INI file EDIT.MacroPath variable.

(RACF) - z/OS Systems Only.

ResourceCheck=NO|YES
Use z/OS RACF, or equivalent security package, for SELCOPY/i resource access checking. Default is NO.

SuppressWTO=NO|YES
For SELCOPY/i resource access checking, SuppressWTO controls whether access failure messages written to the console are to be suppressed. Default is NO.

ResourceClass=*class_name*
For SELCOPY/i resource access checking, ResourceClass specifies the z/OS RACF, or equivalent, general resource class. Default is **FACILITY**.

System=*resource_name*
For SELCOPY/i resource access checking, specifies the z/OS RACF, or equivalent, resource name to be applied when an attempt is made to open a SELCOPY/i System window either via the drop down menus or the CLI command interface. Default is **CBLI.SYSTEM**.

The resource name must first be defined to the resource class specified in the ResourceClass option.

UserTSO=*resource_name*

For SELCOPY/i resource access checking, specifies the z/OS RACF, or equivalent, resource name to be applied when an attempt is made to start SELCOPY/i in a TSO environment. Default is **CBLI.USER.TSO**.

The resource name must first be defined to the resource class specified in the ResourceClass option.

UserVTAM=*resource_name*

For SELCOPY/i resource access checking, specifies the z/OS RACF, or equivalent, resource name to be applied when an attempt is made to logon to SELCOPY/i in a VTAM environment. Default is **CBLI.USER.VTAM**.

The resource name must first be defined to the resource class specified in the ResourceClass option.

SELCOPY=*resource_name*

For SELCOPY/i resource access checking, specifies the z/OS RACF, or equivalent, resource name to be applied when an attempt is made to start SELCOPY Interactive either via the drop down menus or the CLI command interface. Default is **CBLI.SELCOPY**.

The resource name must first be defined to the resource class specified in the ResourceClass option.

CBLVCAT=*resource_name*

For SELCOPY/i resource access checking, specifies the z/OS RACF, or equivalent, resource name to be applied when an attempt is made to start CBLVCAT Interactive either via the drop down menus or the CLI command interface. Default is **CBLI.CBLVCAT**.

The resource name must first be defined to the resource class specified in the ResourceClass option.

DB2=*resource_name*

For SELCOPY/i resource access checking, specifies the z/OS RACF, or equivalent, resource name to be applied when an attempt is made to start the DB2 SQL Window either via the drop down menus or the CLI command interface. Default is **CBLI.DB2**.

The resource name must first be defined to the resource class specified in the ResourceClass option.

(SYSTEM)**AbendTrap**=ON|OFF

For diagnostic purposes only, should a Program Check or Abend occur whilst running SELCOPY/i, AbendTrap determines whether control is passed to the SELCOPY/i abend handler (AbendTrap=ON) or back to the operating system (AbendTrap=OFF).

Default value is ON.

ISPFSDSF=*cmd*

Defines the ISPF command or menu path that may be entered by the user at the ISPF Primary Menu command line, in order to start the SDSF, or equivalent, product.

This option is set by the FIRSTUSE utility when executed by the installer with parameter, SITE.

This value is used by SELCOPY/i functions and macros (e.g. OQ and OP) in order to display the JES output queue and, if authorised, the operator console log.

SingleUser=ON|OFF

For SELCOPY/i VTAM execution in z/OS or z/VSE only, indicates whether or not the application will support only a single user logon.

SiteDSNPrefix=*prefix*

Defines a character string which represents the DSN prefix of the SELCOPY Product Suite install libraries and data sets.

This option is set by the FIRSTUSE utility when executed by the installer with parameter, SITE.

Its value is also defined to the edit environment variable %SitePfx%. This variable is used in the generated CMX files to reference sample jobs and data.

STEPLIB=*library*

For z/OS environments only, identifies the SELCOPY Product Suite PDS/PDSE install load library containing the SELCOPY/i batch program (SDEAMAIN).

If this option is set, a STEPLIB control statement is included with its specified library DSN for all SELCOPY/i generated JCL job streams.

Sysirel=*n.nn*

Not intended to be updated manually, SYSIREL is defined in the System INI file and specifies the release of the operational SELCOPY/i.

This option is updated automatically by the SELCOPY/i session on detecting a new release of the software and is used to trigger new feature updates to the system INI file.

TrustedUsers=YES|NO

Controls whether the trusted user mechanism is to be activated in order to apply a basic level of security on systems without security management software. (Usually VSE systems without BSM/ESM active).

Default value is NO.

Only userids referenced by a **Trust-userid=password** entry will be eligible to logon to SELCOPY/i. For VSE systems with no security manager software, trusted users have unrestricted access to VSE resources including display of non-password protected POWER queue entries.

Trust-userid=password

Specifies a single *userid* and *password* for trusted user logon. A separate **Trust-userid=password** entry must be used for each trusted user.

TrustedUsers=YES must be specified to activate the trusted user mechanism.

UserINIFile=DSNmask|ddname

For z/OS environments only, **UserINIFile** may be specified to define a DSN mask or DDNAME for the user's personal SELCOPY/i User INI file. This option will override SELCOPY/i's default method of identifying the SELCOPY/i User INI file.

Note that *UserINIFile* is one of the INI variables set by the FIRSTUSE utility when executed by the installer with operand SITE, and should not be changed manually unless absolutely necessary.

To ensure a DSN mask specification references a DSN which is unique to each user, it **must** include the variable **%USER%** and may include z/OS system symbols specified within percent signs (%). **%USER%** denote the user's TSO or SELCOPY/i logon userid. e.g.

```
UserINIFile=%&SYSNAME%.DEV.%USER%.SELCOPYI.INI
```

If a DDNAME is specified, then you must ensure that the DDNAME will be allocated to the user's INI file before the user attempts to start or logon to SELCOPY/i.
e.g. In TSO (ISPF), this may be done via a startup REXX exec which is unique to each user and executed when the user logs on to TSO.

VSESMLogon=YES|NO

For VSE environments only, activates or deactivates VSE Security Manager logon (BSM or ESM). If activated, resource access imposed by the security manager are applied to users logged on to SELCOPY/i.

Default value is YES.

(TABLES)**DistTables=libname**

Defines the SELCOPY Product Suite PDS/PDSE install library containing the distributed SELCOPY/i tables. (e.g. CBL.SZZSDIST.TLIB) This library should be accessible by all users.

This is one of the INI variables set by the FIRSTUSE utility when executed by the installer with operand SITE.

SiteTables=libname

Defines the SELCOPY/i table library which contains tables that have been configured at this installation and made commonly available to all users. This library should be accessible by all users.

This option is set and, if necessary, the library allocated, by the FIRSTUSE utility when executed by the installer with operand SITE.

System & User INI Options

Any variable name/value combination, that obeys the standards for INI file option definition, may be assigned within the System and User INI files.

SELCOPY/i recognises and then uses certain standard INI options for its different supported features. Some are assigned by the SELCOPY/i program and are considered to be non-customisable, while other standard INI options may be customised to meet installation and/or user specific preferences.

Non-Customisable SELCOPY/i INI Options

Options in the User INI file, that have one of the following first level variable names, are non-customisable options and are set by SELCOPY/i during the course of the session to maintain the user's panel/list selections across SELCOPY/i sessions:

APF	APF List Window Fields.
DIALOG	Miscellaneous Dialog Panel Fields.
FAV	Favourites Panel Fields.
FILEUTIL	File Utilities Menu Fields.
FSU	FSU Panel Fields.
GRSQREC	SELECT, SORT, WHERE for Enqueues List Windows.
IOSxxx	SELECT, SORT, WHERE for Individual File & SYSPRINT Output List Windows.
LISTFILE	Miscellaneous List Window Fields.
LLL	Link List Window Fields.
LPA	LPA List Window Fields.
SDE	SDE Dialog Panel Fields. ("X" or "Z" prefixed second level variable names only.)
SDEUTIL	SDE Utilities Menu Fields.
ZZS*	ZZS prefixed options relate to SELCOPY/i Panels.

Customisable SELCOPY/i INI Options

The following standard, customisable INI options are applicable to both the SELCOPY/i System and User INI files. They are grouped by their first level variable names (specified in parentheses.)

If any of these options are specified in both the System and User INI files, then the option value specified in the User INI file will take precedence.

(CBLVCAT)

DefaultCommand=(<) (*SELCOPY/i VCAT CLI command input*)

Specifies the CBLVCAT Interactive input parameters to be used when the CBLVCAT Interactive window is opened with no parameters.

The syntax is the same as that specified on a SELCOPY/i CLI VCAT command. i.e. any valid CBLVCAT syntax or input via a control file e.g. "< cbl.ssc.ctl(report1)".

If the input parameters are prefixed by "<" (less than), the command is actioned immediately when the window is opened. Otherwise, the command is simply placed at the VCAT Command prompt for edit.

The default action, when no parameters are specified and no CBLVCAT.DEFAULTCOMMAND is set, is to place the following command string at the VCAT Command prompt:

```
REPORT VCAT DSN TYPE VOL2 !LISTCAT TYPE=U REF=your.master.catalog
```

This will generate a report that lists all user catalogs in the master catalog.

ProgramName=*name*

The name of the CBLVCAT load module to be loaded to execute CBLVCAT interactively.

Default value is CBLV.

SVC=*nnn*

For z/OS systems only, defines the number of the CBLVCAT Interactive SVC which is used specifically to open an ICF catalog in order to generate CBLVCAT's catalog contents report. This SVC is required only if SELCOPY/i is non APF-authorized.

During the install of CBLVCAT, the installer is prompted to apply USERMOD RX00002 to Link Edit this SVC and update the SVC/ESR SELCOPY/i INI variables.

Default value is 109 which is the z/OS extended router SVC. See *ESR* below.

ESR=nnn

For z/OS systems only, the CBLVCAT extended SVC routing code number. Required if SVC=109 is set.

Default value is 222.

(COBOLREPLACE) - z/OS Systems Only.

The COBOLREPLACE variables are used solely by the SELCOPY/i Structured Data Editor (SDE) when compiling COBOL source copy books to generate a SELCOPY/i SDE internal structure object (SDO).

See COBOLREPLACE for **System INI options** for description of COBOLREPLACE variables and their usage.

Unlike COBOLREPLACE options specified in the System INI file, the User INI file supports up to 12 pairs of *pseudo-text-**nnFR**/pseudo-text-**nnTO*** replacement combinations.

(DB2) - z/OS Systems Only.**Exec=IMMEDIATE|DELAY**

Defines the default action for the -EXEC parameter of the SELCOPY/i SQL command.

IMMEDIATE indicates that the SQL command is executed immediately when the Dynamic SQL window is opened, *DELAY* indicates that the SQL command is simply placed on the SQL statement command line.

The default is IMMEDIATE.

Plan=planame

Defines the name that was used to bind the SELCOPY application plan (supplied as part of the SELCOPY FMID) to the required DB2 subsystems (e.g. CBLPLAN0.) This plan is used by the SELCOPY Debug facility for SELCOPY jobs that execute DB2 SQL.

Although supported in both the SELCOPY/i System and User INI files, this option should be set in the System INI file only. It is one of the INI variables set by the FIRSTUSE utility when executed by the installer with operand SITE.

Plan1=planame

Defines the name that was used to bind the SELCOPY/i application plan to the required DB2 subsystems (e.g. CBLPLAN1.) This plan is used by SELCOPY/i DB2 features.

Although supported in both the SELCOPY/i System and User INI files, this option should be set in the System INI file only. It is one of the INI variables set by the FIRSTUSE utility when executed by the installer with operand SITE.

SelectLimit=n_rows

Defines the default limit for number of rows returned by an SQL SELECT operation.

SSN=ssname

Defines the name of the default DB2 subsystem to which SELCOPY/i will connect when a DB2 Dynamic SQL window is opened.

Although supported in both the SELCOPY/i System and User INI files, this option should be set in the System INI file only. It is one of the INI variables set by the FIRSTUSE utility when executed by the installer with operand SITE.

(DLI) - z/OS Systems Only.**ACBLIB=pdsname**

Defines the name of the IMS/DL1 ACBLIB to be used when running the SELCOPY Interactive Debug facility to execute jobs that access IMS/DL1 databases.

DBDLIB=pdsname

Defines the name of the IMS/DL1 DBDLIB to be used when running the SELCOPY Interactive Debug facility to execute jobs that access IMS/DL1 databases.

PSBLIB=*pdsname*

Defines the name of the IMS/DL1 PSBLIB to be used when running the SELCOPY Interactive Debug facility to execute jobs that access IMS/DL1 databases.

RESLIB=*pdsname*

Defines the name of the IMS/DL1 RESLIB to be used when running the SELCOPY Interactive Debug facility to execute jobs that access IMS/DL1 databases.

(EDIT)**DefProfile**=*macroname*

Defines the name of the macro to be used as the SELCOPY/i text editor default profile macro. This macro is executed every time a new file is loaded into the editor.

This option may be overridden in the current SELCOPY/i session only, using the edit CLI command SET DEFPROFILE. The name of the default profile macro may subsequently be overridden for edit of an individual file by specifying operand NOPROF or PROFILE *macroname* on the EDIT command.

The default profile name is PROFILE.

InitialSize=*rows,cols*

Initial number of rows and columns in the SELCOPY/i text editor MDI parent window.

The default size of the SELCOPY/i text editor MDI parent window is based on the dimensions of the 3270 terminal. If the 3270 terminal width is 80 or less, the SELCOPY/i text editor MDI parent window is opened in a maximised state.

InitialPos=*row,col*

Initial position of the edit main window on the screen (row number and column number within the 3270 terminal display.) InitialPos=1,1 is the top left corner of the display.

The default position of the SELCOPY/i text editor MDI parent window is based on the dimensions of the 3270 terminal. If the 3270 terminal width is 80 or less, the SELCOPY/i text editor MDI parent window is opened in a maximised state.

Instance=SINGLE|MULTIPLE

Allow SELCOPY/i to open multiple instances or only a single instance of the SELCOPY/i text editor.

SINGLE indicates that requests to edit files will open edit views in a single instance of the SELCOPY/i text editor MDI parent window. *MULTIPLE* indicates that requests to edit files that originate from outside an existing instance of the SELCOPY/i text editor, will open a new SELCOPY/i text editor MDI parent window.

This option may be overridden in the current SELCOPY/i session only, using the edit CLI command SET INSTANCE.

Default value is SINGLE.

Interface=ISPF|CBLE

Defines the default SELCOPY/i text editor interface.

The SELCOPY/i text editor supports edit commands supported by the ISPF editor and the CMS XEDIT/Windows KEDIT editors. Some command verbs exist for both editors but can have very different effects (e.g. CHANGE). In these cases, the prevailing SELCOPY/i text edit interface dictates the type of edit that takes precedence.

Interface *ISPF* and *CBLE* indicate that command verbs, screen display scrolling, etc. are to be biased towards ISPF edit or XEDIT/KEDIT format respectively.

This option may be overridden in the current SELCOPY/i session only, using the edit CLI command SET INTERFACE.

For z/OS systems the default is *ISPF*, for CMS and VSE systems the default is *CBLE*.

LoadWarning=*integer*|*integerK*|*integerM*

Defines an integer value which is the number of file bytes loaded threshold factor.

During load of a file for text edit, if the number of bytes loaded exceeds a factor of the loadwarning threshold, then a popup message window is displayed prompting the user to continue or cancel the file load.

This option may be overridden in the current SELCOPY/i session only, using the edit CLI command SET LOADWARNING.

This value can be specified as a number of bytes (*integer*), a number of kilobytes (*integerK*) or a number of megabytes (*integerM*).

The default value is 1M (one megabyte).

MacroPath=*pathname1 pathname2 ... pathnameN*

Library search path for SELCOPY/i text editor macros.

Note that this option is configured for the System and User INI files by the FIRSTUSE utility and should not be changed manually unless absolutely necessary.

pathname1, *pathname2*, etc. are tokens (containing no blanks, commas or semi-colons) representing elements of the macro path. The meaning and format of these elements vary depending on the operating system. Each macro path element may be separated by blanks, commas or semi-colons.

Whether set in the SELCOPY/i INI file or with the SET MACROPath command a maximum of 15 macro path tokens is currently supported.

If a macro path is specified in the SELCOPY/i User INI file then it replaces any macro path defined in the SELCOPY/i System INI file (i.e. SELCOPY/i User and System INI file defined macro paths are **not** concatenated).

Rules for MACROPATH vary depending on the operating system as follow:

z/OS

The macro path is a list of PDS/PDSE libraries that must exist at the time the macro path is defined. These libraries are dynamically concatenated and opened when the MACROPATH command is executed, therefore, they must also have the same RECFM. If RECFM=F, then LRECL must also be the same.

There is no default. If no macro path is given then no implicit macros can be executed (though immediate, in-storage or full file name macros can be defined and executed).

z/OS SELCOPY/i INI file example:

```
MacroPath=USER.CBLEEDIT.MACROS; SYSTEM.CBLEEDIT.MACROS
```

CMS

The macro path is a list of file types and optional file modes. If given, the file mode must be separated from the file type with a period/dot (.).

For example, to search for a SELCOPY/i text editor macro name match on files on the B disk with file type of EDITMAC, then the macro path should include EDITMAC.B.

If no macro path is specified in either the USER or SYSTEM SELCOPY/i INI files or via a SET MACROPath command, then the default is to search all accessed disks for files with file name equal to the given macro name and file types as follows (in order):

1. CBLE
2. CBLEEDIT
3. XEDIT

If a macro path is specified, then only files with the specified file types and file modes will be recognised as edit macros.

CMS SELCOPY/i INI file example:

```
MacroPath=CBLETEST.A, CBLE.*, CBLEEDIT
```

VSE

The macro path is a list of LIBR sub-libraries and/or LIBR chain (LIBDEF) names. The sub-libraries must exist, but the chain names are not checked.

If no macro path is specified in either of the SELCOPY/i User or System INI files or via a SET MACROPath command, then the default is the LIBR PROC LIBDEF chain. If a macro path is specified the PROC LIBDEF chain is **not** searched unless explicitly named in the macro path.

Members are searched for with the following member types (in this order):

1. CBLE
2. CBLEEDIT
3. XEDIT

VSE SELCOPY/i INI file example:

```
MacroPath=LIB.USER LIB1.SYS LIB2.SYS PROC
```

PFnn=cmd

Where *nn* can be 01-24 (PF1 - PF9 also supported). Set the default PFkeys for all SELCOPY/i text edit views operating with INTERFACE=CBLE mode.

This option may be overridden in the current SELCOPY/i session only, using the edit CLI command SET PFKEY.

The following are the defaults set by the program:

PF1	SOS LINEADD
PF2	DUPLICATE
PF3	QUIT
PF4	CMDTEXT
PF5	MACRO BLOCK UP MAJOR

PF6	MACRO BLOCK DOWN MAJOR
PF7	BACKWARD
PF8	FORWARD
PF9	MDINEXT
PF10	LEFT HALF
PF11	RIGHT HALF
PF12	RETRIEVE -
PF13	SOS LINEDEL
PF14	SPLTJOIN
PF15	MARK BOX
PF16	MARK LINE
PF17	ECOMMAND COPY BLOCK
PF18	ECOMMAND MOVE BLOCK
PF19	ECOMMAND DELETE BLOCK
PF20	OVERLAYBOX
PF21	PREVMAINWINDOW
PF22	UNDO
PF23	REDO
PF24	ECOMMAND RESET BLOCK

SizeWarning=*integer*|*integerK*|*integerM*

The maximum size (number of bytes) of a file that may be opened by the SELCOPY/i text editor without triggering the file size warning popup window. This option applies only to files where the size may be determined prior to its load into storage.

The file size warning window prompts the user for the next course of action which includes use of the SELCOPY/i Structured Data Editor (SDE) to edit the file. Use of SDE will enable edit/browse of a file that is too large to be entirely loaded in the available address space. (e.g. The user's TSO region size.)

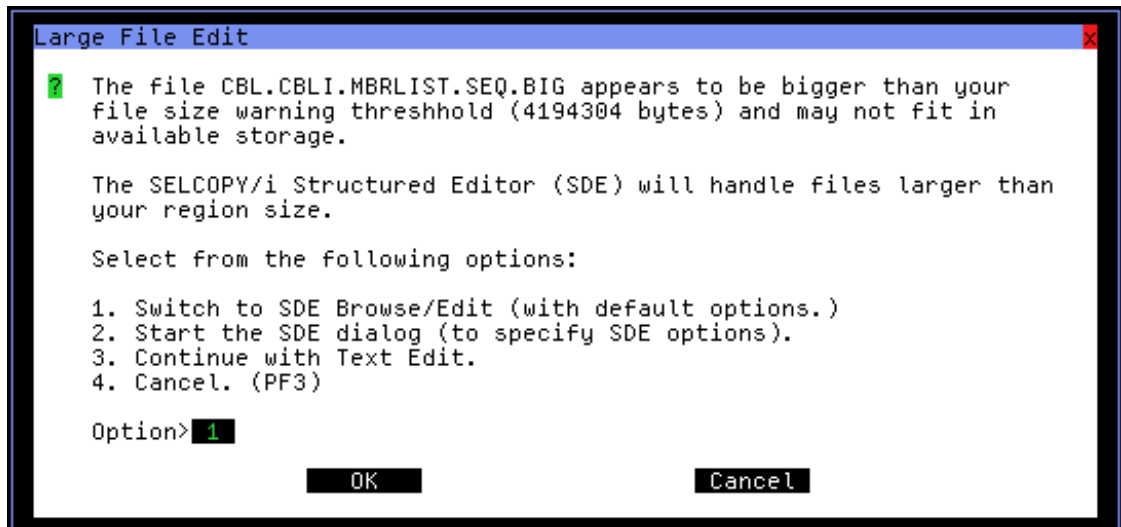


Figure 5. Large File Edit.

This option may be overridden in the current SELCOPY/i session only, using the edit CLI command SET SIZEWARNING.

The size warning value can be specified as a number of bytes (*integer*), a number of kilobytes (*integerK*) or a number of megabytes (*integerM*).

The default value is 1M (one megabyte).

UseDSNPrefix=YES|NO

For z/OS systems only, defines whether a prefix is used when an unquoted data set name is specified on an EDIT or VIEW SELCOPY/i text edit command.

If operating in a TSO (ISPF) environment, the DSN prefix is the TSO prefix as defined in the user's TSO profile, otherwise it is the user's SELCOPY/i logon id.

If set to YES, then where the DSN is specified within apostrophes(') or quotation marks ("), no DSN prefix is used.

Default value is NO.

UserMacros=*libname*

Defines the user's personal SELCOPY/i text edit macro library.

Unless otherwise set by the user via the Settings panel, this option is assigned a library name which is derived from the **SYSTEM.USERDSNPREFIX** option and, if necessary, is allocated the first time the user starts SELCOPY/i.

(HELP)

DefaultPath=*pathname*

For z/OS and VSE systems only, this option defines the default library containing the SELCOPY/i help files.

Although supported in both the SELCOPY/i System and User INI files, this option should be set in the System INI file only. It is one of the INI variables set by the FIRSTUSE utility when executed by the installer with operand SITE.

For VSE systems, *pathname* is the name of a LIBR sub-library. For z/OS systems, it is the DSN of a PDS/PDSE library with a low level qualifier "HTML", but with ".HTML" omitted. e.g. If the PDS/PDSE SELCOPY/i help library DSN is CBL.SZZSHELP.HTML, then this option should be set as follows:

```
DefaultPath=CBL.SZZSHELP
```

(IPO)

PanelPath=*pathname1 pathname2 ... pathnameN*

For z/OS systems only, this option defines the library search path for SELCOPY/i XML panels.

pathname1, *pathname2*, etc. are tokens (containing no blanks, commas or semi-colons) representing elements of the macro path. The meaning and format of these elements vary depending on the operating system. Each macro path element may be separated by blanks, commas or semi-colons.

This path must contain the CBL supplied SELCOPY/i Panel library (CBL.SZZSDIST.IPO). This is one of the INI variables set by the FIRSTUSE utility when executed by the installer with operand SITE.

```
PanelPath=CBL.SZZSDIST.IPO
```

ProcPath=*pathname1 pathname2 ... pathnameN*

For z/OS systems only, this option defines the library search path for SELCOPY/i panel procedures.

pathname1, *pathname2*, etc. are tokens (containing no blanks, commas or semi-colons) representing elements of the macro path. The meaning and format of these elements vary depending on the operating system. Each macro path element may be separated by blanks, commas or semi-colons.

This path must contain the CBL supplied SELCOPY/i Panel Procedures library (CBL.SZZSDIST.IPOPROC). This is one of the INI variables set by the FIRSTUSE utility when executed by the installer with operand SITE.

```
ProcPath=CBL.SZZSDIST.IPOPROC
```

(ISPF) - z/OS Systems Only.

InitialState=ON|OFF

For TSO ISPF environments only, this option defines whether 3270 I/O is performed by ISPF or TSO.

When set to *OFF*, native TSO 3270 screen management I/O is used.

Although ISPF 3270 screen management I/O is less efficient, its use enables the user to take advantage of ISPF screen splitting, etc. In order to do this without disrupting PFkey assignments, SELCOPY/i must run as an ISPF application with applid CBLI.

The 3270 I/O environment used may be overridden in the current SELCOPY/i session only, using the CLI command, ISPF.

Default value is ON - use ISPF 3270 screen management I/O.

(ISPFEDIT) - z/OS Systems Only.

PFnn=*cmd*

Where *nn* can be 01-24 (PF1 - PF9 also supported). Set the default PFkeys for all SELCOPY/i text edit views operating with INTERFACE=ISPF mode.

The following are the defaults set by the program:

PF1	SOS LINEADD
PF2	DUPLICATE
PF3	END
PF4	CMDTEXT
PF5	RFIND
PF6	RCHANGE
PF7	UP
PF8	DOWN
PF9	MDINEXT
PF10	LEFT
PF11	RIGHT
PF12	RETRIEVE -
PF13	SOS LINEDEL
PF14	SPLITJOIN
PF15	MARK BOX
PF16	MARK LINE
PF17	ECOMMAND COPY BLOCK
PF18	ECOMMAND MOVE BLOCK
PF19	ECOMMAND DELETE BLOCK
PF20	OVERLAYBOX
PF21	PREVMAINWINDOW
PF22	UNDO
PF23	REDO
PF24	ECOMMAND RESET BLOCK

(SDE) - z/OS Systems Only.

AuxDSNPrefix=*prefix*

Defines the dataset name prefix (maximum length 26) to be used by SELCOPY/i SDE when allocating a default Auxiliary Edit data set. If prefix exceeds 26 characters, then truncation occurs.

Qualifiers of the form **.Dyyydd.Thhmmssx**, representing the current date and local time, are appended to the dump data set name prefix qualifiers.

This SELCOPY/i INI option may be permanently updated using the SDE CLI command, SET AUXDSNPREFIX.

Default value is %USER%.CBLI.SDEAUX.

COBOLCompiler=*fileid*

Specifies the full DSN and member name of the COBOL Compiler module. e.g. IGY330.SIGYCOMP(IGYCRCTL)

SELCOPY/i SDE will invoke the COBOL compiler if requested to generate an internal SDE structure from a COBOL Copy Book.

Specification of COBOLCompiler is necessary only if your COBOL compiler program module is **not** named IGYCRCTL and is **not** a member of a library within the library search chain.

This SELCOPY/i INI option may be permanently updated using the SDE CLI command, SET COMPILER COBOL.

LoadWarning=*integer*

Defines an integer value which is the number of file records loaded threshold factor. During load of a file from disk for SDE edit or browse, if the number of records loaded exceeds a factor of the SDE loadwarning threshold, then a popup message window is displayed prompting the user to continue or cancel the file load.

If the user chooses to cancel load when prompted, then the records that have already been loaded are displayed in the SDE window view. If the records were loaded for edit, then Update-in-place edit will be used overriding any EDIT REPLACE request for full edit capabilities.

This SELCOPY/i INI option may be permanently updated using the SDE CLI command, SET LOADWARNING.

The default value is 5000 records.

MaxCOBOLRC=*value*

The maximum acceptable COBOL compiler return code for which an SDE structure will be successfully generated.

This value is only applicable to execution of the SDE CLI command, CREATE STRUCTURE, with parameter FROM COBOL *copybook*. Where a COBOL return code greater than the MAXCOBOLRC value occurs, the CREATE STRUCTURE operation fails with an error message.

This SELCOPY/i INI option may be permanently updated using the SDE CLI command, SET MAXCOBOLRC.

The default value is 4.

MaxPL1RC=*value*

The maximum acceptable PL/1 compiler return code for which an SDE structure will be successfully generated.

This value is only applicable to execution of the SDE CLI command, CREATE STRUCTURE, with parameter FROM PL1 *copybook*. Where a PL/1 return code greater than the MAXPL1RC value occurs, the CREATE STRUCTURE operation fails with an error message.

The default value is 4.

This SELCOPY/i INI option may be permanently updated using the SDE CLI command, SET MAXPL1RC.

MaxStor=*integer|integerK|integerM*

Defines an integer value which is the maximum storage available for SDE edit of a single data set.

An SDE edited data set is limited by the lesser of the prevailing MAXSTOR value and the amount of free private area storage above the 16MB line available within the region at the time of open. This limit is used to determine the SDE edit technique and data record management used to edit the data set.

This SELCOPY/i INI option may be updated using the SDE CLI command, SET MAXSTOR.

The *MaxStor* value may be specified as a number of bytes (*integer*), number of kilobytes (*integerK*) or a number of megabytes (*integerM*).

The default value is 0 (unset).

PL1Compiler=*fileid*

Specifies the full DSN and member name of the PL1 Compiler module. e.g. IEL330.SIBMZCMP(IBMZPLI)

SELCOPY/i SDE will invoke the PL1 compiler if requested to generate an internal SDE structure from a PL1 Copy Book.

Specification of PL1Compiler is necessary only if your PL1 compiler program module is **not** named IBMZPLI and is **not** a member of a library within the library search chain.

This SELCOPY/i INI option may be permanently updated using the SDE CLI command, SET COMPILER PL1.

(SELCOPY)**InitialPos=***row,col*

Defines the initial position of the SELCOPY Interactive MDI parent window on the screen (row number and column number within the 3270 terminal display.) InitialPos=1,1 is the top left corner of the display.

The default position of the SELCOPY parent window is based on the dimensions of the 3270 terminal. If the 3270 terminal width is 80 or less, the SELCOPY Interactive MDI parent window is opened in a maximised state.

InitialSize=*rows,cols*

Initial number of rows and columns in the SELCOPY Interactive MDI parent window.

The default size of the SELCOPY parent window is based on the dimensions of the 3270 terminal. If the 3270 terminal width is 80 or less, the SELCOPY Interactive MDI parent window is opened in a maximised state.

LoopBreakIn=*integer*

Defines an integer value which is the loop break-in counter threshold for SELCOPY Interactive.

When the break-in threshold has been reached, a pop-up message window is opened and control is passed back to the user to continue debug investigation. This means that there is no need to forcibly end the SELCOPY/i session in order to restart the SELCOPY debug process that is looping infinitely.

The default value is 1000000.

ProgramName=*modname*

The name of the SELCOPY load module to be used to execute SELCOPY interactively.

Default value is SELCOPY.

(SYSTEM)**CBLIREL=***n.nn*

Not intended to be updated manually, CBLIREL is defined in the User INI file and specifies the release of the operational SELCOPY/i.

This option is updated automatically by the SELCOPY/i session on detecting a new release of the software and is used to trigger new feature updates to the user's HOME CMX file.

CmdLine=TOP|BOTtom

Defines the location of the command line as being at the top or bottom of a window's display.

This option may be overridden in any window within the current SELCOPY/i session only, using the CLI command `COMMANDLINE`, or in an edit window using the edit CLI command `SET CMDLINE`.

Default value is TOP.

CmdText=fileid

The value of this option in the system INI file defines the location of the skeleton command centre (CMX) file from which each user's home command centre (CMX) file is initialised.

For a system INI file in z/OS, it identifies the SELCOPY Product Suite PDS/PDSE install library containing the distributed SELCOPY/i CMX members (e.g. CBL.SZZSDIST.CMX). If a member name is specified, then it will be ignored. In all other systems, it identifies the name of the skeleton command centre (CMX) file.

The value of this option in the user INI file defines the user's default HOME command centre (CMX) file to be displayed when SELCOPY/i is started.

The fileid can be that of a VSE LIBR member or a CMS or z/OS sequential file. z/OS System symbols and the special variable `&USER` or `%USER%` may be included in the fileid. `&USER` and `%USER%` denote the user's login userid. e.g.

```
CmdText=SYS4.&USER.SELCOPYI.CMX
```

CommandDelimiter=char

Defines the command delimiter character used to separate multiple commands on any single, SELCOPY/i command line.

This option may be overridden in the SELCOPY/i text editor within the current SELCOPY/i session only, using the edit CLI command `SET LINEND`.

Default is semi-colon (';' - X'5E') for z/OS, otherwise exclamation mark ('!' - X'5A').

DumpDSNPrefix=prefix

For z/OS systems only, the dataset name prefix (maximum length 26) used to generate a SELCOPY/i dump data set when `AbendTrap=ON` is set. If prefix exceeds 26 characters, then truncation occurs.

Note that `DumpDSNPrefix` is one of the INI variables set by the `FIRSTUSE` utility both when the installer configures the System INI file and again when the User INI file is created by the user during first time startup. This option should not be changed manually unless absolutely necessary. `FIRSTUSE` will also prompt the user to allocate this data set if it does not already exist.

The value of this option in the system INI file is used when no user dump DSN prefix is available. i.e. when `SYSTEM.DUMPDSNPREFIX` is not set in the user's INI file or, for SELCOPY/i VTAM execution, the program check orabend occurs when no current user is established.

Qualifiers of the form `.Dyyyymmdd.Thhmmssx`, representing the current date and local time, are appended to the dump data set name prefix qualifiers.

InitialSize=MAX

Specifies whether all windows in the SELCOPY/i session are to be opened in a maximised state. This may be useful if a small number of rows x columns are available in the user's 3270 terminal.

The default is to open windows in a non-maximised state.

ListFileAction=Browse|Edit|NONE

Sets the default action on hitting <Enter> on an entry in a List window.

For CMS file, VSE LIBR member, z/OS data set, HFS file or PDS(E) member list windows, then `ListFileAction=Browse` or `ListFileAction=Edit` will perform a SELCOPY/i text edit `BROWSE` or `EDIT` command respectively.

`ListFileAction=NONE` indicates that no action is to be taken when <Enter> is hit on a list window entry.

Default value is Edit.

ListMaxKB=integer

Defines an integer value which is the limit for in-storage lists in KiloBytes.

If this option is not set (or not a valid value is set), then no limit is enforced. Note that in-storage lists are used for loading SELCOPY/i text edit REXX macros, therefore, if this limit is set too small some macros may fail to load.

MenuTab=ON|OFF

Defines whether or not the menu bar items, displayed at the top of a SELCOPY/i window, are enterable fields and so are included in cursor positioning via the tab key. Similarly, if `MENUTAB` is set off, the HOME key will position the cursor in the command input field provided this field is located at the top of the SELCOPY/i windows.

PFnn=cmd

Where nn can be 01-24 (PF1 - PF9 also supported). Set the DEFAULT system pf keys which apply to any SELCOPY/i window type.

This option may be overridden in the current SELCOPY/i session only, using the CLI command KEYS.

The following are the defaults set by the program:

PF1	TOP
PF2	BOTTOM
PF3	CLOSE
PF4	CMDTEXT
PF5	RFIND
PF6	
PF7	UP
PF8	DOWN
PF9	NEXTMAINWINDOW
PF10	LEFT
PF11	RIGHT
PF12	RETRIEVE -
PF13	SHOWPOPMENU
PF14	
PF15	
PF16	CMDTEXT EDIT
PF17	
PF18	
PF19	
PF20	
PF21	ISPF SWAP LIST
PF22	
PF23	
PF24	RETRIEVE +

ScrollBars=YES|NO

Controls whether the window system displays scroll bars in scrollable windows.

Default value is NO.

UserDSNPrefix=char

Defines a character string which represents a DSN prefix used by the FIRSTUSE utility to perform its initial customisation of the user's HOME CMX file.

Its value is also defined to the edit environment variable %MyHlq%. This allows the user to reference a user specific, variable DSN prefix in SELCOPY/i text edit macros and commands (e.g. in CMX files) which will be resolved appropriately during execution. e.g.

```
<VIEW %MyHlq%.SYSPR133(XSS24511)
```

This option is updated automatically by the FIRSTUSE utility when creating the User INI file.

(TABLES)**UserTables=libname**

Defines the user's personal SELCOPY/i table library.

This option is set when the user creates a private table (e.g. keylist) and is assigned a library name which is derived from the **SYSTEM.USERDSNPREFIX** option. The library is automatically allocated when the table is defined.

(TRACE)**VTAM3270IO=YES|NO**

Used to provide diagnostic information for SELCOPY/i execution, this option should only be set to YES if asked to do so by CBL Support.

Default value is NO.

Displaying INI Fileids and Options

During the course of the SELCOPY/i session, a user may wish to display the SELCOPY/i INI fileids, the currently assigned options (variable names) and their values.

The following SELCOPY/i text edit command displays the fileids of the active System and User INI files:

```
QUERY INIFILE
```

The following SELCOPY/i text edit command displays all currently assigned INI options and their values:

```
QUERY INIVAR
```

For SELCOPY/i text edit REXX macros, the active INI files and their assignment options may be obtained using the EXTRACT function with arguments INIFILE and INIVAR respectively.

The **QX** SELCOPY/i text edit macro reports values assigned to any extractable setting supported by EXTRACT, and optionally direct the reported values to a text edit view. Therefore, the following may also be used to report all assigned INI file options and output them to an edit view:

```
QX INIVAR EDIT
```

SELCOPY/i INI variables may also be referenced as text edit environment variables from within the SELCOPY/i text editor, by enclosing the variable name in percent symbols (%).

Environment variables are substituted with their equivalent values when used in SELCOPY/i text edit CLI commands executed via the following:

- The SELCOPY/i text edit command line.
- A SELCOPY/i text edit CMX file. (e.g. the HOME CMX file)
- A SELCOPY/i text edit REXX macro.

When referenced as a text edit environment variable, the first qualifier of the INI variable must be the INI file (SYSTEM or USER) in which it has been assigned. e.g To display the value of a specific INI option:

```
<msg %USER.Edit.LoadWarning%
<msg %USER.System.PF12%
<msg %SYSTEM.System.CmdText%
```