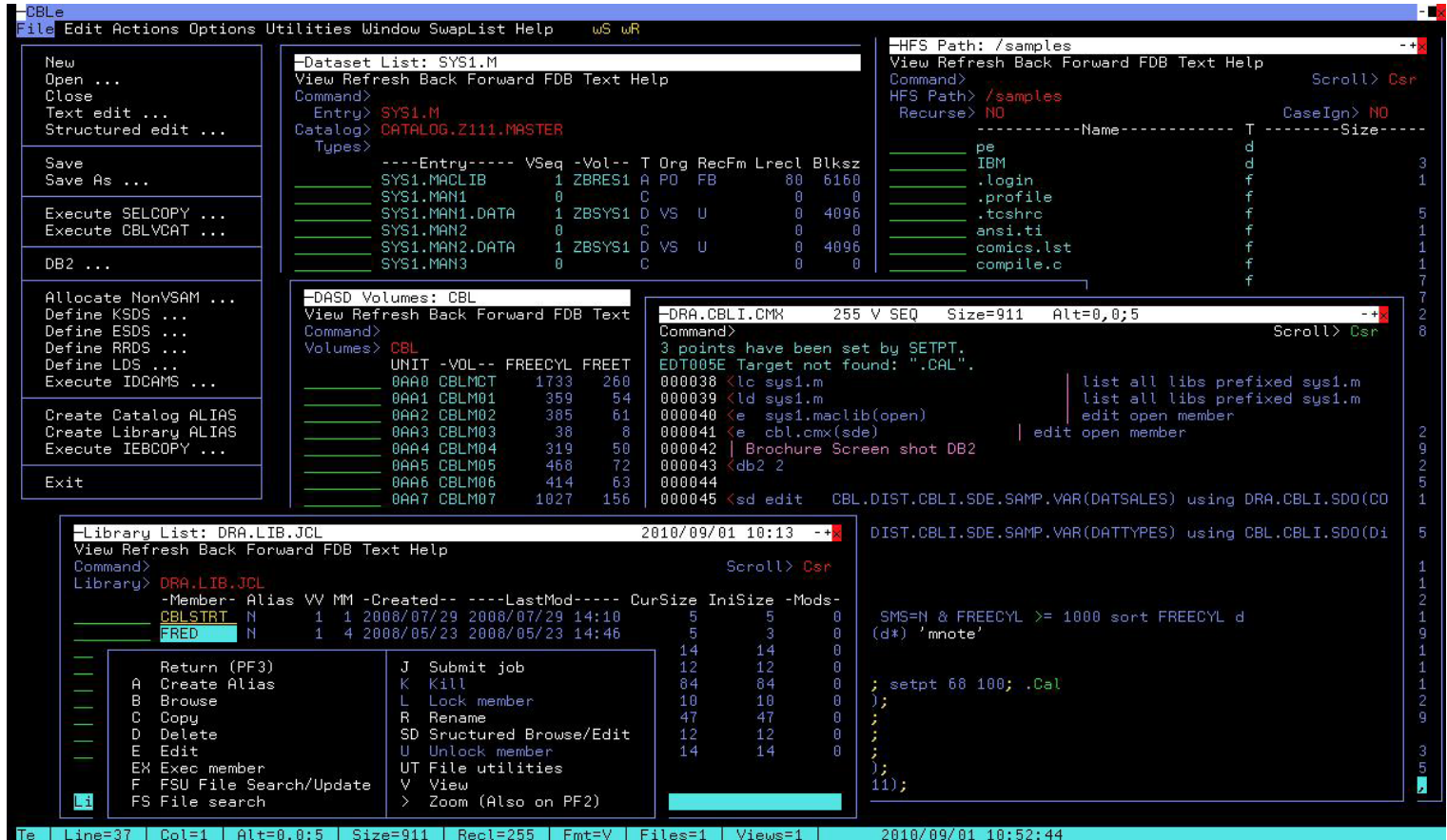




SELCOPY/i - Interactive

The Unique multi-windowed 3270 environment

SELCOPY/i is a Unique Advanced Data Management Tool enabling an enterprise to quickly and easily locate and edit any file on disk to correct invalid data, plus every-day files, like JCL and Source. Major productivity benefits over using ISPF through its intuitive windows style interface, familiar to PC Users.



SELCOPY/i supports both ISPF and **XEDIT functionality** but also contains many unique features, such as drop down menus, list windows, virtually unlimited edit sessions, 64 levels of undo/redo per edit session, cut/paste, line and block copy.

Unique **Point & Shoot Command Centre**, where commands are stored and executed with a single key press. This removes the need for repeated typing of file names and command syntax.

Drop down menus simplify file definition and allocation, DB2, dataset lists and execution of SELCOPY/i built in tools.

List Windows provide an easy interface to work on lists of volumes, datasets, libraries and members. All list windows support sort on headings, selective columns and **filtering** of data to effectively reach the data required.

List windows also support standard ISPF and SELCOPY/i prefix commands. A **single key press** on any window entry will open the entry as a new list or edit if item is a file. Users can effectively **drill down** through the system to locate the file or data they are seeking.

List Windows can be saved as a simple file for future reference or printing.

SELCOPY/i also includes a simple to use **Dynamic SQL** interface to DB2.

All SELCOPY/i windows can be **moved around** the desktop and minimized/maximized to suite the user.

All SELCOPY/i tools can also be invoked from the command line or from a line in the command file.

The output of TSO commands can be **captured in a window** and browsed or edited as a simple file.

An ISPF hot-key is provided for those rare occasions that ISPF is required, or even go to numbered ISPF menu options directly.



SELCOPY/i - File Edit for z/OS

The Unique multi-windowed 3270 environment

Structured Data Edit is provided as a standard feature of SELCOPY/i providing a modern enterprise class editor for very large files using copybook structures. This enables Developers and Application Support staff to make timely and efficient corrections to any business critical enterprise data.

The screenshot displays the SELCOPY/i interface with several windows and panels:

- Main Editor Window:** Shows a record structure for 'REC-CARD' with fields like CUST-ID, SEQ, CR-OR-DR, COMPANY, CARD-NUMB, and PD. It includes a 'List' menu with options like System, Favourites, File Copy, File Search, File Search/Update, Calendar, Calculator, SDSF, and ISPF Dataset Utilities.
- Utility Panels:** 'DASD Volumes ...', 'Cataloged Files ...', 'Library members ...', 'Enqueues ...', and 'Job Enqueues ...'.
- Data Tables:**
 - Table 1 (REC-CARD):** Columns include CUST-ID, SEQ, CR-OR-DR, COMPANY, CARD-NUMB, and PD. Rows show records for 'VISA', 'DELTA', 'Aqua', 'MAST', and 'VISA'.
 - Table 2 (REC-ORDER):** Columns include CUST-ID, ORDER-REF, QTY, ITEM-CODE, UNIT-PRICE, DELIVERY, and ORDER. Rows show various order items with quantities and prices.
 - Table 3 (REC-CUST):** Columns include CUST-ID, FB, AN, and Data. Rows show customer details like 'chico', 'benj', 'marine-boy', and 'revelator'.
- Command Line:** Shows commands like 'Edit CBL.DIST.CBLI.S', 'Command>', and 'Record type: REC-CUST'.
- Status Bar:** Displays 'Se | Line=5 | Col=1 | Alt=0,0;0 | Size=63 | Recl=16384 | Fmt=V | Files=1 | Views=3 | 2010/08/31 11:34:48'.

Designed for Development staff to resolve production problems quickly in both interactive edit and through the SELCOPY batch interface.

Quickly and easily edit any file on disk regardless of region or file size using a COBOL or PL1 copybook.

Open multiple views of the same data and view multiple record types concurrently, Zoom into a single record as a vertical view of the

Multiple single record views may be opened concurrently to compare the entries.

Structured Data Edit provides users with the tools to make interactive changes to data and generate test data in VSAM, SEQ and PDS(e) files, with the minimum of effort.

Isolate any records/fields with sophisticated SQL like SELECT and WHERE sub commands.

Easily switch between different data views and save the select statement in the command file for future execution.

The CBL Structured Language enables file structures to be created for a file with no copybook available.

FSU (File, Search & Update) makes it easy for a developer to identify global changes that would occur, before actioning them if all is ok. He can even UNDO it using the audit trail, if afterwards it proves to have been a mistake.

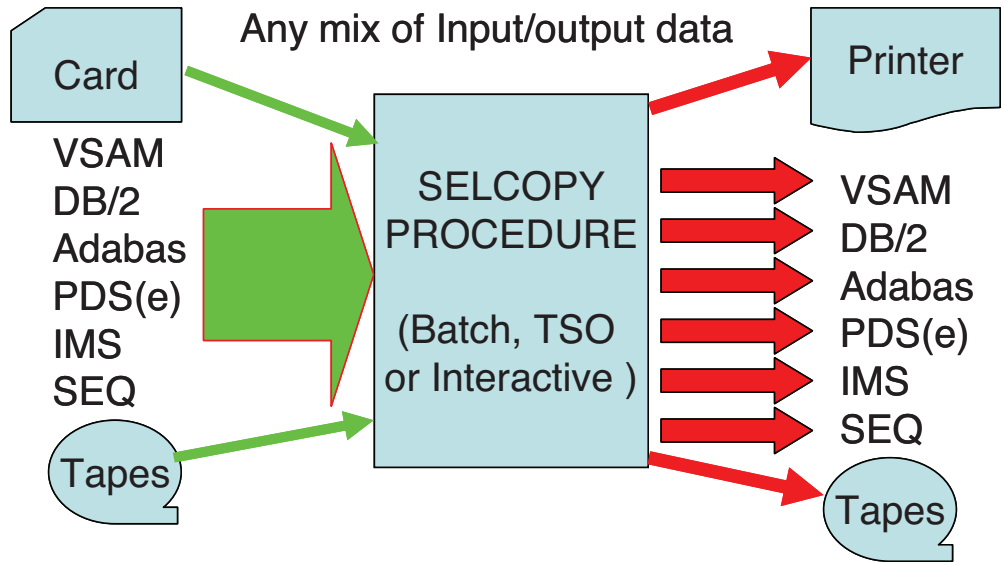
HFS/zFS file systems are viewed in an explorer style window, complete with standard point & click access to drill down through the directory structure and edit a file.

A command line interface is also available to manage the HFS/zFS files and directories.



SELCOPY/i - Batch

Multiple Information Retrieval, Manipulation & Update



RELIABILITY

SELCOPY has gained an enviable reputation with customers as a reliable programming tool, for production procedures and for quick fixes. SELCOPY can get you out of trouble fast.

PLATFORM SUPPORT

SELCOPY is available for all mainframe environments. SELCOPY is also available on other platforms (UNIX, iSeries and Windows). Non-mainframe versions can all read and write exported binary format native mainframe files.

INTERACTIVE

SELCOPY batch is included with the SELCOPY/i interactive environment.

PORTABILITY

Common syntax is used across all platforms, so code can be easily ported with little or no changes.

CONTACT

Compute (Bridgend) Ltd
8 Merthyr Mawr Road,
BRIDGEND, CF31 3NH
+44 (0)1656 652222
www.cbl.com

SELCOPY requires no compiling and is much easier to code than compiled languages such as COBOL, PL1 and C++, while executing at comparable speeds.

Read data from any mix of input data into any mix of output data in a single run. e.g. IMS to DB2.

READ, INSERT, DELETE and UPDATE DB/2 database tables. Dynamically generate and execute SQL statements.

Full VSAM support for update in place, keyed read, sequential (forwards/backwards), insert and delete.

Selectively update DB2 tables based on input data from other sources. Read and Write data on DB2, IMS, DL1 and ADABAS databases and produce reports.

Manipulate data down to the bit level, process Char/Bin/Packed Decimal fields.

Generate test data, to create many test files from one input file, multiple input files or from nothing at all.

Changing Fixed, Variable, Undefined and re-blocking is just a small part of what is possible. You can restructure any non-IBM file into standard IBM format.

DIRDATA parameter to read both directory and member data records from a PDS/PDSE.

Printing choices include, char, hex, both, mixed, dump or report. Alternatively convert some fields, rearrange them and print a subset.

DB/2, IMS, DL1 and ADABAS database systems supported within the base product.

IF/AND/OR, THEN/ELSE, PERFORM/GOTO logic control statements and ADD/SUB/MULT/DIV for arithmetic data types.

Conversion includes ASCII/ EBCDIC and printable hex as well as arithmetic data types.

Supports concatenation of datasets of different DSORGS. e.g. VSAM, DB2 table, sequential file.

Dynamic Allocation simplifies JCL requirements for existing datasets.

A single SELCOPY procedure adds conditional processing capability to replace multiple IBM utility steps.

Call external routines written in Assembler/Cobol or any programming language that uses Language Environment.

Large Block Interface support.

SELCOPY/i provides an Interactive Debug environment for development of the more complex batch SELCOPY programming requirements.



SELCOPY/i - DB2 Edit (New for 1.9)

The Unique multi-windowed 3270 environment

SELCOPY/i contains an advanced DB2 Management, Testing and Modelling tool, enabling organisations to quickly and easily manage their complex DB2 data structure in an intuitive windowed environment.

The screenshot displays the SELCOPY/i DB2 Edit environment with several windows open:

- Primary Option Menu:** Lists options like Settings, SQL, Edit, Browse, Create, Drop, List, and Utilities.
- Edit Object:** Shows DB2 Object details (Location, Owner, Name) and Row Selection Options (For, Number of R).
- Create Object Option Menu:** Lists 18 object types such as Storage group, Work File Database, User Database, Table space, Table, View, Alias, Index, Synonym, Type, Function, Stored procedure, Trigger, Auxiliary table, Global temporary table, Sequence, Role, and Trusted context.
- Table View:** Displays a table with columns EMPNO, FIRSTNAME, MIDINIT, LASTNAME, WORKDEPT, PHONENO, HIREDATE, JOB, EDLEVEL, SEX, BIRTHDATE, SALARY, and BONUS. The data shows various employees and their details.

The DB2 **Primary Option Menu** Window is the starting point for management and control of your DB2 environment.

Quickly and easily generate **complex SQL** commands, manage tables and objects, Browse/Edit tables, **UNLOAD** and **RELOAD** tables.

SELCOPY/i for DB2 assists users to develop **DB2 queries** which can be saved for repeated execution in the current or subsequent SELCOPY/i sessions.

The Command Centre system supports embedded **variable names** which can be set prior to exec, allowing very complex commands to be actioned.

Alternatively, user written REXX macros can **prompt for variables** before building and executing a DB2 query.

Lists of Storage Groups, Databases, Tables and Views, each in their own window, with standard point-and-shoot to **drill down** to your required entry, with a drop down action menu for more options, e.g. zoom to **single record view**.

SELCOPY/i for DB2 supports **concurrent connections** to multiple DB2 subsystems (for example live and test subsystems) with a full **audit log** for each individual DB2 connection.

Run SQL queries **on a results set**.

Browse/Edit **DB2 tables** alongside standard sequential, VSAM, HFS/zFS and PDS files.

“Save As ...” function which allows:

A new table to be created as a subset of an existing table.

May be saved as a standard SEQ, VSAM or HFS file.

Export to **plain text** or **CSV** file for distribution to other platforms or for email.

Display groups of table rows in **separate views**, or show several rows each in a separate vertical format window.