

SELCOPY/interactive

A Windowed View of the Mainframe

Release 1.80

Monday, March 01, 2010

David Austin
Technical Liaison Manager
Compute (Bridgend) Ltd

The logo consists of the letters 'CBL' in a stylized, handwritten font. The 'C' is a large, open loop on the left, and the 'B' and 'L' are connected to it on the right. The entire logo is rendered in a dark blue color.

SELCOPY Interactive Features

- Windowed Style Desktop inside 3270.
- Command Centre to increase productivity.
- Integrated File Editor.
- Dynamic SQL for DB2.
- Sophisticated file/library search facility.
- Interactive IDCAMS and ALLOC.
- HFS/zFS File System Support.

SELCOPY Interactive Features

- Easy Navigation and drill down through lists.
- SELCOPY Interactive Development.
- Structured Data Edit
 - Copybook editing (Cobol, PL/1 or CBL Defined)
 - Structures.
 - Multiple Record Types.
 - Alternate Views.

SDE is covered in a special PowerPoint.

Common System Configuration

Common Operator Commands

Grouping of commonly used commands helps Operators, Systems Programmers and Developers be more productive.

Variables can be used to tailor tasks

```

-DRA.CBLI.CMX      255 V SEQ      Size=358      Alt=0,0;0
Command>
|...+...1...+...2...+...3...+...4...+...5...+...6...+...7...
000107 |
000108 .vtam          *** CBLiVTam          ***      2007/07/13
000109 <ll user.proclib
000110 <e user.proclib(CBLiVTam); cc jcl | The PROC.
000111 <e cbl.jcl\
000112
000113 .ops
000114 | Shift-F3 setu
000115 <OQ cblivtam
000116 <OP s cblivtam
000117 <OP f cblivtam,
000118 <OP d iplinfo
000119 <OP f cblivtam,stor
000120 <OP p cblivtam
000121 <OP d m=stor
000122 >OP d u,,,_cuu,16
000123 <OP d a,l
000124 <OP d asm,all
000125 <OP d logrec,all
000126 <OP d parmlib
000127 <OP d pfk
000128 <OP d prod,reg
000129
000130 .syst          *** System stuff          ***      2007/10/05
000131 <OP d iplinfo
000132 <ll adcd.z16.parmlib
000133 <ll adcd.z16.proclib
000134 <e adcd.z16.parmlib(ieasys8w)
000135 <e adcd.z16.parmlib(commnd8w)
000136 <e adcd.z16.parmlib(progd8)
000137 <e adcd.z16.parmlib(scheddb)
000138 <e adcd.z16.parmlib(bpxprmdb)
000139 <e adcd.z16.parmlib(shutdown)
000140 <e adcd.z16.parmlib(jes2parm)
000141
000142 .tcp           *** TCP/IP stuff          ***      2007/10/05
000143 <ll cbl.tcpi.cntl
000144 <e cbl.tcpi.cntl(profile)
000145 <e cbl.tcpi.cntl(tn3270e)
000146 <e cbl.tcpi.cntl(ftpdata)
000147 <e cbl.tcpi.cntl(data)
000148
000149 .test          *** My testing stuff          ***      2007/07/18
000150 <equ DSName dra.sql1609.vb
000151 <ld %DSName%
000152 | Now allocated the file
000153 <alloc f(outdd) da('%DSName%') \
000154         tracks space(1,2) lrecl(1024) blksize(0) recfm(f,b) new catalog

```

-CBLI for TSO 1.5B - Build=200709041649 OpSys=z/OS 1.6.0 User=DRA

File List Utilities System Window Swap Help

-CBLI File Edit File search ... ? Sv ToF BoF wS wR Pfx < >

-DRA.CB Calendar ... 65 Alt=0,0;0 --x

-DRA. Comma SDSF Calculator ... Size=15 Alt=7,7;4 --x

ISPF Dataset Utilities 3....+....4....+....5....+....6....+....7....

```

000000 //IEBGENER JOB ,,CLASS=A,MSGCLASS=X,MSGLEVEL=(1,1),NOTIFY=DRA
000001 /*<sub ;00 IEBGENER Submit and wait in SDSF for output.
000002 /*<OP cancel IEBGENER Cancel it (Op and Oq are CBLI macros).
000003 /*
000004 /*
000005 /* IEBGENER
000006 /*
000007 //ST3 EC PGM=IEB
000008 //SYSUT1 DSN=INDSN
000009 // VOL=SER=S
000010 // DCB=(RECF
000011 //SYSUT2 DSN=RALEY
000012 // UNIT=SYSD
000013 //SYSPRINT DD SYSOUT=
000014 //IMMY
000015
000016
000017
000018
000019
000020
000021
000022
000023
000024
000025
000026
000027
000028
000029
000030
000031
000032
000033
000034
000035
000036
000037

```

Drop down Menus

```

-Catalog List: DRA.**
View Back Forward FDB Edit Refresh Help
Command>
Entry> DRA.**
Catalog> USERCAT.CBLCAT
Types>
-----Entry----- -Vol-- VSeq DevC FSeq T -EType- ----DSType----
DRA.CBLIDUMP.D2007192.T162330
DRA.CBLIDUMP.D2007192.T163117
DRA.CBLIDUMP.D2007212.T162254
DRA.CBLIDUMP.D2007212.T162256
DRA.CBLIDUMP.D2007213.T094012
DRA.CBLIDUMP.D2007213.T094014
DRA.D2007226.T122009.TXT
DRA.ISPF.ISPPROF
DRA.LIB.JCL
DRA.SPFLOG1.LIST
DRA.SPF1.LIST
DRA.SQ11609.VB
USERCAT.CBLCAT

```

Line 10 of 22 Col 1 of 132

Commands Embedded in JCL

> Prompt Before Execute

```

-DRA.CBLI.CMX:1 255 Y SEQ Size=965 Recl=255 Fmt=Y Files=2 Views=3
Command>
...+....1....+....2....+....3....+....4....+....5....+....6....+....7....
000305
000306 'So what is so special about the CBLI editor?'
000307
000308 - Edit new file. 1st 'save' triggers 'allocation dialog'. e.g.
000309 (This will be familiar from your CBLI initial setup)
000310 <e %user%.brand.new.LIB(MyMemb); recfm f; recl 80
000311 Use "HD" to add a header-rec etc - then save the file'
000312 >erase %user%.brand.new.LIB | Clean-up after yourself.
000313
000314 <e %user%.brand.new.KSDS; dsorg ksd5 1 10
000315 Add some records, sequenced in columns 1-10'
000316 >erase %user%.brand.new.KSDS | Clean-up after yourself.
000317
000318
000319 - Default PF keys:
000320 'PF01'=Add blank line at cursor. 'PF13'=Delete line at cursor.
000321 'PF02'=Duplicate line at cursor. 'PF14'=Split/Join at cursor.
000322 'PF22'='UNDO' changes one at a time.'PF23'='REDO' changes
000323 Try them now! Place your cursor in the file area,
000324 hit PF1/2/13/14 a few times ...
000325 - you can then 'rewind your changes' using 'PF22!'
000326
000327
000328 - Multi-level, file-independent 'UNDO/REDO' facility:
000329 UNDO and REDO not only data changes, in as many files a
000330 like, but 'line-selection' settings too!
000331 So after using 'FIND', 'EXCLUDE' or 'ONLY' to display s
000332 lines, just press PF22 to go back to your previous sele
000333 level, for as many levels as you like - Use PF23 to go
000334 again. Try it now ...
000335 <only *'*'* 59 | Select only lines with triple-asterisk i
000336
000337

```

< PF4 immediate Execute

-CBLI for TSO 1.5B - Build=200709041649 OpSys=z/OS 1.6.0 User=DRA

File List Utilities System Window Swap Help

-CBLI File Edit File search ... ? Sv ToF BoF wS wR Pfx < >

-DRA.CB Calendar ... 65 Alt=0,0;0 --+X
Calculator ...

-DRA. SDFS Size=15 Alt=7,7;4 --+X
Comma ISPF Dataset Utilities 3.....4.....5.....6.....7.....

```
000000
000001 //IEBGENER JOB , ,CLASS=A,MSGCLASS=X,MSGLEVEL=(1,1),NOTIFY=DRA
000002 // * Job ;00 IEBGENER | Submit and wait in SDFS for output.
000003 // * cancel IEBGENER | Cancel it (Op and Oq are CBLI macros).
000004 // *
000005 // IEBGENER
000006 // *
000007 // EXEC PGM=IEB
000008 // JT1 DD DSN=INDSN
000009 // VOL=SER=S
000010 // DCB=(RECF
000011 // JT2 DD DSN=RALEY
000012 // UNIT=SYSD
000013 // PRINT DD SYSOUT=*
000014 // IN DD DUMMY
000015
000016 End of File * * *
```

65 Alt=0,0;0 --+X

Size=15 Alt=7,7;4 --+X

3.....4.....5.....6.....7.....

-Catalog List: DRA.** View Back Forward FDB Edit Refresh Help

Command> Entry> DRA.**

Catalog> USERCAT.CBLCAT Types>

-----Entry----- -Vol-- VSeq DevC FSeq T -EType- ----DSType----

```
DRA.CBLIDUMP.D2007192.T162330
DRA.CBLIDUMP.D2007192.T163117
DRA.CBLIDUMP.D2007212.T162254
DRA.CBLIDUMP.D2007212.T162256
DRA.CBLIDUMP.D2007213.T094012
DRA.CBLIDUMP.D2007213.T094014
DRA.D2007226.T122009.TXT
DRA.ISPF.ISPPROF
DRA.LIB.JCL
DRA.SPFLOG1.LIST
DRA.SPF1.LIST
DRA.SQ11609.VB
USERCAT.CBLCAT
```

Line 10 of 22 Col 1 of 132

Lists can be Sorted by clicking on column headings

Utilities Menu

```
000312 >erase %user%.brand.new.L
000313
000314 <e %user%.brand.new.K
000315 'Add some records, s
000316 >erase %user%.brand.new.K
000317
000318
000319 - Default PF keys:
000320 'PF01'=Add blank line
000321 'PF02'=Duplicate line at cursor. 'PF14'=Split/Join
000322 'PF22'='UNDO' changes one at a time.'PF23'='REDO' chang
000323 Try them now! Place your cursor in the file area,
000324 hit PF1/2/13/14 a few times ...
000325 - you can then 'rewind your changes' using 'PF22'!
000326
000327
000328 - Multi-level, file-independent 'UNDO/REDO' facility:
000329 UNDO and REDO not only data changes, in as many files a
000330 like, but 'line-selection' settings too!
000331 So after using 'FIND', 'EXCLUDE' or 'ONLY' to display s
000332 lines, just press PF22 to go back to your previous sele
000333 level, for as many levels as you like - Use PF23 to go
000334 again. Try it now ...
000335 <only *`*`* 59 | Select only lines with triple-asterisk i
000336
000337 *
```

-DRA.CBLI.CMX:1 255 Y SEQ Size=965 Alt=0,0;0 --+X

Command> ...+...1...+...2...+...3...+...4...+...5...+...6...+...7...

```
000305
000306 'So what is so special about the CBLI editor?'
000307
000308 - Edit new file. 1st 'save' triggers 'allocation dialog'. e.g.
000309 (This will be familiar from your CBLI initial setup)
000310 <e %user%.brand.new.LIB(MyMemb); recfm f; recl= 80
000311 'Use "HD" to add a header-rec etc - then save the file'
000312 >erase %user%.brand.new.LIB | Clean-up after yourself.
000313
000314 <e %user%.brand.new.KSDS; dsorg ksd s 1 10
000315 'Add some records, sequenced in columns 1-10'
000316 >erase %user%.brand.new.KSDS | Clean-up after yourself.
000317
000318
000319 - Default PF keys:
000320 'PF01'=Add blank line at cursor. 'PF13'=Delete line at cursor.
000321 'PF02'=Duplicate line at cursor. 'PF14'=Split/Join at cursor.
000322 'PF22'='UNDO' changes one at a time.'PF23'='REDO' changes ...
000323 Try them now! Place your cursor in the file area,
000324 hit PF1/2/13/14 a few times ...
000325 - you can then 'rewind your changes' using 'PF22'!
000326
000327
000328 - Multi-level, file-independent 'UNDO/REDO' facility:
000329 UNDO and REDO not only data changes, in as many files as you
000330 like, but 'line-selection' settings too!
000331 So after using 'FIND', 'EXCLUDE' or 'ONLY' to display selected
000332 lines, just press PF22 to go back to your previous selection
000333 level, for as many levels as you like - Use PF23 to go forward
000334 again. Try it now ...
000335 <only *`*`* 59 | Select only lines with triple-asterisk in col 59.
000336
000337 *
```

Integrated File Editor (CBLe)

- Virtually unlimited edit sessions.
- ISPF and XEDIT modes.
- Line/Block copy/cut/paste between all windows.
- Multiple UNDO/REDO for all edit windows.
- Hot key between edit windows.
- Context sensitive editing of Dataset Names.
- Editor will colour fields for JCL, REXX etc.
- Customisable.

```

-ADCD.Z19.PARMLIB(IEASYS8W) 80 F PDS Size=40 Alt=+
Command> Scroll> Csr
|...+....1...+....2...+....3...+....4...+....5.
000001 CLOCK=00, SELECT CLOCK00
000002 CMB=(UNITR,COMM,GRAPH,CHRDR), ADDITIONAL CMB ENTRIE
000003 CMD=8W,
000004 CON=(00,NOJES3), SELECT CONSOL00
000005 COUPLE=00, RRS
000006 CSA=(3000,400000), CSA RANGE
000007 DIAG=00, SELECT DIAG00, DIAGNO
000008 DUMP=DASD, PLACE SVC DUMPS ON DA
000009 FIX=00, SELECT IEAFIX00, FIX
000010 GRS=NONE, NO COORDINATION OF GR
000011 ILMODE=NONE, EXPLICITLY DISABLE LI
000012 LNKAUTH=LNKLST, AUTHORIZE LNKLST00, A
000013 LOGCLS=L, WILL NOT BE PRINTED B
000014 LOGLMT=999999, MAX WTL MESSAGES QUEU
000015 LOGREC=SYS1.LOGREC, ERROR RECORDING
000016 LPA=00, SELECT LPALST00
000017 MAXUSER=250, SYS TASKS PLUS INITS
000018 MLPA=00, SELECT IEALPA00, MLPA
000019 MSTRJCL=00, SELECT MSTJCLEX, MAST
000020 DMVS=D8, SELECT BPXPRM00 AND B
000021 DPI=YES, ALLOW OPERATOR OVERRI
000022 PAGE=(SYS1.PLPA.PAGE,
000023 SYS1.COMMON.PAGE,
000024 SYS1.LOCAL.PAGE,L),
000025 PAK=00, SELECT IEAPAK00
000026 PLEXCFG=ANY, RRS
000027 PRDG=D8, DB2 810
000028 REAL=128, ALLOWS 2 64K DR 1 128
000029 RSU=0, NO RECONFIG STORAGE U
000030 RSVNONR=100, RESERVED ASVT ENTRIES
000031 RSVSTRT=5, RESERVED ASVT ENTRIES
000032 SCH=DB, SELECT SCHED00
000033 SMF=00, SELECT SMFPRM00, SMF
000034 SQA=(15,64), SQA SIZE APPROX 640K
000035 SSN=D2, SELECT IEFSSND2 FOR D
000036 PRDD=(00,01), PLEASE NOTE IFAPRD01
000037 SVC=00, SELECT IEASVC00, USER
000038 VAL=00, SELECT VATLST00
000039 VIODSN=SYS1.STGINDEX, VID DS
000040 VRREGN=64, DEFAULT REAL-STORAGE
000041 * * * End of File * * *

```

```

-ADCD.Z19.PARMLIB(IEASYS8C) 80 F PDS Size=41 Alt=+
Command> Scroll> Csr
|...+....1...+....2...+....3...+....4...+....
000001 CLOCK=00, SELECT CLOCK00
000002 CLPA,
000003 CMB=(UNITR,COMM,GRAPH,CHRDR), ADDITIONAL CMB EN
000004 CMD=8C,
000005 CON=(00,NOJES3), SELECT CONSOL00
000006 COUPLE=00, RRS
000007 CSA=(3000,400000), CSA RANGE
000008 DIAG=00, SELECT DIAG00, DI
000009 DUMP=DASD, PLACE SVC DUMPS O
000010 FIX=00, SELECT IEAFIX00,
000011 GRS=NONE, NO COORDINATION O
000012 ILMODE=NONE, EXPLICITLY DISABL
000013 LNKAUTH=LNKLST, AUTHORIZE LNKLST0
000014 LOGCLS=L, WILL NOT BE PRINT
000015 LOGLMT=999999, MAX WTL MESSAGES
000016 LOGREC=SYS1.LOGREC, ERROR RECORDING
000017 LPA=00, SELECT LPALST00
000018 MAXUSER=250, SYS TASKS PLUS IN
000019 MLPA=00, SELECT IEALPA00,
000020 MSTRJCL=00, SELECT MSTJCLEX,
000021 DMVS=D8, SELECT BPXPRM00 A
000022 DPI=YES, ALLOW OPERATOR OV
000023 PAGE=(SYS1.PLPA.PAGE,
000024 SYS1.COMMON.PAGE,
000025 SYS1.LOCAL.PAGE,L),
000026 PAK=00, SELECT IEAPAK00
000027 PLEXCFG=ANY, RRS
000028 PRDG=D8, SELECT PRGDB, DY
000029 REAL=128, ALLOWS 2 64K DR 1
000030 RSU=0, NO RECONFIG STORA
000031 RSVNONR=100, RESERVED ASVT ENT
000032 RSVSTRT=5, RESERVED ASVT ENT
000033 SCH=DB, SELECT SCHED00
000034 SMF=00, SELECT SMFPRM00,
000035 SQA=(15,64), SQA SIZE APPROX 6
000036 SSN=D8, SELECT IEFSSND2 F
000037 PRDD=(00,01), PLEASE NOTE IFAPR
000038 SVC=00, SELECT IEASVC00,
000039 VAL=00, SELECT VATLST00
000040 VIODSN=SYS1.STGINDEX, VID DS
000041 VRREGN=64, DEFAULT REAL-STOR

```

Compare Two similar files side by side.

```

..5...+....6...+....7....
vices.
arted tasks.
ging information.
GREC medium.
rmlibs in use.
nsole pf keys.
gistered products.
2008/07/14

* 2007/10/05 .syst
rt parameters.
rt parmlib.
clib.
rt 8W.
rt 8W.
mands for 8W.
mands for 8W.

operties table.
up.
ommand proc.
parms.

/11/28 .ams
nd silently ignored by IDCA

d the file, it cannot be

```


-CBLI for TSO 1.6B - Build=200810031551 OpSys=z/OS 1.9.0 User=DRA
File List Utilities System Window SwapList Help

```

-DRA.CBLI.CMX 255 V SEQ Size=782 Alt=0,0--+
Command> Scroll> Csr
|...+...1...+...2...+...3...+...4...
000001 ** DRA.CBLI.CMX *** L=034 ---
000002 <help cmdtxt Get hel
000003 <setpt 1 20 Set Poi
000004 <setpt 1 20;vtam CBLIYTA
000005 <setpt 1 20;demo CBLI de
000006 <setpt 1 20;cal Year Ca
000007 <setpt 1 20;mvs MVS Com
000008 <setpt 1 20;srch File/Li
000009 <setpt 1 20;ams CBLI de
000010 <setpt 1 20;test My test
000011 <setpt 1 20;qry Query o
000012 <setpt 1 20;si Selcopy
000013 <setpt 1 20;vcat VCAT.
000014 <setpt 1 20;CBLI CBLI Ma
000015 <setpt 1 20;fs File Se
000016 <setpt 1 20;db2 SQL.
000017 <setpt 1 20;help Help se
000018 <setpt 1 20;ops MVS Ope
000019 <setpt 1 20;tcp TCPIP s
000020 <setpt 1 20;bcs System
000021 <setpt 1 20;sys System
000022 <setpt 1 20;sde Structu
000023 (OR sign indica
000024
.HFS .hfs *** Hierarchical File System
000026 <ld /ADCD/etc/hosts | 2007/08/08 Fn
000027 <e /ADCD/etc/hosts
000028 <ld /ADCD/etc/booksrv
000029 <ld /ADCD/etc
000030 <ld /mnt
000031 <ld /usr
000032 <ld /var
000033 <ld /tmp
000034 <ld /V1R6
000035 <ld /
.DEMO .demo *** My DEMO Stuff
000037 <lc sys1.m list al
000038 <ld sys1.m list al
000039 <e sys1.maclib(open) edit op
000040 <e cbl.cmx(sde) edit open me
000041 <tso lista
000042 <lvol cbl
000043 <lvol cblmct
000044 <lvol z*
000045 <lvol z*; where SMS=N & FREECYL >= 1000 sort
000046 <fs SYS1.maclib(d*) 'mnote'
000047 <em firstuse
000048
000049 <e cbl.cmx(jge); setpt 68 100; .Cal
000050 <e cbl.cmx(jge);
000051 <e cbl.cmx(nb);
000052 <e cbl.cmx(racf);

```

```

-ADCD.Z19.PARMLIB(IEASYS8C) 80 F PDS Size=--+
Command> Scroll> Csr
|...+...1...+...2...+...3...+...4...
000001 CLOCK=00, SELECT CLOCK00
000002 CLPA,
000003 CMB=(UNITR,COMM,GRAPH,CHRDR), ADDITIONAL CMB
000004 CMD=8C,
000005 CON=(00,NOJES3), SELECT CONSOLE
000006 COUPLE=00, RRS
000007 CSA=(3000,400000), CSA RANGE
000008 DIAG=00, SELECT DIAG00,
000009 DUMP=DASD, PLACE SVC DUMP
000010 FIX=00, SELECT IEAFIX0
000011 GRS=NONE, NO COORDINATIO
000012 ILMMODE=NONE, EXPLICITLY DIS
000013 LNKAUTH=LNKLIST, AUTHORIZE LNK
000014 LOGCLS=L, WILL NOT BE PR
000015 LOGLMT=999999, MAX WTL MESSAG
000016 LOGREC=SYS1.LOGREC, ERROR RECORDIN
000017 LPA=00, SELECT LPALSTO
000018 MAXUSER=250, SYS TASKS PLUS
000019 MLPA=00, SELECT IEALPA0
000020 MSTRJCL=00, SELECT MSTJCLE
000021 OMVS=D8, SELECT BPXPRM0
000022 OPI=YES, ALLOW OPERATOR
000023 PAGE=(SYS1.PLPA.PAGE,
000024 SYS1.COMMON.PAGE,
000025 SYS1.LOCAL.PAGE,L),
000026 PAK=00, SELECT IEAPAK0
000027 PLEXCFG=ANY, RRS
000028 PROG=D8, SELECT PROGDB,
000029 REAL=128, ALLOWS 2 64K 0
000030 RSU=0, NO RECONFIG ST
000031 RSVNONR=100, RESERVED ASVT
000032 RSVSTRT=5, RESERVED ASVT
000033 SCH=DB, SELECT SCHED00
000034 SMF=00, SELECT SMFPRM0
000035 SQA=(15,64), SQA SIZE APPR
000036 SSN=D8, SELECT IEFSSND
000037 PROD=(00,01), PLEASE NOTE IF
000038 SVC=00, SELECT IEASVCO
000039 VAL=00, SELECT VATLST0
000040 VIODSN=SYS1.STGINDEX, VIO DS
000041 VRREGN=64 DEFAULT REAL-S
000042 * * * End of File * * *

```

```

-ADCD.Z19.PARMLIB(IEASYS8W) 80 F PDS Size=--+
Command> Scroll> Csr
|...+...1...+...2...+...3...+...4...
000001 CLOCK=00, SELECT CLOCK00
000002 CMB=(UNITR,COMM,GRAPH,CHRDR), ADDITIONAL CM
000003 CMD=8W,
000004 CON=(00,NOJES3), SELECT CONSOL
000005 COUPLE=00, RRS
000006 CSA=(3000,400000), CSA RANGE
000007 DIAG=00, SELECT DIAG00
000008 DUMP=DASD, PLACE SVC DUM
000009 FIX=00, SELECT IEAFIX0
000010 GRS=NONE, NO COORDINATI
000011 ILMMODE=NONE, EXPLICITLY DI
000012 LNKAUTH=LNKLIST, AUTHORIZE LNK
000013 LOGCLS=L, WILL NOT BE P
000014 LOGLMT=999999, MAX WTL MESSA
000015 LOGREC=SYS1.LOGREC, ERROR RECORDI
000016 LPA=00, SELECT LPALST
000017 MAXUSER=250, SYS TASKS PLU
000018 MLPA=00, SELECT IEALPA
000019 MSTRJCL=00, SELECT MSTJCL
000020 OMVS=D8, SELECT BPXPRM
000021 OPI=YES, ALLOW OPERATO
000022 PAGE=(SYS1.PLPA.PAGE,
000023 SYS1.COMMON.PAGE,
000024 SYS1.LOCAL.PAGE,L),
000025 PAK=00, SELECT IEAPAK
000026 PLEXCFG=ANY, RRS
000027 PROG=D8, DB2 810
000028 REAL=128, ALLOWS 2 64K
000029 RSU=0, NO RECONFIG S
000030 RSVNONR=100, RESERVED ASVT
000031 RSVSTRT=5, RESERVED ASVT
000032 SCH=DB, SELECT SCHED00
000033 SMF=00, SELECT SMFPRM
000034 SQA=(15,64), SQA SIZE APPR
000035 SSN=D2, SELECT IEFSSN
000036 PROD=(00,01), PLEASE NOTE I
000037 SVC=00, SELECT IEASVC
000038 VAL=00, SELECT VATLST
000039 VIODSN=SYS1.STGINDEX, VIO DS
000040 VRREGN=64 DEFAULT REAL-
000041 * * * End of File * * *

```

Tile Vertically

```

-DRA.CBLI.CMX 255 V
Command>
|...+...1...+...
000001 ** DRA.CBLI.CMX *
000002 <help cmdtext
000003 <setpt 1 20
000004 <setpt 1 20;.vtam
000005 <setpt 1 20;.demo
000006 <setpt 1 20;.cal
000007 <setpt 1 20;.mvs
000008 <setpt 1 20;.srch
000009 <setpt 1 20;.ams
000010 <setpt 1 20;.test
000011 <setpt 1 20;.qry
000012 <setpt 1 20;.si
000013 <setpt 1 20;.vcat
000014 <setpt 1 20;.CBLi
000015 <setpt 1 20;.fs

```

New Window
Cascade
Tile Horizontally
Tile Vertically
Arrange ...
Arrange Minimised

DRA.CBLI.CMX 255 V SEQ Size=782 Alt=0,0;1
ADCD.Z19.PARMLIB(IEASYS8C) 80 F PDS Size=41 Alt=0,0;0
/ ADCD.Z19.PARMLIB(IEASYS8W) 80 F PDS Size=40 Alt=0,0;0

CBLi demo commands.
My testing stuff.
Query options.
Selcopy interactive.
VCAT.
CBLi Macros.
File Seraches.

Click 'Window' for options.

```

|...+...1...+...2...+...3...+...4...+...5...+...6...+...7...+...8...+...9...+...10...+...11...+...12...+...13...+...14...+...15...
000001 CLOCK=00, SELECT CLOCK00
000002 CLPA,
000003 CMB=(UNITR,COMM,GRAPH,CHDR), ADDITIONAL CMB ENTRIES
000004 CMD=8C,
000005 CON=(00,NOJES3), SELECT CONSOL00
000006 COUPLE=00, RRS
000007 CSA=(3000,400000), CSA RANGE
000008 DIAG=00, SELECT DIAG00, DIAGNOSTIC COMMANDS
000009 DUMP=DASD, PLACE SVC DUMPS ON DASD DEVICES
000010 FIX=00, SELECT IEAFIX00, FIX MODULES SPECIFIED
000011 GRS=NONE, NO COORDINATION OF GRS REQUESTS
000012 ILMMODE=NONE, EXPLICITLY DISABLE LICENSE MANAGER
000013 LNKAUTH=LNKLST, AUTHORIZE LNKLST00, APFTAB IS ALTERNATE
000014 LOGCLS=L, WILL NOT BE PRINTED BY DEFAULT
000015 LOGLMT=999999, MAX WTL MESSAGES QUEUED, MUST BE 6 DIGITS

```

Files in Ring, click one to go direct to it.

```

|...+...1...+...2...+...3...+...4...+...5...+...6...+...7...+...8...+...9...+...10...+...11...+...12...+...13...+...14...+...15...
000001 CLOCK=00, SELECT CLOCK00
000002 CMB=(UNITR,COMM,GRAPH,CHDR), ADDITIONAL CMB ENTRIES
000003 CMD=8W,
000004 CON=(00,NOJES3), SELECT CONSOL00
000005 COUPLE=00, RRS
000006 CSA=(3000,400000), CSA RANGE
000007 DIAG=00, SELECT DIAG00, DIAGNOSTIC COMMANDS
000008 DUMP=DASD, PLACE SVC DUMPS ON DASD DEVICES
000009 FIX=00, SELECT IEAFIX00, FIX MODULES SPECIFIED
000010 GRS=NONE, NO COORDINATION OF GRS REQUESTS
000011 ILMMODE=NONE, EXPLICITLY DISABLE LICENSE MANAGER
000012 LNKAUTH=LNKLST, AUTHORIZE LNKLST00, APFTAB IS ALTERNATE
000013 LOGCLS=L, WILL NOT BE PRINTED BY DEFAULT
000014 LOGLMT=999999, MAX WTL MESSAGES QUEUED, MUST BE 6 DIGITS
000015 LOGREC=SYS1.LOGREC, ERROR RECORDING

```

Tile Horizontally

Dynamic SQL for DB2

- SQL commands can be stored for later execution in Command Centre.
- Sort on Table Column Headings.
- Extend the SELECT as required.
- Switch Views.

Execute SQL command.

```
DRA.CBLI.CMX 255 V SEQ Size=782 Alt=0,0;2
Command>
|. . . + . . . 1 . . . + . . . 2 . . . + . . . 3 . . . + . . . 4 . . . + . . . 5 . . . + . . . 6 . . . + . . . 7 . . .
.DB2 .db2 *** DB2 *** .db2
000410 <sql select * from sysibm.syscolumns where tbname='EMP' and tbcreator='LAC
000411 <sql select * from sysibm.syscolumns where tbname='EMP'
000412 <sql select * from sysibm.syscolumns
000413 <sql select * from sysibm.ipnames
000414 <sql select * from sysibm.locations
000415
.HELP .help *** IMPORTANT - Use of Large 3270 Screen Sizes *** .help
000417 Due to its 'windowing' capability;
000418 Multiple, Moveable, Resizable display windows,
000419 CBLi 'exploits' the use of 'Large Dynamic 3270 Screens'
000420 available via modern 3270 emulation packages
000421 (e.g. 'VISTA tn3270', 'IBM Personal Communications', etc)
000422
000423 You are probably currently using one of the 3270 Standard screens:
000424 24 lines x 80 columns (Model-2)
000425 32 lines x 80 columns (Model-3)
000426 43 lines x 80 columns (Model-4)
000427 24 lines x 132 columns (Model-5)
000428
000429 'Massive gains in productivity' can be achieved by using CBLi
000430 having configured your system/emulator for dynamic screens.
000431 ISPF currently supports a maximum screen size of:
000432 62 lines x 160 columns (This is good for 'SDSF' too!)
000433
000434 If you are using CBLi as a VTAM application (under MVS or VSE),
000435 directly under TSO, or as a VM/CMS executable then great results
000436 can be achieved using screens up to:
000437 86 lines x 190 columns
000438
000439 For instructions on how to get large screens (emulator permitting)
000440 please see CBL's web page:
```

Dynamic SQL Screen

DB2 Plan Name.

```

Dynamic SQL: DB96
View Back Forward FDB Edit Refresh Log Help
Command>
DB2 Subsystem> DB96                               Plan> CBLPLAN0
Select Limit> 2000                               AutoCommit> Y
SQL Statement> select * from sysibm.systables where tbname='EMP'
>
>
--NAME--- TBNAME  TBCREATOR  COLNO-  COLTYPE-  LENGTH  SCALE-  NULLS  --COLCARD
EMPNO     EMP      DSN8910    1  CHAR      6        0  N      42  200
FIRSTNME  EMP      DSN8910    2  VARCHAR   12        0  N      -1
MIDINIT   EMP      DSN8910    3  CHAR      1        0  N      -1
LASTNAME  EMP      DSN8910    4  VARCHAR   15        0  N      -1
WORKDEPT  EMP      DSN8910    5  CHAR      3        0  Y      8  E1
PHONENO   EMP      DSN8910    6  CHAR      4        0  Y      -1
HIREDATE  EMP      DSN8910    7  DATE      4        0  Y      -1
JOB       EMP      DSN8910    8  CHAR      8        0  Y      -1
EDLEVEL   EMP      DSN8910    9  SMALLINT  2        0  Y      -1
SEX       EMP      DSN8910   10  CHAR      1        0  Y      -1
BIRTHDATE EMP      DSN8910   11  DATE      4        0  Y      -1
SALARY    EMP      DSN8910   12  DECIMAL   9        2  Y      -1
BONUS     EMP      DSN8910   13  DECIMAL   9        2  Y      -1
COMM      EMP      DSN8910   14  DECIMAL   9        2  Y      -1
EMPNO     EMP      FMNDB2     1  CHAR      6        0  N      -1
FIRSTNME  EMP      FMNDB2     2  VARCHAR   12        0  N      -1
MIDINIT   EMP      FMNDB2     3  CHAR      1        0  N      -1
LASTNAME  EMP      FMNDB2     4  VARCHAR   15        0  N      -1
WORKDEPT  EMP      FMNDB2     5  CHAR      3        0  Y      -1
PHONENO   EMP      FMNDB2     6  CHAR      4        0  Y      -1
HIREDATE  EMP      FMNDB2     7  DATE      4        0  Y      -1
JOB       EMP      FMNDB2     8  CHAR      8        0  Y      -1
EDLEVEL   EMP      FMNDB2     9  SMALLINT  2        0  Y      -1

```

Line 1 of 28 | Col 1 of 416 | Views 1 | select *

DB2 Sub System Name (SSN).

```

Scroll> Csr
+....5....+....6....+....7....
.db2
bname='EMP' and tcreator='LAC
bname='EMP'

screen Sizes *** .help

windows,
3270 Screens'
es
ications', etc)

e 3270 Standard screens:

```

Usual PF keys PF10/11 and PF7/8 to view left/right and back/forw.

```

000425      32 lines x 80 columns (Model-3)
000426      43 lines x 80 columns (Model-4)
000427      24 lines x 132 columns (Model-5)
000428
000429 'Massive gains in productivity' can be achieved by using CBLi
000430 having configured your system/emulator for dynamic screens.
000431 ISPF currently supports a maximum screen size of:
000432      62 lines x 160 columns (This is good for 'SDSF' too!)
000433
000434 If you are using CBLi as a VTAM application (under MVS or VSE),
000435 directly under TSO, or as a VM/CMS executable then great results
000436 can be achieved using screens up to:
000437      86 lines x 190 columns
000438
000439 For instructions on how to get large screens (emulator permitting)
000440 please see CBL's web page:

```

File/Library Searches

- Uses SQL type syntax with multiple search criteria.
 - Select
 - Where
 - Sort
 - Prefixes results with instant edit command.

-CBLi for TSO 1.5B - Build=200709041649 OpSys=z/OS 1.6.0 User=DRA

File List Utilities System Window Swap Help

-CBLi File Edit Actions Options Window Help ? Sv ToF BoF wS wR Pfx <>

-DRA.FSX.D2007257.T151236.TXT 255 V SEQ Size=3387 Alt=0,0;0

Command> |...+...1...+...2...+...3...+...4...+...5...+...6...+...7...+...8...+...9...+...10...+...11...+...12...+...13...+...14...+...

Different Colour for each Library

```

000001 ** DRA.FSX
000002 | F4 on t
000003 <zone 50
000004 <only '--
000005 <only '--
000006
000007 ** 'CBL.E
000008 <e 'CBL.E
000009 <e 'CBL.EXEC(RX02
000010 <e 'CBL.EXEC(RX02
000011 <e 'CBL.EXEC(SCAN
000012 <e 'CBL.EXEC(SCAN
000013 <e 'CBL.EXEC(SEL
000014 <e 'CBL.EXEC(SEI
000015 <e 'CBL.EXEC(SE
000016 <e 'CBL.EXEC(T
000017 -- 'CBL.EXEC(*)
000018
000019 ** 'DSU.EXEC(*) ***
000020 <e 'DSU.EXEC(DSURECG )'
000021 <e 'DSU.EXEC(DSURECG )'
000022 -- 'DSU.EXEC(*)
000023
000024 ** 'GEN.EXEC(*) ***
000025 <e 'GEN.EXEC(AMPARSE )'
000026 <e 'GEN.EXEC(CBLAMC )'
000027 <e 'GEN.EXEC(CBLESQ L)'
000028 <e 'GEN.EXEC(CBL3HTML )'
000029 <e 'GEN.EXEC(CBL3X )'
000030 <e 'GEN.EXEC(CTRDBOC )'
000031 <e 'GEN.EXEC(DBEXE
000032 <e 'GEN.EXEC(DBEXE
000033 <e 'GEN.EXEC(DBEXE
000034 <e 'GEN.EXEC(DBEXE
000035 <e 'GEN.EXEC(DB
000036 <e 'GEN.EXEC(DBEXE
000037 <e 'GEN.EXEC(DB
000038 <e 'GEN.EXEC(DB
000039 <e 'GEN.EXEC(DB
000040 <e 'GEN.EXEC(DB
000041 <e 'GEN.EXEC(DB
000042 <e 'GEN.EXEC(DB
000043 <e 'GEN.EXEC(DB
000044 <e 'GEN.EXEC(DBEXE
000045 <e 'GEN.EXEC(DBEXE
000046 <e 'GEN.EXEC(DBEXE
000047 <e 'GEN.EXEC(DBEXE
000048 <e 'GEN.EXEC(DBEXE
000049 <e 'GEN.EXEC(DBHD
000050 <e 'GEN.EXEC(DBHD
000051 <e 'GEN.EXEC(DBHD

```

Instantly Edit File (PF4)

```

:000013 The second parameter is the address of the dataset name
:000014 note that the address of the work area and the associated
:000034 Address CBLEEDIT
:000092 Address CBLEEDIT
:000007 Parameter 1 is the address of selcopy record data of the form
:000013 The second parameter is the address of the dataset name
:000014 note that the address of the work area and the associated
:000004 address 'C
has 4 member(s)

```

-DRA.CBLI.CMX 255 V SEQ Size=254 Alt=0,0;1

Command> |...+...1...+...2...+...3...+...4...+...5...+...6...+...7...

```

000146 | Use a DDNAME to specify libraries to search.
000147 <FsX 'address ' SYSEXEC
000148 <FsX 'MOUNT' SYS1.*.PROCLIB
000149
000150 | The following illustrates use of multiple masks
000151 <FsX 'address ' SYSEXEC(C*) =(D*) =(S*) | '=' means use previous.
000152
000153 | A 'SUBSET' can also be added to further fi
000154 e.g. filter out all records containing 'IS
000155 <FsX 'address ' SYSEXEC subset /where recor
000156
000157 | Continuing a command over multiple lines ma
000158 update by duplicating (PF2) and modifi
000159 e.g.
000160 <FsX 'address '
000161 SYSEXEC
000162 SYSPROC
000163 ISPEXEC
000164 %User.Edit.MacroPath%
000165 subset /where record not << 'ISPEXEC'
000166 & record not << 'ISREDIT'
000167 & record not << 'TSO'
000168 / | Look for 'unusual' address() parms.
000169
000170
000171
000172 .help *** IMPORTANT - Use of Large 3270 Screen Sizes ***
000173 Due to its 'windowing' capability;
000174 Multiple, Moveable, Resizable display windows,
000175 CBLi 'exploits' the use of 'Large Dynamic 3270 Screens'
000176 available via modern 3270 emulation packages
000177 (e.g. 'VISTA tn3270', 'IBM Personal Communications', etc)

```

Multi line Search Command with subsets.

Interactive IDCAMS

- Panels to build IDCAMS input streams.
- IDCAMS can be executed directly from command centre file.
- Results in a window.
- Build IDCAMS JCL streams and save.

- Execute SELCOPY ...
- Execute SLMCAT ...
- Edit ...
- DB2 Dynamic SQL ...
- Allocate NonVSAM ...
- Execute IDCAMS ...
- Define KSDS ...
- Define ESDS ...
- Define RRDS ...
- Define LDS ...
- Define AIX ...
- Define Path ...
- Define Alias ...
- Define Catalog ...
- Execute POWER ...

Select File menu option

Choose Define KSDS

```

-DRA.CBLI.CMX      255 V SEQ      Size=358      Alt=0,0;2      -+
Command>
|...+....1....+....2....+....3....+....4....+....5....+....6....+....7....
.DB2      .db2      ** DB2 **
000270 <sql select * from sysibm.syscolumns where tbname='EMP' and tbcreator='LAC
000271 <sql select * from sysibm.syscolumns where tbname='EMP'
000272 <sql select * from sysibm.syscolumns
000273 <sql select * from sysibm.ipnames
000274 <sql select * from sysibm.locations
000275
.DHELP .help      *** IMPORTANT - Use of Large 3270 Screen Sizes ***
000277 Due to its 'windowing' capability;
000278 Multiple, Moveable, Resizable display windows,
000279 CBLI 'exploits' the use of 'Large Dynamic 3270 Screens'
000280 available via modern 3270 emulation packages
000281 (e.g. 'VISTA tn3270', 'IBM Personal Communications', etc)
000282
000283 You are probably currently using one of the 3270 Standard screens:
000284 24 lines x 80 columns (Model-2)
000285 32 lines x 80 columns (Model-3)
000286 43 lines x 80 columns (Model-4)
000287 24 lines x 132 columns (Model-5)
000288
000289 'Massive gains in productivity' can be achieved by using CBLI
000290 having configured your system/emulator for dynamic screens.
000291 ISPF currently supports a maximum screen size of:
000292 62 lines x 160 columns (This is good for 'SDSF' too!)
000293
000294 If you are using CBLI as a VTAM application (under MVS or VSE),
000295 directly under TSO, or as a VM/CMS executable then great results
000296 can be achieved using screens up to:
000297 86 lines x 190 columns
000298
000299 For instructions on how to get large screens (emulator permitting)
000300 please see CBL's web page:
000301 http://www.cbl.com/cbli3270.html
000302
000303 and IBM's Techdocs library entry,
000304 'Creating dynamic 3270 screen size definitions for increased productivit
000305 http://www-03.ibm.com/support/techdocs/atsmastr.nsf/WebIndex/TD102151
000306
000307
000308 Significant productivity-gains are achievable through the use
000309 of 'hot-keys' for frequent actions.
000310 Standard 3270-display architecture provides user configuarble
000311 'PF keys' for this purpose,
000312 e.g. PF3 for 'END', PF12 for 'RETRIEVE' etc
000313
000314 Having up to 24 PF keys available for a mainframe session
000315 seems very restrictive when compared with other platforms
000316 which can use the 'Ctrl' and 'Alt' keys in combination with

```

-CBLi for TSO 1.5B - Build=200710231123 OpSys=z/OS 1.6.0 User=DRA
File List Utilities System Window SwapList Help

-CBLi
File Edit Actions Options Window Help ? Sv ToF BoF wS wR Pfx < >

Give the Dataset a name

```
-DRA.CBLI.CMX 255 V SEQ Size=358 Alt=0,0;2
Command>
|...+...1...+...2...+...3...+...4...+...5...+...6...+...7...
.DB2 .db2 ** DB2 ***
000270 <sql select * from sysibm.syscolumns where tbname='EMP' and tbcreator='LAC
000271 <sql select * from sysibm.syscolumns where tbname='EMP'
000272 <sql select * from sysibm.syscolumns
000273 <sql select * from sysibm.ipnames
000274 <sql select * from sysibm.locations
```

-Define VSAM KSDS
Define Job AMS Help

Enter Name> Type> KSDS
Model> Reuse> N
Catalog> Span> N

KSDS Define

! Enter the new cluster name:
Cluster Name> dra.sample.ksds

OK Cancel

Space type> TRACKS Primary> 1 Secondary> 1
CI Size> 4096

Index name>
Volumes>
Space type> TRACKS Primary> 1 Ordered> N
CI Size> 512 Imbed> N Secondary> 1
Replicate> N

3270 Screen Sizes ***

ay windows,
ic 3270 Screens'
kages
munications', etc)

the 3270 Standard screens:

achieved by using CBLi
for dynamic screens.
n size of:
good for 'SDSF' too!)

tion (under MVS or VSE),
utable then great results

reens (emulator permitting)

000300 please see CBLi's web page:
000301 <http://www.cbl.com/cbli3270.html>
000302
000303 and IBM's Techdocs library entry,
000304 'Creating dynamic 3270 screen size definitions for increased productivit
000305 <http://www-03.ibm.com/support/techdocs/atsmastr.nsf/WebIndex/TD102151>
000306
000307
000308 Significant productivity-gains are achievable through the use
000309 of 'hot-keys' for frequent actions.
000310 Standard 3270-display architecture provides user configuarble
000311 'PF keys' for this purpose,
000312 e.g. PF3 for 'END', PF12 for 'RETRIEVE' etc
000313
000314 Having up to 24 PF keys available for a mainframe session
000315 seems very restrictive when compared with other platforms
000316 which can use the 'Ctrl' and 'Alt' keys in combination with

```
-CBLi for TSO 1.5B - Build=200710231123 OpSys=z/OS 1.6.0 User=DRA
File List Utilities System Window SwapList Help
-CBLi
File Edit Actions Options Window Help ? Sv ToF BoF wS wR Pfx <>
```

Click 'Define' to run it

Click 'Job' to create a DEFINE Deck.

```
Define VSAM KSDS
Define Job AMS Help
>
Cluster Name> DRA.SAMPLE.KSDS
Model>
Catalog>
Type> KSDS
Reuse> N
Span> N
Speed> N
Writecheck> N
Erase> N
Avg rec len> 4089
Key length> 64
Max rec len> 4089
Key offset> 0
Buffer size>
Free space/CI> 0
Expiry>
Free space/CA> 0
Region share option> 1
System share option> 3
SMS Data Class>
SMS Stor Class>
SMS Maint Class>
Data name> DRA.SAMPLE.KSDS.DATA
Volumes>
Space type> TRACKS
CI Size> 4096
Primary> 1
Ordered> N
Secondary> 1
Index name> DRA.SAMPLE.KSDS.INDEX
Volumes>
Space type> TRACKS
CI Size> 512
Primary> 1
Imbed> N
Ordered> N
Secondary> 1
Replicate> N
```

Keys

Cluster

Data

Index

```
t=0,0;2
Scroll> Csr
...4....+....5....+....6....+....7....
```

```
000271 <sql select * from sysibm.syscolumns where tbname='EMP' and tbcreator='LAC
000272 <sql select * from sysibm.syscolumns where tbname='EMP'
000273 <sql select * from sysibm.ipnames
000274 <sql select * from sysibm.locations
000275
000276
000277 .HELP .help *** IMPORTANT - Use of Large 3270 Screen Sizes ***
000278 Due to its 'windowing' capability;
000279 Multiple, Moveable, Resizable display windows,
000280 CBLi 'exploits' the use of 'Large Dynamic 3270 Screens'
000281 available via modern 3270 emulation packages
000282 (e.g. 'VISTA tn3270', 'IBM Personal Communications', etc)
000283
000284 You are probably currently using one of the 3270 Standard screens:
000285 24 lines x 80 columns (Model-2)
000286 32 lines x 80 columns (Model-3)
000287 43 lines x 80 columns (Model-4)
000288 24 lines x 132 columns (Model-5)
000289
000290 'Massive gains in productivity' can be achieved by using CBLi
000291 having configured your system/emulator for dynamic screens.
000292 ISPF currently supports a maximum screen size of:
000293 62 lines x 160 columns (This is good for 'SDSF' too!)
```

```

DRA.SAMPLE.KSDS.DEFINE      80 F SEQ      Size=34      Alt=0,0;0
Command>
|...+....1....+....2....+....3....+....4....+....5....+....6....+....7....+....>
000001 //CBLIAMS JOB ACCT,'NAME',CLASS=A,MSGCLASS=X,NOTIFY=DRA
000002 /**
000003 /** Created with CBLi: 2007/10/24 16:51:09
000004 /**
000005 /**
000006 //STEP0001 EXEC PGM=IDCAMS,REGION=4M
000007 //SYSPRINT DD SYSOUT=*
000008 //SYSIN DD *
000009 DEFINE
000010 CLUSTER(
000011     NAME(DRA.SAMPLE.KSDS)
000012     INDEXED
000013     NOREUSE
000014     NOERASE
000015     NONSPANNED
000016     RECOVERY
000017     NOWRITECHECK
000018     SHAREOPTIONS(1 3)
000019 )
000020 DATA(
000021     NAME(DRA.SAMPLE.KSDS.DATA)
000022     RECORDSIZE(4089 4089 )
000023     KEYS(64 0 )
000024     FREESPACE(0 0 )
000025     CONTROLINTERVALSIZE(4096 )
000026     TRACKS (1 1 )
000027 )
000028 INDEX(
000029     NAME(DRA.SAMPLE.KSDS.INDEX)
000030     TRACKS (1 1 )
000031     CONTROLINTERVALSIZE(512 )
000032     NOIMBED
000033     NOREPLICATE
000034 )
000035 * * * End of File * * *

```

IDCAMS Define JCL
Created

```

V SEQ      Size=358      Alt=0,0;2
Command>
|...2....+....3....+....4....+....5....+....6....+....7....
DB2 ***
rom sysibm.syscolumns where tbname='EMP' and tbcreator='LAC
rom sysibm.syscolumns where tbname='EMP'
rom sysibm.syscolumns
rom sysibm.ipnames
rom sysibm.locations

* IMPORTANT - Use of Large 3270 Screen Sizes ***
indowing' capability;
Moveable, Resizable display windows,
s' the use of 'Large Dynamic 3270 Screens'
modern 3270 emulation packages
tn3270', 'IBM Personal Communications', etc)

```

```

000283 You are probably currently using one of the 3270 Standard screens:
000284 24 lines x 80 columns (Model-2)
000285 32 lines x 80 columns (Model-3)
000286 43 lines x 80 columns (Model-4)
000287 24 lines x 132 columns (Model-5)
000288
000289 'Massive gains in productivity' can be achieved by using CBLi
000290 having configured your system/emulator for dynamic screens.
000291 ISPF currently supports a maximum screen size of:
000292 62 lines x 160 columns (This is good for 'SDSF' too!)
000293

```

File Edit Font Transfer Macro Options Window Help

-CBLi for TSO 1.5B - Build=200710231123 OpSys=z/OS 1.6.0 User=DRA

File List Utilities System Window SwapList Help

-CBLi
File Edit Actions Options Window Help ? Sv ToF BoF wS wR Pfx < >

```

DRA.SAMPLE.KSDS.DEFINE      80 F SEQ      Size=34      Alt=0,0;0
Command> jobcard
...+...1...+...2...+...3...+...4...+...5...+...6...+...7...+...>
000001 //CBLIAMSDD JOB ACCT,'NAME',CLASS=A,MSGCLASS=X,NO...
000002 /**
000003 /** Created with CBLi: 2007/10/25 15:04:27
000004 /**
000005 /**
000006 //STEP0001 EXEC PGM=IDCAMS,REGION=4M
000007 //SYSPRINT DD SYSOUT=*
000008 //SYSIN DD *
000009 DEFINE
000010 CLUSTER(
000011     NAME(DRA.SAMPLE.KSDS
000012     INDEXED
000013     NOREUSE
000014     NOERASE
000015     NONSPANNED
000016     RECOVERY
000017     NOWRITECHECK
000018     SHAREOPTIONS(1 3)
000019 )
000020 DATA(
000021     NAME(DRA.SAMPLE.KSDS.DATA
000022     RECORDSIZE(4089 4089 )
000023     KEYS(64 0 )
000024     FREESPACE(0 0 )
000025     CONTROLINTERVALSIZE(4096 )
000026     TRACKS (1 1 )
000027 )
000028 INDEX(
000029     NAME(DRA.SAMPLE.KSDS.INDEX
000030     TRACKS (1 1 )
000031     CONTROLINTERVALSIZE(512 )
000032     NOIMBED
000033     NOREPLICATE
000034 )
000035 * * * End of File * * *

```

Use 'jobcard' macro
to prepare for
submission.

jobcard

```

V SEQ      Size=363      Alt=0,0;0
not found.
***
L=013 --- 2007/10/25 14:41:52 (DRA)
Get help on the PF4 key.
Set Points only.
CBLIVTAM commands.
My testing stuff.
Query options.
Selcopy interactive.
VCAT.
CBLi Macros.
File Searches.
SQL.
Help section.
MVS Operator commands.
TCP/IP setup.
System configuration.
Structured Data Edit.
(OR sign indicates start of comment).
ructured Data Edit
10.sfmnsam1(fmncdata) using cbl.cbli.sdo(fmncdata); v*
; setpt 68 90; .sde

```

```

000022 .hfs      *** Hierarchical File System      ***
000023 <ld /ADCD/etc/hosts      | 2007/08/08 Fname not yet supported.
000024 <e /ADCD/etc/hosts
000025 <ld /ADCD/etc/booksrv
000026 <ld /ADCD/etc
000027 <ld /mnt
000028 <ld /usr
000029 <ld /var
000030 <ld /tmp
000031 <ld /V1R6
000032 <ld /

```

Te Line=1 Col=1 Alt=0,0;0 Size=34 Recl=80 Fmt=F Files=2 Views=2

Ma 2007/10/25(298) 15:05 zos.cbl.com 0.0

a 7,20

```

DRA.SAMPLE.KSDS.DEFINE      80 F SEQ      Size=38      Alt=4,4;1
Command>
|...+...1...+...2...+...3...+...4...+...5...+...6...+...7...+...>
000000 * * * Top of File * * *
000001 //KSDS JOB ,,CLASS=A,MSGCLASS=X,MSGLEVEL=(1,1),NOTIFY=DRA
000002 /**<sub ;DQ KSDS      Submit and wait in SDSF for output.
000003 /**<OP cancel KSDS    Cancel it (Op and Oq are CBLi macros).
000004 /**
000005 //CBLIAMS JOB ACCT, 'AME',CLASS=A,MSGCLASS=X,NOTIFY=DRA
000006 /**
000007 /** Created with CBLi 2007/10/25 15:04:27
000008 /**
000009 /**
000010 //STEP0001 EXEC PGM=IDCAMS
000011 //SYSPRINT DD SYSOUT=*
000012 //SYSIN DD *
000013 DEFINE
000014 CLUSTER(
000015 NAME(DRA.SAMPLE.KSDS
000016 INDEXED
000017 NOREUSE
000018 NOERASE
000019 NONSPANNED
000020 RECOVERY
000021 NOWRITECHECK
000022 SHAREOPTIONS(1 3
000023 )
000024 DATA(
000025 NAME(DRA.SAMPLE.
000026 RECORDSIZE(4089
000027 KEYS(64 0 )
000028 FREESPACE(0 0 )
000029 CONTROLINTERVALSIZE(4096 )
000030 TRACKS (1 1 )
000031 )
000032 INDEX(
000033 NAME(DRA.SAMPLE.KSDS.INDEX
000034 TRACKS (1 1 )
000035 CONTROLINTERVALSIZE(512 )
000036 NOIMBED
000037 NOREPLICATE
000038 )

```

'jobcard' macro generates job card and sets colours.

Embeds commands for submit & GO to output queue.

```

V SEQ      Size=363      Alt=0,0;0
not found.
***
L=013 --- 2007/10/25 14:41:52 (DRA)
Get help on the PF4 key.
Set Points only.
CBLIAMS commands.
My testing stuff.
Query options.
Selcopy interactive.
VCAT.
CBLi Macros.
File Seraches.
SQL.
Help section.
MVS Operator commands.
TCP/IP setup.
System configuration.
Structured Data Edit.
(OR sign indicates start of comment).
ructured Data Edit
10.sfmnsam1(fmncdata) using cbl.cbli.sdo(fmncdata); v*
; setpt 68 90; .sde
*** Hierarchical File System ***
2007/08/08 Fname not yet supported.
<ld /ADCD/etc/hosts
<e /ADCD/etc/hosts
<ld /ADCD/etc/booksrv
<ld /ADCD/etc
<ld /mnt
<ld /usr
<ld /var
<ld /tmp
<ld /V1R6
<ld /

```

```

-DRA.CBLI.CMX      255 V SEQ      Size=417      Alt=12,12;15
Command>
|...+...1...+...2...+...3...+...4...+...5...+...6...+...7...
000152 <ams
000153 DEL          DRA.IMBED.KSDS
000154 CLUSTER
000155 PURGE
000156 CATALOG
000157
000158 <ld          DRA.IMBED.KSDS
000159
000160 <ams
000161 DEF CLUSTER (NAME (DRA.IMBED.KSDS)
000162 INDEXED
000163 /* BUFFERSPACE ( 38912)
000164 /* BUFFERSPACE ( 8704)
000165 /* RECORDSIZE ( 23, 4089)
000166 /* RECORDSIZE ( 4089, 4089)
000167 SPEED
000168 STORAGECLASS (CBLDFLT )
000169 MANAGEMENTCLASS(CBLDFLT )
000170 NOWRITECHECK
000171 NONSPANNED
000172 /* FREESPACE ( 84, 28)
000173 /* FREESPACE ( 90, 90)
000174 /* KEYS ( 32, 0)
000175 /* NOIMBED
000176 IMBED
000177 NOREPLICATE
000178 SHAREOPTIONS (1,3)
000179 NOERASE
000180 UNORDERED
000181 NOREUSE
000182 NODESTAGEWAIT
000183 STAGE
000184 )
000185 DATA (NAME (DRA.IMBED.KSDS.DATA)
000186 VOLUMES ('CBLM03'
000187 )
000188 /* CISZ (18432)
000189 /* CISZ (4096)
000190 /* TRACKS ( 3, 3)
000191 /* TRACKS ( 198, 2)
000192 )
000193 INDEX (NAME (DRA.IMBED.KSDS.INDEX)
000194 VOLUMES ('CBLM03'
000195 )
000196 CISZ ( 512)
000197 )
000198 CATALOG (USERCAT.CBLCAT)
000199
.TCP .tcp      *** TCP/IP stuff
000201 <ll cbl.tcpip.ontl | TCP/IP library.

```

Interactive IDCAMS
DELETE

PF4 to execute

Sample Interactive IDCAMS
DEFINE

Any Errors?

```

IDCAMS Error Listing
View Back Forward FDB Edit Refresh Help
Command>

Asa -----Line-----
1 IDCAMS SYSTEM SERVICES
0 MARGINS(1 32760)
0 IDC0001I FUNCTION COMPLETED, HIGHEST CONDITION CODE WAS 0
0
    DEFINE
        INDEXED
        NOERASE
        NONSPANNED
        NOWRITECHECK
        SHAREOPTIONS(1 3)
        DATA(
        NAME(DRA.SAMPLE.KSDS.DATA)
        KEYS(64 0 )
        FREESPACE(0 0 )
        TRACKS (1
        )
        TRACKS (1 1 )
        NAME(DRA.SAMPLE.
        NOIMBED
        NOREPLICATE
0 IDC3506I A REQUIRED VOLUME LIST HAS BEEN OMITTED
0 IDC3003I FUNCTION TERMINATED. CONDITION CODE IS 12
0
0 IDC0002I IDCAMS PROCESSING COMPLETE. MAXIMUM CONDITION CODE WAS 12
    
```

- Def
- Defi
- >
- Clus
- Ma
- But
- D
- Sp
- In
- Sp

```

Scroll> Csr
+. ....5.....+. ....6.....+. ....7.....
tbname='EMP' and tbcreator='LAC
tbname='EMP'

270 Screen Sizes ***

windows,
3270 Screens'
ges
nications', etc)

he 3270 Standard screens:
    
```

```

000284 24 lines x 80 columns (Model-2)
000285 32 lines x 80 columns (Model-3)
000286 43 lines x 80 columns (Model-4)
000287 24 lines x 132 columns (Model-5)
000288
000289 'Massive gains in productivity' can be achieved by using CBLi
000290 having configured your system/emulator for dynamic screens.
000291 ISPF currently supports a maximum screen size of:
000292 62 lines x 160 columns (This is good for 'SDSF' too!)
000293
    
```


Dataset Allocation

- Automatic when new file.
- Library copies.
- Use to generate JCL too.

List Dataset Window

Dataset List: SYS1.M*,**
View Back Forward FDB Edit Refresh Help
Command>
Entry> SYS1.M*,**
Catalog> CATALOG.Z16.MASTER
Types>

Entry	Vol	T	Org	RecFm	Lrecl	Blksz	Alu	-Pri-	-Sec-	-Alt-	Nxt	Tr
CATALOG.Z16.MASTER					0	0		0	0	0	0	
SYS1.MACLIB	Z6RES1	A	PO	FB	80	6160	C	183	5	183	1	2
SYS1.MAN1					0	0		0	0	0	0	
SYS1.MAN1.DATA	Z6SYS1	D	VS	U	0	4096	C	40	0	40	1	
SYS1.MAN2					0	0		0	0	0	0	
SYS1.MAN2.DATA	Z6SYS1	D	VS	U	0	4096	C	10	0	10	1	
SYS1.MAN3					0	0		0	0	0	0	
SYS1.MAN3.DATA	Z6SYS1	D	VS	U	0	4096	C	10	0	10	1	
c SYS1.MIGLIB	Z6RES1	A	PO	U	0	6144	C	57	15	57	1	
SYS1.MODGEN	Z6RES1	A	PO	FB	80	6160	T	489	30	489	1	
SYS1.MSGENP	Z6RES1	A	PO	VB	259	6475	B	56	10	56	1	
SYS1.MSGENU	Z6RES1	A	PO	VB	259	6475	T	34	90	34	1	

Line 1 of 12 | Col 1 of 303 | Views 1 | select * sort Entry,Vol

C SYS

Input 'C' Copy Prefix

Scroll> Csr
+....5....+....6....+....7....
etup.
configuration.
tes start of comment).

ame not yet supported.

<ld sys1.m

PF4 to execute

Execute List dataset command 'ld'

```

000020 <ld /ADCD/etc/booksrv
000021 <ld /ADCD/etc
000022 <ld /mnt
000023 <ld /usr
000024 <ld /var
000025 <ld /tmp
000026 <ld /VIRG
000027 <ld /
MY .my *** My MVS Stuff
000029 <ld sys1.m
000030 <ld /ADCD/etc/hosts
000031 <ll cbl.dist.cbli.dist.cmx
000032 <ll cbl.dist.cbli.dist.cbli
000033 <e cbl.cbli.ini
000034 <eini
000035 <ll cbl.cmx
000036 <lv ol z*
000037 <ll dra.lib.jcl
000038 <ll dra.cbli.cbli
000039 <ll adcd.lib.jcl
000040 <lv
000041 <lx _volume
000042 <lv ol
000043 <OQ
000044 <OP
000045 <OP d a,l

```

```

*** 2007/07/13
list all libs prefixed sys1.m
HFS datasets.
cbli distributed cmx.
cbli distributed macros.
edit system ini file.
Edit user ini file.

list vols.
list all JCL files.
list all my macro files.
list adcd sample jcl's.
list vtoc.
VTOC Extent list.
Dasd volumes list.
sdsf Output queue.
Operator Console.
List started tasks.

```

```

-Dataset List: SYS1.M*,**
View Back Forward FDB Edit Refresh Help
Command>
Entry> SYS1.M*,**
Catalog> CATALOG.Z16.MASTER
Types>
-----Entry----- -Vol-- T Org RecFm Lrecl Blksz Alu -Pri- -Sec- -Alt- Nxt Tr
CATALOG.Z16.MASTER          0      0      0      0      0      0
SYS1.MACLIB                Z6RES1 A PO FB      0  6160 C    183    5  183    1  2
SYS1.MAN1                   C          0      0      0      0      0
SYS1.MAN1.DATA             Z6SYS1 D VS U      0  4096 C     40    0   40    1
SYS1.                       0
SYS1.                       1
SYS1.                       0
SYS1.                       1
SYS1.                       1
SYS1.                       1
SYS1.                       1
SYS1.                       1

```

```

-Execute IEBCOPY
Command>
Enter the IEBCOPY output file name
PDSIn> SYS1.MIGLIB
PDSOut>
The following are optional parameters:
OldName>          Old member name pattern
NewName>          New member name pattern
Replace> NO       Replace like named members
MWCC> *           Multiple wild card character
SMCC> %           Single wild card character
Output> NO        View IEBCOPY output listing
Copy JCL Cancel Help

```

```

Scroll> Csr
+....5....+....6....+....7....
etup.
configuration.
tes start of comment).
***
ame not yet supported.

```

'C' prefix results in an IEBCOPY panel

```

.MY .my *** My MVS Stuff
000029 <ld sys1.m
000030 <ld /ADCD/etc/hosts
000031 <ll cbl.dist.cbli.dist.cmx
000032 <ll cbl.dist.cbli.dist.cble
000033 <e cbl.cbli.ini
000034 <eini
000035 <ll cbl.cmx
000036 <lvol z*
000037 <ll dra.lib.jcl
000038 <ll dra.cbli.cble
000039 <ll adcd.lib.jcl
000040 <lv
000041 <lx _volume
000042 <lvol
000043 <OQ
000044 <OP
000045 <OP d a,l

*** 2007/07/13
list all libs prefixed sys1.m
HFS datasets.
cbli distributed cmx.
cbli distributed macros.
edit system ini file.
Edit user ini file.

list vols.
list all JCL files.
list all my macro files.
list adcd sample jcl's.
list vtoc.
VTOC Extent list.
Dasd volumes list.
sdsf Output queue.
Operator Console.
List started tasks.

```

-CBLi for TSO 1.5B - Build=200710231123 OpSys=z/OS 1.6.0 User=DRA
File List Utilities System Window SwapList Help
-CBLi
File Edit Actions Options Window Help ? Sv ToF BoF wS wR Pfx < >

-Dataset List: SYS1.M*.**

View Back Forward FDB Edit Refresh Help
Command>
Entry> SYS1.M*.**
Catalog> CATALOG.Z16.MASTER
Types>

Entry	Vol	T	Org	RecFm	Lrecl	Blksz	Alu	-Pri-	-Sec-	-Alt-	Nxt	Tr
CATALOG.Z16.MASTER					0	0		0	0	0	0	
SYS1.MACLIB	Z6RES1	A	PO	FB	80	6160	C	183	5	183	1	2
SYS1.MAN1					0	0		0	0	0	0	
SYS1.MAN1.DATA	Z6SYS1	D	VS	U	0	4096	C	40	0	40	1	

Insert New Name

Select Member Name(s)

Select to Copy in Foreground

Select to generate JCL deck

-Execute IEBCOPY

Command>

PDSIn> SYS1.MIGLIB
PDSOut> DRA.MIGLIB

The following are optional parameters:

OldName> A* Old member name pattern
NewName> New member name pattern
Replace> NO Replace like named members
MWCC> * Multiple wild card character
SMCC> % Single wild card character
Output> NO View IEBCOPY output listing

Copy JCL Cancel Help

-Csr

Scroll> Csr

+...5...+...6...+...7...
etup.
configuration.
tes start of comment).

ame not yet supported.

```
.MY .my *** My MVS Stuff
000029 <ld sys1.m
000030 <ld /ADCD/etc/hosts
000031 <ll cbl.dist.cbli.dist.cmx
000032 <ll cbl.dist.cbli.dist.cble
000033 <e cbl.cbli.ini
000034 <eini
000035 <ll cbl.cmx
000036 <lvol z*
000037 <ll dra.lib.jcl
000038 <ll dra.cbli.cbli
000039 <ll adcd.lib.jcl
000040 <lv
000041 <lx _volume
000042 <lvol
000043 <OQ
000044 <OP
000045 <OP d a,l

*** 2007/07/13
list all libs prefixed sys1.m
HFS datasets.
cbli distributed cmx.
cbli distributed macros.
edit system ini file.
Edit user ini file.

list vols.
list all JCL files.
list all my macro files.
list adcd sample jcl's.
list vtoc.
VTOC Extent list.
Dasd volumes list.
sdsf Output queue.
Operator Console.
List started tasks.
```

-IEBCOPY.JCL 80 F SEQ Size=90 Alt=0,0;0

Command> |...+...1...+...2...+...3...+...4...+...5...+...6...+...7...+...> Scroll> Csr

```

000001 // EXEC PGM=IEBCOPY
000002 //IPDS DD DISP=SHR,DSN=SYS1.MIGLIB
000003 //OPDS DD DISP=(NEW,CATLG,DELETE),
000004 // DSN=DRA.MIGLIB,
000005 // DSNTYPE=PDS,
000006 // UNIT=3390,
000007 // DCB=(*,IPDS),
000008 // SPACE=(CYL,(57,15,300),RLSE)
000009 //SYSPRINT DD SYSOUT=*
000010 //SYSIN DD *
000011 COPY INDD=(IPDS),OUTDD=OPDS,LIST=YES
000012 SELECT MEMBER=(ADYEXT)
000013 SELECT MEMBER=(ADYGETSM)
000014 SELECT MEMBER=(ADYHDFMT)
000015 SELECT MEMBER=(AHLFCGTF)
000016 SELECT MEMBER=(AHLFCOPY)
000017 SELECT MEMBER=(AHLFCWRT)
000018 SELECT MEMBER=(AHLFFP)
000019 SELECT MEMBER=(AHLFINIT)
000020 SELECT MEMBER=(AHLFVEC)
000021 SELECT MEMBER=(AHLTWINT)
000022 SELECT MEMBER=(AHLWINIT)
000023 SELECT MEMBER=(AHLWRITE)
000024 SELECT MEMBER=(AMASPZAP)
000025 SELECT MEMBER=(AMAZAP)
000026 SELECT MEMBER=(AMDPRFMT)
000027 SELECT MEMBER=(AMDSAFCM)
000028 SELECT MEMBER=(AMDSAINI)
000029 SELECT MEMBER=(AMDUSRDA)
000030 SELECT MEMBER=(AMDUSRFD)
000031 SELECT MEMBER=(AMDUSR57)
000032 SELECT MEMBER=(ASADSNV)
000033 SELECT MEMBER=(ASAHFMAP)
000034 SELECT MEMBER=(ASAHMMAP)
000035 SELECT MEMBER=(ASAMIMSA)
000036 SELECT MEMBER=(ASAMIMSB)
000037 SELECT MEMBER=(ASAMIMSE)
000038 SELECT MEMBER=(ASAMIMSP)
000039 SELECT MEMBER=(ASAMIMST)
000040 SELECT MEMBER=(ASASYMBM)
000041 SELECT MEMBER=(ASAWILDA)
000042 SELECT MEMBER=(ASAWILDB)
000043 SELECT MEMBER=(ASAWILDC)
000044 SELECT MEMBER=(ASBDAML)
000045 SELECT MEMBER=(ASEASEIP)
000046 SELECT MEMBER=(ASMADOP)
000047 SELECT MEMBER=(ASRKEYS)
000048 SELECT MEMBER=(ASRPRIT)
000049 SELECT MEMBER=(ASRROUT)
000050 SELECT MEMBER=(ASRSYMV)

```

JCL Deck Generated

```

u -Pri- -Sec- -Alt- Nxt Tr
  0      0      0      0
183     5     183    1  2
  0      0      0      0
 40      0     40     1
  0      0      0      0
 10      0     10     1
  0      0      0      0
 10      0     10     1
 57     15     57     1
489     30    489     1
 56     10     56     1
 34     90     34     1

```

Entry,Vol

booksrv

My MVS Stuff

```

osts
li.dist.cmx
li.dist.cble

```

```

le
l

```

```

*** 2007/07/13
list all libs prefixed sys1.m
HFS datasets.
cbli distributed cmx.
cbli distributed macros.
edit system ini file.
Edit user ini file.

```

```

list vols.
list all JCL files.
list all my macro files.
list adcd sample jcl's.
list vtoc.
VTOC Extent list.
Dasd volumes list.
sdsf Output queue.
Operator Console.
List started tasks.

```

Navigation

- Intuitive drill down capability for:
 - DASD Lists.
 - VTOC Lists.
 - Dataset Lists.
 - Library Lists.
- Each with extended functionality for:
 - Select, subset and sort syntax

LD command with additional sub commands.

Resulting List Window

```

-DRA.CBLI.CMX 255 V SEQ Size=418 Alt=2,2;18
Command>
<...+...1...+...2...+...3...+...|4...+...5...+...6...+...7...
000019 <sd edit fmn510.sfmnsam1(fmncdata) using cbl.cbli.sdo(fmncdata); v*
000020 <e cbl.cmx(jge); setpt 68 90; .sde
000021 <e cbl.cmx(jge)
000022
.HFS .hfs *** Hierarchical File System ***
000024 <ld /ADCD/etc/hosts | 2007/08/08 Fname not yet supported.
000025 <e /ADCD/etc/hosts
000026 <ld /ADCD/etc/booksrv
000027 <ld /ADCD/etc
000028 <ld /mnt
000029 <ld /usr
000030 <ld /var
000031 <ld /tmp
000032 <ld /V1R6
000033 <ld /
.M .my *** My MVS Stuff *** 2007/07/13
000035 <ld sys1.m | list all libs prefixed sys1.m
000036 <ld sys1; where ORG=PO and (RECFM='V' or RECFM='VB')
000037 <ld /ADCD/etc/hosts | HFS datasets.
000038 <ll cbl.dist.cbli.dist.cmx | cbl distributed cmx.
000039 <ll cbl.dist.cbli.dist.cble | cbl distributed macros.
| edit system ini file.
| Edit user ini file.

list vols.
list all JCL files.
list all my macro files.
list addc sample jcl's.
list vtoc.
VTOC Extent list.
Dasd volumes list.
sdsf Output queue.
Operator Console.
List started tasks.
List disk devices.
Start ISPF Utilities.
Start SDSF.
List files with my user id.
Faster, but less information.
List Allocated datasets with my user.
Use SELECT/WHERE/SORT from any list.
List all allocated files.
List libr members changed by me today
%; where User = %user% & LastMod => %date%
Use an EQUate variable.
to affect subsequent commands.
List datasets with %SitePfx%.CBLI.
User = %user% & LastMod => %date%
List CBL distributed macros.
Standard LV showing all files.

000066 <ll %SitePfx%.CBLI.Site.CBLI ; where
000067 <ll %SitePfx%.CBLI.Dist.CBLI
000068 <lv ZZRES1

```

PF4 to execute

Dataset List: SYS1.**

View Back Forward FDB Edit Refresh Help

Command>

Entry> SYS1.**

Catalog> CATALOG.Z16.MASTER

Types>

Entry	Vol	T	Org	RecFm	Lrecl	Blksz	Alu	Pri	Sec	Alt	Nxt	Trks
SYS1.AAPPDAT2	Z6D1S2	A	PO	VB	259	6475	B	24	10	24	1	3
SYS1.ABPXXMLS	Z6D1S2	A	PO	VB	256	27998	B	6	30	6	1	3
SYS1.ACBDHFHS	Z6D1S2	A	PO	VB	255	27998	B	2	1	2	1	1
SYS1.ACUNHF	Z6D1S2	A	PO	VB	255	27998	B	6	2	6	1	3
SYS1.ACUNMENU	Z6D1S2	A	PO	VB	259	27998	B	2	5	2	1	1
SYS1.ACUNMJPN	Z6D1S2	A	PO	VB	259	27998	B	2	5	2	1	1
SYS1.ADBBLIB	Z6D1S2	A	PO	VB	80	8800	T	46	15	46	1	46
SYS1.ADFQPSRC	Z6D1S2	A	PO	VB	255	9076	B	50	8	50	1	10
SYS1.ADGTTPSRC	Z6D1S2	A	PO	VB	255	9076	T	155	15	155	1	155
SYS1.ADGTTPSRC	Z6D1S2	A	PO	VB	255	9076	B	10	5	10	1	2
SYS1.AEDGPPSRC	Z6D1S2	A	PO	VB	255	9076	T	38	5	38	1	38
SYS1.AERBPWSV	Z6D1S2	A	PO	VB	255	27998	C	109	5	109	1	1635
SYS1.AFOMDATA	Z6D1S2	A	PO	VB	255	27998	T	114	15	114	1	114
SYS1.AFOMHFS	Z6D1S2	A	PO	VB	255	27998	C	798	45	798	1	11970
SYS1.AHASHMENU	Z6D1S2	A	PO	VB	259	27998	B	6	7	6	1	3
SYS1.AIEAHDV	Z6D1S2	A	PO	VB	260	27998	B	2	24	2	1	1

Line 1 of 42 | Col 1 of 300 | Views 2 | select * where ORG=PO and (RECFM='V' or

Command> select entry vol recfm lrecl blksz
Entry> SYS1.**

```

-DRA.CBLI.CMX 255 V SEQ Size=418 Alt=2,2;18
Command>
[...+...1...+...2...+...3...+...4...+...5...+...6...+...7...
000019 <sd edit fmn510.sfmsam1(fmncdata) using cbl.cbli.sdo(fmncdata); v*
000020 <e cbl.cmx(jge); setpt 68 90; .sde
000021 <e cbl.cmx(jge)
000022
.HFS .hfs *** Hierarchical File System ***
000024 <ld /ADCD/etc/hosts | 2007/08/08 Fname not yet supported.
000025 <e /ADCD/etc/hosts
000026 <ld /ADCD/etc/booksrv
000027 <ld /ADCD/etc
000028 <ld /mnt
000029 <ld /usr
000030 <ld /var
000031 <ld /tmp
000032 <ld /V1R6
000033 <ld /
.HMY .my *** My MVS Stuff *** 2007/07/13
000035 <ld
000036 <ld
000037 <ld
000038 <ll
000039 <ll

```

Refine the search further via the command line.

Dataset List: SYS1.**
View Back Forward FDB Edit Refresh Help
Command> select entry vol recfm lrecl blksz
Entry> SYS1.**
Catalog> CATALOG.Z16.MASTER

Types	Entry	Vol	T	Org	Recfm	Lrecl	Blksz	Alu	-Pri-	-Sec-	-Alt-	Nxt	Trks-
	SYS1.AAPPDAT2	Z6DIS2	A	PO	YB	259	6475	B	24	10	24	1	3
	SYS1.ABPXXMLS	Z6DIS2	A	PO	YB	256	27998	B	6	30	6	1	3
	SYS1.ACBDEHFS	Z6DIS2	A	PO	YB	255	27998	B	2	1	2	1	1
	SYS1.ACUNHF	Z6DIS2	A	PO	YB	255	27998	B	6	2	6	1	3
	SYS1.ACUNHMENU	Z6DIS2	A	PO	YB	259	27998	B	2	5	2	1	1
	SYS1.ACUNHJPN	Z6DIS2	A	PO	YB	259	27998	B	2	5	2	1	1
	SYS1.ADBBLIB	Z6DIS2	A	PO	YB	80	8800	T	46	15	46	1	46
	SYS1.ADFQP3RC	Z6DIS2	A	PO	YB	255	9076	B	50	8	50	1	10
	SYS1.ADGTP3RC	Z6DIS2	A	PO	YB	255	9076	T	155	15	155	1	155
	SYS1.ADGTTRC	Z6DIS2	A	PO	YB	255	9076	B	10	5	10	1	2
	SYS1.AEDG3RC	Z6DIS2	A	PO	YB	255	9076	T	38	5	38	1	38
	SYS1.AERBPMSV	Z6DIS2	A	PO	YB	255	27998	C	109	5	109	1	1635
	SYS1.AFOMDATA	Z6DIS2	A	PO	YB	255	27998	T	114	15	114	1	114
	SYS1.AFOMHFS	Z6DIS2	A	PO	YB	255	27998	C	798	45	798	1	11970
	SYS1.AHASHMENU	Z6DIS2	A	PO	YB	259	27998	B	6	7	6	1	3
	SYS1.ATEAHDRY	Z6DIS2	A	PO	YB	260	27998	B	2	24	2	1	1

Line 1 of 42 | Col 1 of 300 | Views 3 select * where ORG=PO and (RECFM='Y' or

```

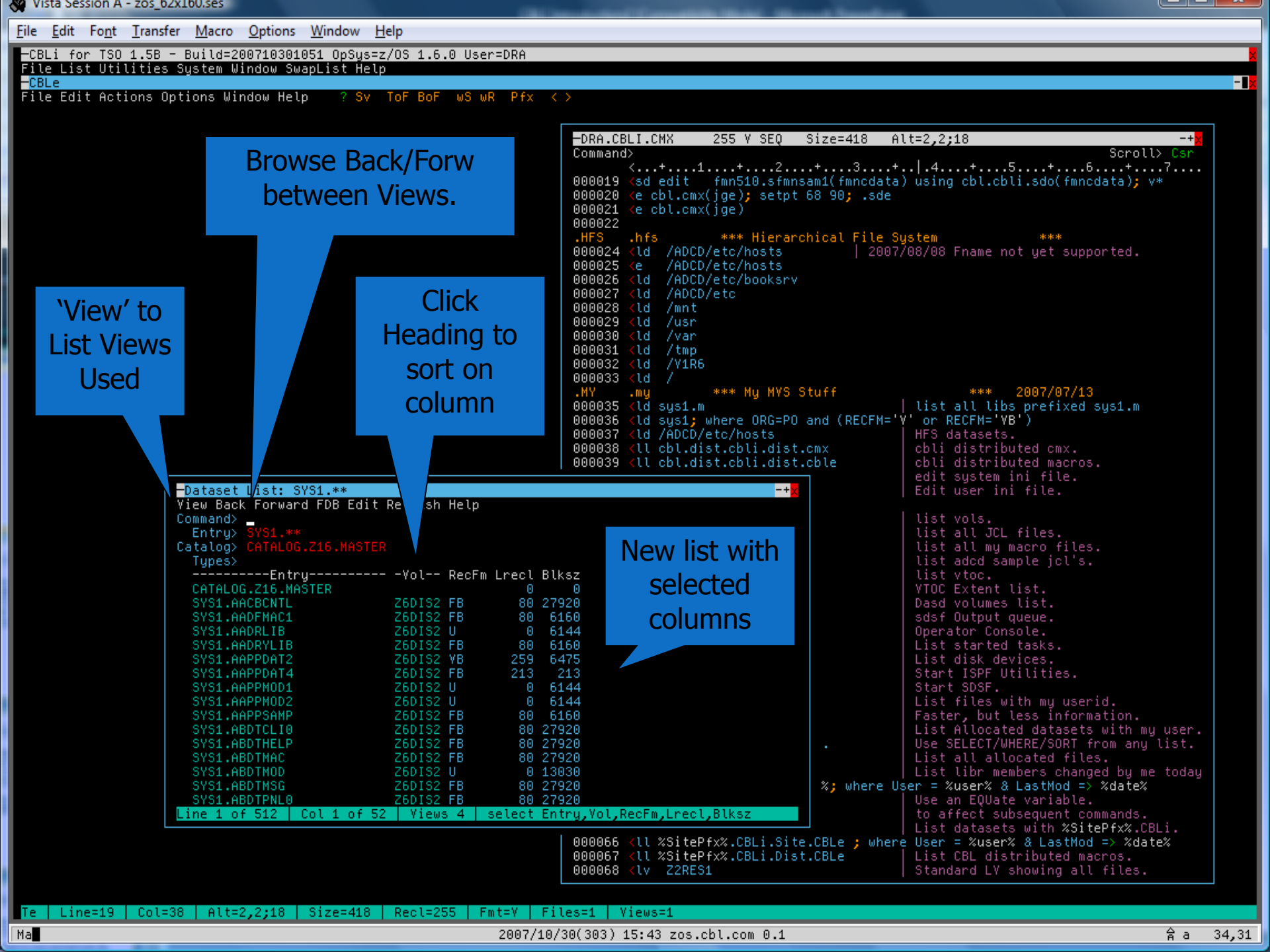
list vols.
list all JCL files.
list all my macro files.
list addd sample jcl's.
list vtoc.
VTDC Extent list.
Dasd volumes list.
sdsf Output queue.
Operator Console.
List started tasks.
List disk devices.
Start ISPF Utilities.
Start SDSF.
List files with my userid.
Faster, but less information.
List Allocated datasets with my user.
Use SELECT/WHERE/SORT from any list.
List all allocated files.
List libr members changed by me today
%; where User = %user% & LastMod => %date%
Use an EQUate variable.
to affect subsequent commands.
List datasets with %SitePfx%.CBLI.
User = %user% & LastMod => %date%
List CBL distributed macros.
Standard LV showing all files.

```

```

000066 <ll %SitePfx%.CBLI.Site.CBLI ; where
000067 <ll %SitePfx%.CBLI.Dist.CBLI
000068 <lv Z2RES1

```

Browse Back/Forw
between Views.

'View' to
List Views
Used

Click
Heading to
sort on
column

New list with
selected
columns

Dataset List: SYS1.**

View Back Forward FDB Edit Refresh Help

Command>

Entry> SYS1.**

Catalog> CATALOG.Z16.MASTER

Types>

-----Entry-----	-Vol--	RecFm	Lrecl	Blksz
CATALOG.Z16.MASTER			0	0
SYS1.AACBCNTL	Z6DIS2	FB	80	27920
SYS1.AADFMAC1	Z6DIS2	FB	80	6160
SYS1.AADRLIB	Z6DIS2	U	0	6144
SYS1.AADRYLIB	Z6DIS2	FB	80	6160
SYS1.AAPPDAT2	Z6DIS2	YB	259	6475
SYS1.AAPPDAT4	Z6DIS2	FB	213	213
SYS1.AAPPMOD1	Z6DIS2	U	0	6144
SYS1.AAPPMOD2	Z6DIS2	U	0	6144
SYS1.AAPPSAMP	Z6DIS2	FB	80	6160
SYS1.ABDTCLIO	Z6DIS2	FB	80	27920
SYS1.ABDTHelp	Z6DIS2	FB	80	27920
SYS1.ABDTHAC	Z6DIS2	FB	80	27920
SYS1.ABDTHOD	Z6DIS2	U	0	13030
SYS1.ABDTHSG	Z6DIS2	FB	80	27920
SYS1.ABDTPNL0	Z6DIS2	FB	80	27920

Line 1 of 512 | Col 1 of 52 | Views 4 | select Entry,Vol,RecFm,Lrecl,Blksz

```

-DRA.CBLI.CMX 255 V SEQ Size=418 Alt=2,2;18
Command>
<...+...1...+...2...+...3...+...4...+...5...+...6...+...7...
000019 <sd edit fmn510.sfmnsm1(fmncdata) using cbl.cbli.sdo(fmncdata); v*
000020 <e cbl.cmx(jge); setpt 68 90; .sde
000021 <e cbl.cmx(jge)
000022
.HFS .hfs *** Hierarchical File System ***
000024 <ld /ADCD/etc/hosts | 2007/08/08 Fname not yet supported.
000025 <e /ADCD/etc/hosts
000026 <ld /ADCD/etc/booksrv
000027 <ld /ADCD/etc
000028 <ld /mnt
000029 <ld /usr
000030 <ld /var
000031 <ld /tmp
000032 <ld /V1R6
000033 <ld /
.HY .my *** My MVS Stuff *** 2007/07/13
000035 <ld sys1.m | list all libs prefixed sys1.m
000036 <ld sys1; where ORG=PO and (RECFM='Y' or RECFM='YB')
000037 <ld /ADCD/etc/hosts | list all my macro files.
000038 <ll cbl.dist.cbli.dist.cmx | list addd sample jcl's.
000039 <ll cbl.dist.cbli.dist.cble | list vtoc.
| VTDC Extent list.
| Dasd volumes list.
| sdsf Output queue.
| Operator Console.
| List started tasks.
| List disk devices.
| Start ISPF Utilities.
| Start SDSF.
| List files with my userid.
| Faster, but less information.
| List Allocated datasets with my user.
| Use SELECT/WHERE/SORT from any list.
| List all allocated files.
| List libr members changed by me today
| %; where User = %user% & LastMod => %date%
| Use an EQUate variable.
| to affect subsequent commands.
| List datasets with %SitePfx%.CBLi.
| User = %user% & LastMod => %date%
| List CBL distributed macros.
| Standard LV showing all files.

```

Customisation

- System Macros extend Interactive capability.
 - Customers can add their own new functions.
 - REXX based.
 - Many Samples provided.
- Keyboard mapping.
 - Key map files available for common tn3270 clients.
 - Customisable to requirements.

HELP provides full HTML help on any command.

'HELP arg' for selective help

Home Command centre file is created when user starts for first time.

```

-CBL.CMX(FIRSTMVS) 252 V PDSE Size=969 Alt=0,0;0
Command> help
.....1.....2.....3.....4.....5.....6.....7.....
000051 This is achieved by placing an underscore (_) character within
000052 the command at the appropriate spot, e.g.
000053 >edit sys1.maclib(_acb)
000054
000055 Continuation of a long command-line may be achieved by including a
000056 backslash (x'E0') as the 'last character' on the line, e.g.
000057 <immediate 'dialog #This command is continued \
000058 on the next line.#'
000059
000060 Just so you get a feel for it, here's a few others to try:
000061 <tso help profile
000062 <tsoc help alloc
000063
000064 The vertical-bar (x'4F') can be used to separate command-text
000065 from comment-text (or further commands) on the same line, e.g.
000066 'Note:' The following command will open a separate 'list window'.
000067 Use 'PF3' to close the new window.
000068 Use 'PF9' to scroll through all open windows.
000069 <lvoll CBLi integrated 'List VOLUMES' command.
000070 Press 'ENTER' on any list item to get a 'file-list'...
000071 then 'ENTER' on any dataset to 'edit' it.
000072 (For PDS datasets a 'library-list' will appear).
000073
000074 For readability purposes, the reverse-apostrophe (`) character
000075 (X'79') can also be used within a command, in order to line-up
000076 like items within a group of similar commands. All ` characters
000077 are removed from the command string before execution.
000078 You will see examples of this later on.
000079
000080
000081
000082
000083 ** Windowed Display System *** .win
000084 All CBLi display-windows can be moved, resized, maximised,
000085 restored etc, in a fashion similar to PC Windows, by 'clicking'
000086 the window-borders, title-Bar or '-+x' buttons.
000087 (Clicking means move-cursor/hit-ENTER.
000088 'Try setting your Mouse to do this!')
000089 Grab the window-border with the first click, move cursor to a new
000090 location, second click reshapes the window. Try it now!
000091 Also try 'dragging' using the scrolling keys 'PF7/8' and 'PF10/11'.
000092
000093
000094 Having found your perfect window size/shape/position for a
000095 particular file, you may wish to 'Save' its characteristics,
000096 allowing 'Restore' in this and future sessions.
000097 Use the yellow 'wS' and 'wR' buttons in the CBLi menu bar, or
000098 <WinX Save Save current window size/pos - Same as 'wS' button.
000099 <WinX Restore Restore it - Same as 'wR' button.
000100 | 'Note:' This feature is currently supported for edit windows only.

```

CBLe Text Editor Contents

Back Forward Home Close Source Text Help

Command>

Location>

[Main Help](#) [CBLi](#) [next](#)

CBLe Text Editor Contents

[Documentation Notes](#)

[Introduction to the CBLe](#)

[CBLe Main Window](#)

[CBLe Document Window](#)

[CBLe List Window](#)

[CBLe Find Dialog Window](#)

[CBLe Change Dialog Window](#)

[CBLe Sort Dialog Window](#)

[CBLe Fill Dialog Window](#)

[Editing Large Files](#)

[Editing VSAM Files](#)

[Focus Line and Column](#)

[Using Marked Blocks](#)

[Targets](#)

[Line Targets \(line-target\)](#)

[Column Targets \(column-target\)](#)

[Group Targets \(group-target\)](#)

[CBLe Environment Variables](#)

[Variable Types](#)

[Variable Substitution](#)

line 1 of 409 Col 1 of 79 File: CBL.DIST.CBLI.HELP.HTML(edtconte)

HTML help Window

```

(TMVS) 252 V PDSE Size=969 Alt=0,0;0
...1....+...2....+...3....+...4....+...5....+...6....+...7....+...
is achieved by placing an underscore (_) character within
command at the appropriate spot, e.g.
sys1.maclib(_acb)

ination of a long command-line may be achieved by including a
slash (x'E0') as the 'last character' on the line, e.g.
iate 'dialog #This command is continued \
next line.#'

so you get a feel for it, here's a few others to try:
help profile
help alloc

vertical-bar (x'4F') can be used to separate command-text
comment-text (or further commands) on the same line, e.g.
ote:' The following command will open a separate 'list window'.
Use 'PF3' to close the new window.
Use 'PF9' to scroll through all open windows.
CBLe integrated 'List VOLUMES' command.
Press 'ENTER' on any list item to get a 'file-list'...
then 'ENTER' on any dataset to 'edit' it.
(For PDS datasets a 'library-list' will appear).

readability purposes, the reverse-apostrophe (`) character
9') can also be used within a command, in order to line-up
items within a group of similar commands. All ` characters
removed from the command string before execution.
will see examples of this later on.

** Windowed Display System *** .win
CBLe display-windows can be moved, resized, maximised,
ored etc, in a fashion similar to PC Windows, by 'clicking'
window-borders, title-Bar or '-+x' buttons.
clicking means move-cursor/hit-ENTER.
'Try setting your Mouse to do this!')
the window-border with the first click, move cursor to a new
tion, second click reshapes the window. Try it now!
try 'dragging' using the scrolling keys 'PF7/8' and 'PF10/11'.

ng found your perfect window size/shape/position for a
icular file, you may wish to 'Save' its characteristics,
wing 'Restore' in this and future sessions.
the yellow 'wS' and 'wR' buttons in the CBLe menu bar, or
Save | Save current window size/pos - Same as 'wS' button.
Restore | Restore it - Same as 'wR' button.
te:' This feature is currently supported for edit windows only.

```

SELCOPY DEBUG

- The original concept for development.
 - Set Break Points.
 - Track pointer variables.
 - Watch data change as you step through the control statements.
 - Modify program and rerun.
 - Multiple windows to show code, storage, work area, output listing.

Execute EQU for Site Prefix Variable (PF4)

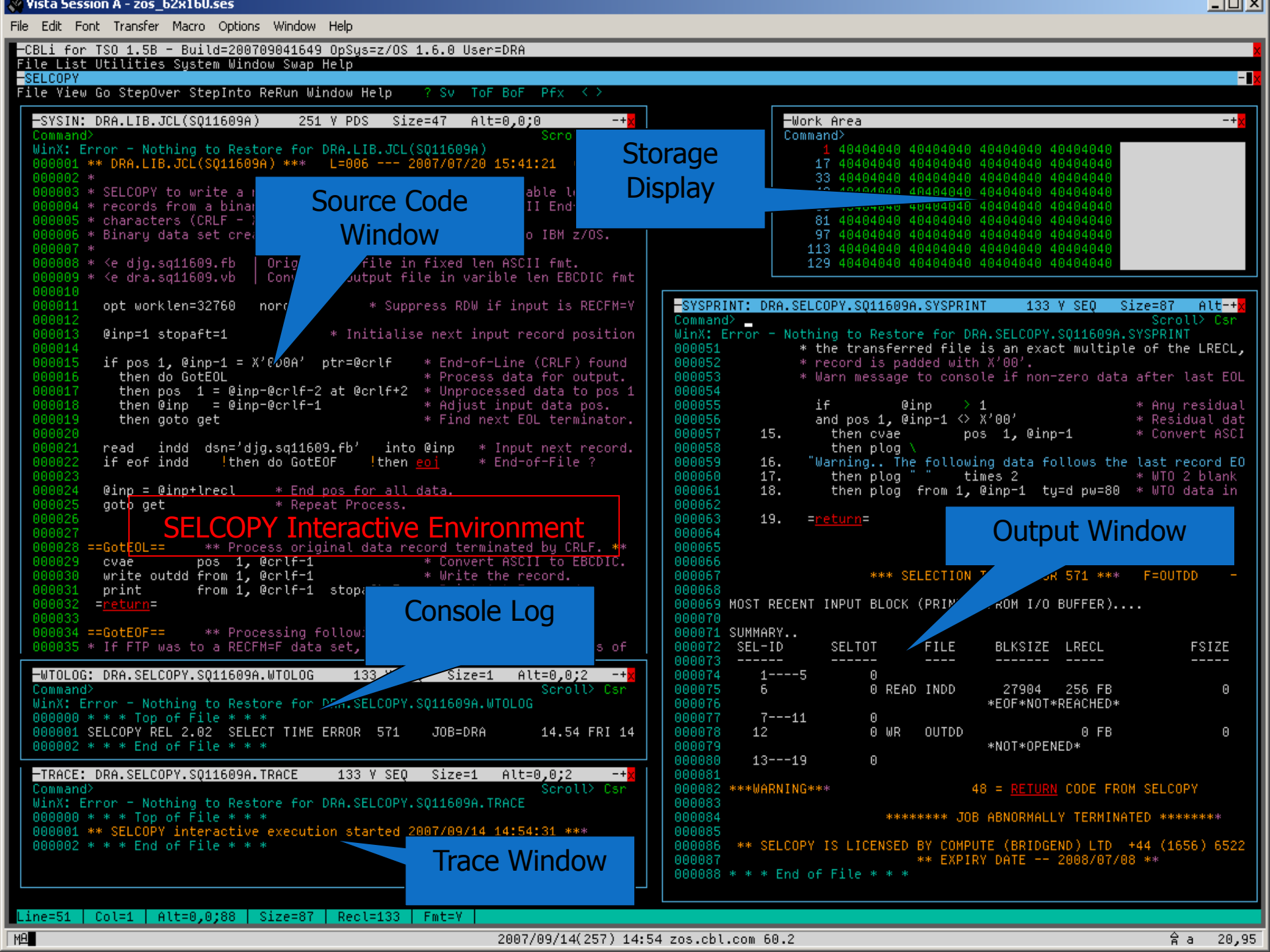
EQUates can be used to preset variables

Start SELCOPY Interactive Debug (PF4)

```

DRA.CBLI.CMX 255 V SEQ Size=722 Alt=0,0;2
Command>
|...+...1...+...2...+...3...+...4...+...5...+...6...+...7...
.SI .si *** SELCOPY Interactive - IVP *** .si
000304 <ld CBL.DIST.S202
000305 <equ SitePfx CBL.DIST.S202
000306 <e %SitePfx%.txt(SELCIVP) | Step through, set breaks etc.
000307 <selcopy -ctl %SitePfx%.txt(SELCIVP) | Step through, set breaks etc.
000308
000309 <equ SitePfx dra.lib.jcl
000310 <e %SitePfx%(SELC1) | Step through, set breaks etc.
000311 <selcopy -ctl %SitePfx%(SELC1) | Step through, set breaks etc.
000312 <selcopy -ctl %SitePfx%(SELCIVP1) | Step through, set breaks etc.
.VCAT .vcat *** CBLVCAT Interactive - IVP *** .vcat
000314 <CBLi vcat query cblname | Or any valid CBLVCAT command.
000315 <volstats z6resi
000316
000317 < vcat lc ref=cbl.ksds.reuse key=cbl.ksds.reuse
000318
000319 < vcat lc ref=USERCAT.CBLCAT key=cbl.ssc.ctl
000320 < lvr lc ref=USERCAT.CBLCAT ty=k
000321 < list lvr /lc ref=USERCAT.CBLCAT key=cbl.ssc.ctl/
000322 < list lvr /lc ref=USERCAT.CBLCAT/ subset /WHERE PCNT>>' & PCNT > ' 5
000323 < lvr lv vol=cbl* key=jge
000324
000325 <CBLi v lv vol=CBLM05 freetab
000326 <CBLi v lc key=dra
000327 <CBLi v lc key=jge tune
000328 <CBLi v lc key=djh
000329 <CBLi v lc key=jge
000330 <CBLi v lc key=cbl ty=m
000331 <CBLi v lv vol=cblm01
000332 <CBLi v report vcat dsn type sortd ext timestmp
000333 <CBLi v lc ref=cbl
000334

```



```
-SYSIN: DRA.LIB.JCL(SQ11609A) 251 V PDS Size=47 Alt=0,0;0 -+X
Command>
WinX: Error - Nothing to Restore for DRA.LIB.JCL(SQ11609A)
000001 ** DRA.LIB.JCL(SQ11609A) *** L=006 --- 2007/07/20 15:41:21
000002 *
000003 * SELCOPY to write a
000004 * records from a binar
000005 * characters (CRLF -
000006 * Binary data set cre
000007 *
000008 * <e djg.sq11609.fb Orig
000009 * <e dra.sq11609.vb Con
000010
000011 opt worklen=32760 norc
000012
000013 @inp=1 stopaft=1
000014
000015 if pos 1, @inp-1 = X'000A' ptr=@crlf
000016 then do GotEOL
000017 then pos 1 = @inp-@crlf-2 at @crlf+2
000018 then @inp = @inp-@crlf-1
000019 then goto get
000020
000021 read indd dsn='djg.sq11609.fb' into @inp
000022 if eof indd !then do GotEOF !then eoi
000023
000024 @inp = @inp+recl
000025 goto get
000026
000027 ==GotEOL==
000028 ==GotEOL== ** Process original data record terminated by CRLF. **
000029 cvae pos 1, @crlf-1
000030 write outdd from 1, @crlf-1
000031 print from 1, @crlf-1 stopa
000032 =return=
000033
000034 ==GotEOF==
000035 * If FTP was to a RECFM=F data set,
```

Source Code Window

Storage Display

```
-Work Area -+X
Command>
1 40404040 40404040 40404040 40404040
17 40404040 40404040 40404040 40404040
33 40404040 40404040 40404040 40404040
49 40404040 40404040 40404040 40404040
65 40404040 40404040 40404040 40404040
81 40404040 40404040 40404040 40404040
97 40404040 40404040 40404040 40404040
113 40404040 40404040 40404040 40404040
129 40404040 40404040 40404040 40404040
```

SELCOPY Interactive Environment

Console Log

```
-SYSPRINT: DRA.SELCOPY.SQ11609A.SYSPRINT 133 V SEQ Size=87 Alt=-+X
Command>
WinX: Error - Nothing to Restore for DRA.SELCOPY.SQ11609A.SYSPRINT
000051 * the transferred file is an exact multiple of the LRECL,
000052 * record is padded with X'00'.
000053 * Warn message to console if non-zero data after last EOL
000054
000055 if
000056 and pos 1, @inp-1 <> X'00'
000057 then cvae pos 1, @inp-1
000058 then plog \
000059 "Warning.. The following data follows the last record EO
000060 then plog " times 2
000061 then plog from 1, @inp-1 ty=d pw=80
000062
000063 =return=
000064
000065
000066
000067
000068 *** SELECTION 1 FROM 571 *** F=OUTDD
000069
000070 MOST RECENT INPUT BLOCK (PRIMARY FROM I/O BUFFER)....
000071
000072 SUMMARY..
000073
000074 1----5 0
000075 6 0 READ INDD 27904 256 FB 0
000076 *EOF*NOT*REACHED*
000077 7---11 0
000078 12 0 WR OUTDD 0 FB 0
000079 *NOT*OPENED*
000080 13---19 0
000081
000082 ***WARNING*** 48 = RETURN CODE FROM SELCOPY
000083
000084 ***** JOB ABNORMALLY TERMINATED *****
000085
000086 ** SELCOPY IS LICENSED BY COMPUTE (BRIDGEND) LTD +44 (1656) 6522
000087 ** EXPIRY DATE -- 2008/07/08 **
000088 * * * End of File * * *
```

Output Window

Trace Window

```
-WTOLOG: DRA.SELCOPY.SQ11609A.WTOLOG 133 V SEQ Size=1 Alt=0,0;2 -+X
Command>
WinX: Error - Nothing to Restore for DRA.SELCOPY.SQ11609A.WTOLOG
000000 * * * Top of File * * *
000001 SELCOPY REL 2.02 SELECT TIME ERROR 571 JOB=DRA 14.54 FRI 14
000002 * * * End of File * * *
```

```
-TRACE: DRA.SELCOPY.SQ11609A.TRACE 133 V SEQ Size=1 Alt=0,0;2 -+X
Command>
WinX: Error - Nothing to Restore for DRA.SELCOPY.SQ11609A.TRACE
000000 * * * Top of File * * *
000001 ** SELCOPY interactive execution started 2007/09/14 14:54:31 **
000002 * * * End of File * * *
```

-CBLI for TSO 1.5B - Build=200709041649 OpSys=z/OS 1.6.0 User=DRA
File List Utilities System Window Swap Help
-SELCOPY
File View Go StepOver StepInto ReRun Window Help ? Sv ToF BoF Pfx < >

```

--SYSIN:                                     Size=47  Alt=0,0;0
Command>                                     Scroll> Csr
000001 *
000002 *
000003 * SELCOPY to write a new data set containing whole, variable length
000004 * records from a binary data set containing imbedded ASCII End-of-Line
000005 * characters (CRLF - X'0D0A').
000006 * Binary data set created by FTP of ASCII text PC file to IBM z/OS.
000007 *
000008 * <e djg.sq11609.fb | Original PC file in fixed len ASCII fmt.
000009 * <e dra.sq11609.vb | Converted output file in variable len EBCDIC fmt
000010 *
000011 opt worklen=32760  nordw          * Suppress RDW if input is RECFM=Y
000012 *
000013 @inp=1 stopaft=1          * Initialize next input record position
000014 *
000015 if pos 1, @inp-1 = X'0D0A' ptr=@crlf * End-of-Line (CRLF) found
000016 then do GotEOL            * Process data for output.
000017 then pos 1 = @inp @crlf-2 at @crlf+2 * Unprocessed data to pos 1
000018 then @inp = @inp-@crlf-1 * Adjust input data pos.
000019 then goto get            * Find next EOL terminator.
000020 *
000021 read indd dsn='djg.sq11609.fb' into @inp * Input next record.
000022 if eof indd then do GotEOF * End-of-File ?
000023 *
000024 @inp = @inp+lrecl        * End pos for next record.
000025 goto get                * Repeat Process.
000026 *
000027 *
000028 ==GotEOL==              ** Process original
000029   cvae   pos 1, @crlf-1 * Convert ASCII to EBCDIC.
000030   write outdd from 1, @crlf-1 * Write the record.
000031   print  from 1, @crlf-1 stopaft=5 * Print 1st 5 records.
000032   =return=
000033 *
000034 ==GotEOF==              ** Processing following End-of-File. **
000035 * If FTP was to a RECFM=F data set, then, unless the size in bytes of
000036 * the transferred file is an exact multiple of the LRECL, the last
000037 * record is padded with X'00'.
000038 * Warn message to console if non-zero data after last EOL terminator.
000039 *
000040 if @inp > 1 * Any residual data ?
000041 and pos 1, @inp-1 <> X'00' * Residual data not X'00's
000042 then cvae pos 1, @inp-1 * Convert ASCII to EBCDIC.
000043 then plog \
000044 "Warning.. The following data follows the last record EOL character(s
000045 then plog " " times 2 * WTO 2 blank lines.
000046 then plog from 1, @inp-1 ty=d pw=80 * WTO data in Dump format.
000047 *
000048 if pos 1, @inp-1 = X'0D0A' ptr=@crlf * End-of-Line (CRL
000049 2. then do GotEOL * Process data for
000050 * * * End of File * * *

```

Track @ pointer in Red

Current Step

```

--Work Area                                     -+X
Command>
1 30303031 302C4348 52495354 494E452C .....+.
17 492C4841 41532C41 30302C31 3936352D .....&
33 30312D30 312C0502 45532C46 2C313933 .....&
49 332D3030 2B31342C 35323735 302E3030 .....(.....<
55 000A3030 3032302C 4D494348 41454C2E .....(.....<
81 4C2C5448 4F4D5053 4F4E2C42 30312C31 <...|(&|.+.
97 3937332D 31302D31 302C4D41 4E414745 .....(+...
113 522C4D2C 31393438 2D30322D 30322C34 ..(.....
129 31323530 2E30300D 0A303030 33302C53 .....

```

```

--SYSPRINT: DRA.SELCOPY.SQ11609A.SYSPRINT 133 Y SEQ Size=65 Alt--+X
Command>                                     Scroll> Csr
000029 *
000030 *
000031 7. if eof indd then do GotEOF
000032 8. then do eof * End-o
000033 *
000034 *
000035 9. @inp = @inp+lrecl * End pos for all data.
000036 10. goto get * Repeat Process.
000037 *
000038 *
000039 *
000040 ==GotEOL== ** Process original data record terminated
000041 -----
000042 11.   cvae   pos 1, @crlf-1 * Convert ASCII
000043 12.   write outdd from 1, @crlf-1 * Write the re
000044 13.   print  from 1, @crlf-1 stopaft=5 * Print 1st 5
000045 14.   =return=
000046 *
000047 *
000048 ==GotEOF== ** Processing following End-of-File. **
000049 -----
000050 * If FTP was to a RECFM=F data set, then, unless the size
000051 * the transferred file is an exact multiple of the LRECL,
000052 * record is padded with X'00'.
000053 * Warn message to console if non-zero data after last EOL
000054 *
000055 if @inp > 1 * Any residual
000056 and pos 1, @inp-1 <> X'00' * Residual dat
000057 then cvae pos 1, @inp-1 * Convert ASCII
000058 then plog \
000059 "Warning.. The following data follows the last record EO
000060 then plog " " times 2 * WTO 2 blank
000061 18. then plog from 1, @inp-1 ty=d pw=80 * WTO data in
000062 *
000063 19. =return=
000064 *
000065 *
000066 * * * End of File * * *

```


--CBLI for TSO 1.5B - Build=200709041649 OpSys=z/OS 1.6.0 User=DRA
File List Utilities System Window Swap Help

SELCOPIY
File View Go StepOver StepInto ReRun Window Help ? Sv ToF BoF Pfx <>

Storage Window

```

--SYSIN: DRA.LIB.JCL(SQ11609A) 251 Y PDS Size=47 Alt=0,0;0
Command>
|...+....1....+....2....+....3....+....4....+....5....+....6....+....7
000001 ** DRA.LIB.JCL(SQ11609A) *** L=006 --- 2007/07/20 15:41:21 (NBJ)
000002 *
000003 * SELCOPIY to write a new data set containing whole, variable length
000004 * records from a binary data set containing imbedded ASCII End-of-Line
000005 * characters (CRLF - X'0D0A').
000006 * Binary data set created by FTP of ASCII text PC file to IBM z/OS.
000007 *
000008 * <e djg.sq11609.fb | Original PC file in fixed len ASCII fmt.
000009 * <e dra.sq11609.vb | Converted output file in variable len EBCDIC fmt
000010 *
000011 opt worklen=32760 nordw * Suppress RDW if input is RECFM=Y
000012 *
000013 @inp=1 stopaft=1 * Initialise next input record position
000014 *
000015 if pos 1, @inp-1 = X'0D0A' ptr=@crlf * End-of-Line (CRLF) found
000016 then do GotEOL * Process data for output.
000017 then pos 1 = @inp-@crlf-2 at @crlf+2 * Unprocessed data to pos 1
000018 then @inp = @inp-@crlf-1 * Adjust input data pos.
000019 then goto get * Find next EOL terminator.
000020 *
000021 read indd dsn='djg.sq11609.fb' into @inp * Input next record.
000022 EOF !then
000023 pos for all
000024 eat Process.
000025 *
000026 =
000027 =
000028 =
000029 =
000030 writ
000031 pri
000032 =ret
000033 *
000034 ==Go
000035 * If
000036 * th
000037 * r
000038 * W
000039 *
000040 @inp > 1 * Any residual data ?
000041 d pos 1, @inp-1 <> X'00' * Residual data not X'00's
000042 then cvae pos 1, @inp-1 * Convert ASCII to EBCDIC.
000043 then plo
000044 Warning.. The following data follows the last record EOL character(s
000045 then plo
000046 then plo
000047 *
000048 *
000049 *
000050 *
000051 *
000052 *
000053 *
000054 *
000055 if @inp > 1 * Any residual
000056 and pos 1, @inp-1 <> X'00' * Residual dat
000057 then cvae pos 1, @inp-1 * Convert ASCII
000058 then plo
000059 "Warning.. The following data follows the last record EO
000060 then plo
000061 then plo
000062 *
000063 *
000064 *
000065 *
000066 * * * End of File * * *

```

Do not step through sub-routines.

Step into sub-routines.

```

000008 if pos 1, @inp-1 = X'0D0A' ptr=@crlf * End-of-Line (CRL
000009 2. then do GotEOL * Process data for
000010 * * * End of File * * *

```

```

--Work Area
Command>
1 30303031 302C4348 52495354 494E452C .....+..
17 492C4841 41532C41 30302C31 3936352D .....&....
33 30312D30 312C05052 45532C46 2C313933 .....&....
49 332D3038 2D31342C 35323735 302E3030 .....&....
65 000A3030 3032302C 4D494348 41454C2C .....&....
81 4C2C5448 4F4D5053 4F4E2C42 30312C31 <...|(&|.+.
97 3937332D 31302D31 302C4D41 4E414745 .....&....
113 522C4D2C 31393438 2D30322D 30322C34 ..(&....
129 31323530 2E30300D 0A303030 33302C53 .....&....

```

```

--SYSPRINT: DRA.SELCOPIY.SQ11609A.SYSPRINT 133 Y SEQ Size=65 Alt=-+X
Command>
WinX: Error - Nothing to Restore for DRA.SELCOPIY.SQ11609A.SYSPRINT
000029
000030
000031 7. if eof indd then do GotEOF
000032 8. then eof * End-o
000033
000034
000035 9. @inp = @inp+lrecl * End pos for all data.
000036 10. goto get * Repeat Process.
000037
000038
000039
000040
000041 ==GotEOL== ** Process original data record terminated
000042 -----
000043 11. cvae pos 1, @crlf-1 * Convert ASCII
000044 12. write outdd from 1, @crlf-1 * Write the re
000045 13. print from 1, @crlf-1 stopaft=5 * Print 1st 5
000046 14. =return=
000047
000048
000049 ==GotEOF== ** Processing following End-of-File. **
000050 -----
000051 * If FTP was to a RECFM=F data set, then, unless the size
000052 * of the transferred file is an exact multiple of the LRECL,
000053 * record is padded with X'00'.
000054 * Warn message to console if non-zero data after last EOL
000055 *
000056 *
000057 *
000058 *
000059 if @inp > 1 * Any residual
000060 and pos 1, @inp-1 <> X'00' * Residual dat
000061 then cvae pos 1, @inp-1 * Convert ASCII
000062 then plo
000063 "Warning.. The following data follows the last record EO
000064 then plo
000065 then plo
000066 * * * End of File * * *

```

--CBLI for TSO 1.5B - Build=200709041649 OpSys=z/OS 1.6.0 User=DRA

File List Utilities System Window Swap Help

SELCOPIY File View Go StepOver StepInto ReRun Window Help ? Sv ToF BoF Pfx <>

Storage Window

```

--SYSIN: DRA.LIB.JCL(SQ11609A) 251 Y PDS Size=47 Alt=0,0;0
Command>
|...+...1...+...2...+...3...+...4...+...5...+...6...+...7
000001 ** DRA.LIB.JCL(SQ11609A) *** L=006 --- 2007/07/20 15:41:21 (NBJ)
000002 *
000003 * SELCOPIY to write a new data set containing whole, variable length
000004 * records from a binary data set containing imbedded ASCII End-of-Line
000005 * characters (CRLF - X'0D0A').
000006 * Binary data set created by FTP of ASCII text PC file to IBM z/OS.
000007 *
000008 * <e djg.sq11609.fb | Original PC file in fixed len ASCII fmt.
000009 * <e dra.sq11609.vb | Converted output file in variable len EBCDIC fmt
000010 *
000011 opt worklen=32760 nordw * Suppress RDW if input is RECFM=Y
000012
000013 @inp=1 stopaft=1 * Initialise next input record position
000014
000015 if pos 1, @inp-1 = X'0D0A' ptr=@crlf * End-of-Line (CRLF) found
000016 then do GotEOL * Process data for output.
000017 then pos 1 = @inp-@crlf-2 at @crlf+2 * Unprocessed data to pos 1
000018 then @inp = @inp-@crlf-1 * Adjust input data pos.
000019 then goto get * Find next EOL terminator.
000020
000021 read b' into @
000022 if !then eo
000023
000024 @inp
000025 got
000026
000027
000028 ==GotEOL== ** Process original data record
000029 cvae pos 1, 1 *
000030 write outdd from 1, 1 * Write record.
000031 print from 1, 1 stopaft=5 * Print 5 records.
000032 =return=
000033
000034 ==GotEOF== ** Process following End-of-File
000035 * If FTP was to a RECFM= data set, then, unless the size in bytes of
000036 * the transferred file is an exact multiple of the RECL, the last
000037 * record is padded with X'00'.
000038 * Warn message to console if non-zero data after last EOL terminator.
000039
000040 if @inp > 1 * Any residual data?
000041 and pos 1, @inp-1 <> X'00' * Residual data not X'00's
000042 then cvae pos 1, @inp-1 * Convert ASCII to EBCDIC.
000043 then plog \
000044 "Warning.. The following data follows the last record EOL character(s
000045 then plog " times 2 * WTO 2 blank lines.
000046 then plog from 1, @inp-1 ty=d pw=80 * WTO data in Dump format.
000047
000048
000049
000050
000051
000052
000053
000054
000055
000056
000057
000058
000059
000060
000061
000062
000063
000064
000065
000066 * * * End of File * * *

```

Options Menu for tracking pointers.

Continue to next breakpoint

Line=1 Col=1 Alt=0,0;0 Size=47 Recl=251 Fmt=Y

```

--Work Area
Command>
1 30303031 302C4348 52495354 494E452C
17 492C4841 41532C41 30302C31 3936352D
33 30312D30 312C05052 45532C46 2C313933
49 332D3038 2D31342C 35323735 302E3030
65 000A3030 3032302C 4D494348 41454C2C
81 4C2C5448 4F4D5053 4F4E2C42 30312C31
97 3937332D 31302D31 302C4D41 4E414745
113 522C4D2C 31393438 2D30322D 30322C34
129 31323530 2E30300D 0A303030 33302C53

```

```

--SYSPRINT: DRA.SELCOPIY.SQ11609A.SYSPRINT 133 Y SEQ Size=65 Alt=-+X
Command>
WinX: Error - Nothing to Restore for DRA.SELCOPIY.SQ11609A.SYSPRINT
000029
000030
000031 7. if eof indd
000032 8. then do GotEOF
000033 then eo * End-o
000034
000035 9. @inp = @inp+lrecl * End pos for all data.
000036 10. goto get * Repeat Process.
000037
000038
000039
000040 ==GotEOL== ** Process original data record terminated
000041 -----
000042 11. cvae pos 1, @crlf-1 * Convert ASCII
000043 12. write outdd from 1, @crlf-1 * Write the re
000044 13. print from 1, @crlf-1 stopaft=5 * Print 1st 5
000045 14. =return=
000046
000047
000048
000049 ==GotEOF== ** Processing following End-of-File. **
000050 -----
000051 * If FTP was to a RECFM=F data set, then, unless the size
000052 * the transferred file is an exact multiple of the LRECL,
000053 * record is padded with X'00'.
000054 * Warn message to console if non-zero data after last EOL
000055
000056 if @inp > 1 * Any residual
000057 and pos 1, @inp-1 <> X'00' * Residual dat
000058 then cvae pos 1, @inp-1 * Convert ASCII
000059 then plog \
000060 "Warning.. The following data follows the last record EO
000061 then plog " times 2 * WTO 2 blank
000062 then plog from 1, @inp-1 ty=d pw=80 * WTO data in
000063
000064
000065
000066 * * * End of File * * *

```

--CBLI for TSO 1.5B - Build=200709041649 OpSys=z/OS 1.6.0 User=DRA
File List Utilities System Window Swap Help

SELCOPIY
File View Go StepOver StepInto ReRun Window Help ? Sv ToF BoF Pfx <>

Storage Window

```

--SYSIN: DRA.LIB.JCL(SQ11609A) 251 Y PDS Size=47 Alt=0,0;0
Command>
|...+...1...+...2...+...3...+...4...+...5...+...6...+...7
000001 ** DRA.LIB.JCL(SQ11609A) *** L=006 --- 2007/07/20 15:41:21 (NBJ)
000002 *
000003 * SELCOPIY to write a new data set containing whole, variable length
000004 * records from a binary data set containing imbedded ASCII End-of-Line
000005 * characters (CRLF - X'0D0A').
000006 * Binary data set created by FTP of ASCII text PC file to IBM z/OS.
000007 *
000008 * <e djg.sq11609.fb | Original PC file in fixed len ASCII fmt.
000009 * <e dra.sq11609.vb | Converted output file in variable len EBCDIC fmt
000010 *
000011 opt worklen=32760 nordw * Suppress RDW if input is RECFM=Y
000012 *
000013 @inp=1 stopaft=1 * Initialise next input record position
000014 *
000015 if pos 1, @inp-1 = X'0D0A' ptr=@crlf * End-of-Line (CRLF) found
000016 then do GotEOL * Process data for output.
000017 then pos 1 = @inp-@crlf-2 at @crlf+2 * Unprocessed data to pos 1
000018 then @inp = @inp-@crlf-1 * Adjust input data pos.
000019 then goto get * Find next EOL terminator.
000020 *
000021 read indd dsn='djg.sq11609.fb' into @inp * Input next record.
000022 if eof indd !then do GotEOF !then e
000023 *
000024 @inp = @inp+lrecl * End pos for all d
000025 goto get * Repeat Process.
000026 *
000027 *
000028 ==GotEOL== ** Process original data rec **
000029 cvae pos 1, @crlf-1
000030 write outdd from 1, @crlf-1 * Write the re
000031 print from 1, @crlf-1 stopaft=5 * Print 1st 5 ds.
000032 =return=
000033 *
000034 ==GotEOF== ** Processing following End-of-File. **
000035 * If FTP was to a RECFM=F data set, then, unless the size
000036 * the transferred file is an exact multiple of the LRECL, the last
000037 * record is padded with X'00'.
000038 * Warn message to console if non-zero data after last EOL terminator.
000039 *
000040 if @inp > 1 * Any residual data ?
000041 and pos 1, @inp-1 <> X'00' * Residual data not X'00's
000042 then cvae pos 1, @inp-1 * Convert ASCII to EBCDIC.
000043 then plog \
000044 "Warning.. The following data follows the last record EOL character(s
000045 then plog " times 2 * WTO 2 blank lines
000046 then plog from 1, @inp-1 ty=d pw=80 * WTO data in Dump format.
000047 *
000048 if pos 1, @inp-1 = X'0D0A' ptr=@crlf * End-of-Line (CRL
000049 2. then do GotEOL * Process data for
000050 * * * End of File * * *

```

Set Breakpoint at Cursor

```

--Work Area
Command>
1 30303031 302C4348 52495354 494E452C .....+..
17 492C4841 41532C41 30302C31 3936352D .....&....
33 30312D30 312C05052 45532C46 2C313933 .....&....
49 332D3038 2D31342C 35323735 302E3030 .....&....
65 000A3030 3032302C 4D494348 41454C2C .....&....
81 4C2C5448 4F4D5053 4F4E2C42 30312C31 <...|(&|.+.
97 3937332D 31302D31 302C4D41 4E414745 .....&....
113 522C4D2C 31393438 2D30322D 30322C34 .....&....
129 31323530 2E30300D 0A303030 33302C53 .....&....

```

```

--SYSPRINT: DRA.SELCOPIY.SQ11609A.SYSPRINT 133 Y SEQ Size=65 Alt=-+X
Command>
WinX: Error - Nothing to Restore for DRA.SELCOPIY.SQ11609A.SYSPRINT
000029
000030 if eof indd
000031 7. then do GotEOF
000032 8. then eof * End-o
000033
000034
000035 9. @inp = @inp+lrecl * End pos for all data.
000036 10. goto get * Repeat Process.
000037
000038
000039
000040 ==GotEOL== ** Process original data record terminated
000041 -----
000042 11. cvae pos 1, @crlf-1 * Convert ASCII
000043 12. write outdd from 1, @crlf-1 * Write the re
000044 13. print from 1, @crlf-1 stopaft=5 * Print 1st 5
000045 14. =return=
000046
000047
000048 ==GotEOF== ** Processing following End-of-File. **
000049 -----
000050 * If FTP was to a RECFM=F data set, then, unless the size
000051 * the transferred file is an exact multiple of the LRECL,
000052 * record is padded with X'00'.
000053 * Warn message to console if non-zero data after last EOL
000054 *
000055 if @inp > 1 * Any residual
000056 and pos 1, @inp-1 <> X'00' * Residual dat
000057 then cvae pos 1, @inp-1 * Convert ASCII
000058 then plog \
000059 "Warning.. The following data follows the last record EO
000060 then plog " times 2 * WTO 2 blank
000061 18. then plog from 1, @inp-1 ty=d pw=80 * WTO data in
000062
000063 19. =return=
000064
000065
000066 * * * End of File * * *

```



```

--SYSIN: CBL.DIST.S202.TXT(SELCIVP)      80 F PDSE      Size=84      Alt=0,0;0      +-x
Command>
|...+...1...+...2...+...3...+...4...+...5...+...6...+...7
000040 * Workare positions ...
000041 equ FileId      1      * Full
000042 equ IRecM      FileId+060      * Orig
000043 equ IRecU      IRecM+MaxLrecl  * Upper
000044 equ LogRec     IRecU+MaxLrecl  * LOG
000045 equ WLen       LogRec+500      * Leng
000046
000047 option worklen=WLen nordw
000048
000049 ** Logical Start **
000050 read INLIB dirdata into IRecM      * Read nex
000051 pos IRecM+L,IRecU-1 = ' '      * Blank out
000052
000053 ** Deal with DIRectory records **
000054 if dir
000055 then pos FileId = "<e 'lib(memb)" stopaft      Init Edit command
000056 then move 44 from dsn      to FileId+4,IRecM-      Move in lib name.
000057 thenif pos      FileId+4,IRecM-7      * Find blank.
000058 then pos @ = "(xxxxxxx)"
000059 then move 8 fr IRecM to @+1      Move in member na
000060 then goto get      *> * Number of files processed *
000061
000062 ** Left now with Data Recs only **
000063 upper from IRecM,IRecU-1 to IRecU      * Upper case input record.
000064 if      pos IRecU,IRecU+L-1 = 'INTERFACE'      ptr=@tmp1
000065 thenif pos @tmp1,IRecU+L-1 = 'ISPF'      ptr=@tmp2
000066 then do FoundIt      * Sub-routine.
000067 goto get      * Means go back to first read statement.
000068
000069 ==FoundIt==
000070 pos      IRecM-7 = '::
000071 cvbc 4 from uxincnt to IRecM-5 fmt
000072 lrecl = IRecM+L-1      * Increase lrecl
000073 write CMX
000074 print type=s
000075 pos LogRec+00 len 30 = pos FileId+3
000076 pos LogRec+30,LogRec+78= pos IRecM-1
000077 log fr LogRec l 79      s=50
000078 return      stopaft=50
000079 log 'Log suppressed for further occurences' s 1
000080 =return=
000081 *< if p 1,1 > 1 at 1 ptr=@tmp1 !t dummy      * Unset @tmp1
000082 *< if p 1,1 > 1 at 1 ptr=@tmp2 !t dummy      * Unset @tmp2
000083 goto get
000084
F1=StepOver F2=StepInto F4=Point-and-Shoot Options F13=Go F14=BreakPoint

000001 ** SELCOPY interactive execution started 2008/06/26 16:23:05 **
000002 * * * End of File * * *
    
```

Place Cursor on pointer

Now press PF4 for Options

```

--Current Input Record      +-x
Command>
1 40404040 40404040 40404040 40404040
17 40404040 40404040 40404040 40404040
33 40404040 40404040 40404040 40404040
49 40404040 40404040 40404040 40404040
65 40404040 40404040
    
```

```

--SYSPRINT: DRA.SELCOPY.SELCIVP.SYSPRINT 133 V SEQ      Size=103      Alt+-x
Command>
|...+...1...+...2...+...3...+...4...+...5...+...6...+...7
000067 6.      then move 8 fr IRecM to @+1      * Move
000068 7.      then goto get      *> * Number of files pro
000069
000070 ** Left now with Data Recs only **
000071
000072 8.      upper from IRecM,IRecU-1 to IRecU      * Upper case in
000073
000074 if      pos IRecU,IRecU+L-1 = 'INTERFACE'      ptr=@tmp1
000075 thenif pos @tmp1,IRecU+L-1 = 'ISPF'      ptr=@tmp2
000076 9.      then do FoundIt      * Sub-routine.
000077
000078 10.     goto get      * Means go back to first read
000079
000080 ==FoundIt==
000081 -----
000082
000083 11.     pos      IRecM-7 = '::9999]'
000084 12.     cvbc 4 from uxincnt to IRecM-5 fmt '9999' * Record n
000085 13.     lrecl = IRecM+L-1      * Increase lrecl for File id.
000086 14.     write CMX
000087 15.     print type=s
000088 16.     pos LogRec+00 len 30 = pos FileId+3
000089 17.     pos LogRec+30,LogRec+78= pos IRecM-1
000090 18.     log fr LogRec l 79      s=50
000091 19.     return      stopaft=50
000092 20.     log 'Log suppressed for further occurences' s 1
000093 21.     =return=
000094 *< if p 1,1 > 1 at 1 ptr=@tmp1 !t dummy      * Unset @tmp1
000095 *< if p 1,1 > 1 at 1 ptr=@tmp2 !t dummy      * Unset @tmp2
000096
000097 22.     goto get
000098
000099 *** ERROR 004 *** * * * * JOB ABNORMALLY TERMINATED * * * *
000100
000101
000102 * * * * * SELCOPY IS LICENSED BY COMPUTE (BRID
000103 ** EXPIRY DATE -
000104 * * * End of File * * *
    
```

```

--SYSIN: CBL.DIST.S202.TXT(SELCIWP) 80 F PDSE Size=84 Alt=0,0;0
Command> |...+...1...+...2...+...3...+...4...+...5...+...6...+...7
000046
000047 option worklen=WLen nordw
000048
000049 **
000050
000051
000052
000053 **
000054
000055 then pos
000056 then mov
000057 thenif p
000058 then po
000059 then mo
000060 then got
000061
000062 ** Left now with
000063 upper from
000064 if pos
000065 thenif pos @
000066 then do Foun
000067 goto get
000068
000069 ==FoundIt==
000070 pos
000071 cvbc 4 from uxin
000072 lrecl = IRecM+L-1
000073 write CMX
000074 print type=s
000075 pos LogRec+00 len
000076 pos LogRec+30,LogR
000077 log fr LogRec l 7
000078 return
000079 log 'Log suppressed
000080 =return=
000081 *< if p 1,1 > 1 at 1 ptr
000082 *< if p 1,1 > 1 at 1 ptr
000083 goto get
000084
000085 * * * End of File * * *
  
```

PF4 displays tracking and options menu.

```

--Current Input Record
Command>
1 40404040 40404040 40404040 40404040
17 40404040 40404040 40404040 40404040
33 40404040 40404040 40404040 40404040
49 40404040 40404040 40404040 40404040
  
```

Click on Track option

```

--SYSPRIN
Command> |...+...2...+...3...+...4...+...5...+...6...+...7
000070 ** Left now with Data Recs only **
000071
000072 upper from IRecM,IRecU-1 to IRecU * Upper case in
000073
000074 if pos IRecU,IRecU+L-1 = 'INTERFACE' ptr=@tmp1
ReCU+L-1 = 'ISPF' ptr=@tmp2
* Sub-routine.
* Means go back to first read
  
```

```

Command> if pos IRecU,IRecU+L-1 = 'INTERFACE...
Show Pos "@tmp1"
----- "@tmp1" <edit>
Track "@tmp1"
----- "@tmp1" <edit>
Track List
Break <toggle>
Goto EOJ
Window Layout
Edit Keys
  
```

```

000093 18. log fr LogRec l 79 s=50
000094 19. return stopaft=50
000095 20. log 'Log suppressed for further occurrences' s 1
000096 21. =return=
000097 *< if p 1,1 > 1 at 1 ptr=@tmp1 !t dummy * Unset @tmp1
000098 *< if p 1,1 > 1 at 1 ptr=@tmp2 !t dummy * Unset @tmp2
000099 22. goto get
000100
000101
000102 *** ERROR 004 *** * * * * JOB ABNORMALLY TERMINATED * * * *
000103
000104
000105 ** SELCOPY IS LICENSED BY COMPUTE (BRIDGEND) LTD +44 (165
000106 ** EXPIRY DATE -- 2009/07/14 **
000107 * * * End of File * * *
  
```



```

--SYSIN: CBL.DIST.S202.TXT(SELCIVP)      80 F PDSE      Size=84      Alt=0,0;0      +-+
Command>                               Scroll> Csr
|...+...1...+...2...+...3...+...4...+...5...+...6...+...7
000040                               * Workare positions ...
000041 equ FileId      1                * Full lib member fileid.
000042 equ IRecM      FileId+060         * Original Mixed case input record.
000043 equ IRecU      IRecM+MaxLrecl    * Upper cased copy of input record.
000044 equ LogRec     IRecU+MaxLrecl    * LOG output record.
000045 equ WLen       LogRec+500        * Length of Workare required.
000046
000047 option worklen=WLen nordw
000048
000049 ** Logical Start **
000050 read INLIB dirdata into IRecM      * Read next DIRectory
000051 pos IRecM+L,IRecU-1 = ' '         * Blank out any resid
000052
000053 ** Deal with DIRectory records **
000054 if dir
000055 then pos FileId = "<e 'lib(memb)" stopaft=1 * Init Edit
000056 then move 44 from dsn to FileId+4,IRecM-7 * Move in
000057 thenif pos FileId+4,IRecM-7 = ' ' * Blank.
000058 then pos @ = "(xxxxxxx)"
000059 then move 8 fr IRecM to @+1 * Move
000060 then goto get *> * Number of files pro
000061
000062 ** Left now with Data Recs only **
000063 upper from IRecM,IRecU-1 to I
000064 if pos IRecU,IRecU+L-1 = '
000065 thenif pos @tmp1,IRecU+L-1 = '
000066 then do FoundIt * Sub-ro
000067 goto get * Means
000068
000069 ==FoundIt==
000070 pos IRecM-7
000071 cvbc 4 from uxinct to IRecM-5
000072 lrecl = IRecM+L-1 * Increase
000073 write CMX
000074 print type=s
000075 pos LogRec+00 len 30 = pos FileId+3
000076 pos LogRec+30,LogRec+78= pos IRecM-1
000077 log fr LogRec l 79 s=50
000078 return stopaft=50
000079 log 'Log suppressed for further occurences' s 1
000080 =return=
000081 *< if p 1,1 > 1 at 1 ptr=@tmp1 !t dummy * Unset @tmp1
000082 *< if p 1,1 > 1 at 1 ptr=@tmp2 !t dummy * Unset @tmp2
000083 goto get
000084
F1=StepOver F2=StepInto F4=Point-and-Shoot Options F13=Go F14=BreakPoint

```

- Colour
- Blue
- Red
- Pink
- Green
- Turquoise
- Yellow
- White
- Off

Click on "Yellow"

```

--Current Input Record +-+
Command>
1 40404040 40404040 40404040 40404040
17 40404040 40404040 40404040 40404040
33 40404040 40404040 40404040 40404040
49 40404040 40404040 40404040 40404040
65 40404040 40404040

```

```

SELCOPY.SELCIVP.SYSPRINT 133 V SEQ Size=103 Alt+-+
Command> Scroll> Csr
|...+...2...+...3...+...4...+...5...+...6...+...7
then move 8 fr IRecM to @+1 * Move
then goto get *> * Number of files pro
000069
000070
000071 ** Left now with Data Recs only **
000072 8. upper from IRecM,IRecU-1 to IRecU * Upper case in
000073
000074 if pos IRecU,IRecU+L-1 = 'INTERFACE' ptr=@tmp1
000075 thenif pos @tmp1,IRecU+L-1 = 'ISPF' ptr=@tmp2
000076 9. then do FoundIt * Sub-routine.
000077
000078 10. goto get * Means go back to first read
000079
000080 ==FoundIt==
000081 -----
000082
000083 11. pos IRecM-7 = ';;9999]'
000084 12. cvbc 4 from uxinct to IRecM-5 fmt '9999' * Record n
000085 13. lrecl = IRecM+L-1 * Increase lrecl for File id.
000086 14. write CMX
000087 15. print type=s
000088 16. pos LogRec+00 len 30 = pos FileId+3
000089 17. pos LogRec+30,LogRec+78= pos IRecM-1
000090 18. log fr LogRec l 79 s=50
000091 19. return stopaft=50
000092 20. log 'Log suppressed for further occurences' s 1
000093 21. =return=
000094 *< if p 1,1 > 1 at 1 ptr=@tmp1 !t dummy * Unset @tmp1
000095 *< if p 1,1 > 1 at 1 ptr=@tmp2 !t dummy * Unset @tmp2
000096
000097 22. goto get
000098
000099 *** ERROR 004 *** * * * * JOB ABNORMALLY TERMINATED * * * *
000100
000101
000102 * * * * * SELCOPY IS LICENSED BY COMPUTE (BRID
000103 ** EXPIRY DATE -
000104 * * * End of File * * *

```

```

--SYSIN: CBL.DIST.S202.TXT(SELICVP) 80 F PDSE Size=84 Alt=0,0;0 --+X
Command> |...+...1...+...2...+...3...+...4...+...5...+...5...+...7
000046
000047 option worklen=WLen nordw
000048
000049 ** Logical Start **
000050 read INLIB dirdata into IRecM
000051 pos IRecM+L,IRecU-1 = ' '
000052
000053 ** Deal with DIrectory records **
000054 if dir
000055 then pos FileId = "<e 'lib(memb)" stopaft=1 * Init file command
000056 then move 44 from dsn to FileId+4,IRecM-7 * Move in lib name.
000057 thenif pos FileId+4,IRecM-7 = ' ' * Find blank.
000058 then pos @ = "(xxxxxxx)"
000059 then move 8 fr IRecM to @+1 * Move in member na
000060 then goto get * * Number of files processed *
000061
000062 ** Left now with Data Recs only **
000063 upper from IRecM,IRecU-1 to IRecU * Upper case input record.
000064 if pos IRecU,IRecU+L-1 = 'INTERFACE' ptr=@tmp1
000065 thenif pos @tmp1,IRecU+L-1 = 'ISPF' ptr=@tmp2
000066 then do FoundIt * Sub-routine.
000067 goto get * Means go back to first read statement.
000068
000069 ==FoundIt==
000070 pos IRecM-7 = ':;9999|'
000071 cvbc 4 from uxinct to IRecM-5 fmt '9999' * Record number.
000072 lrecl = IRecM+L-1 * Increase lrecl for File id.
000073 write CMX
000074 print type=s
000075 pos LogRec+00 len 30 = pos FileId+3
000076 pos LogRec+30,LogRec+78= pos IRecM-1
000077 log fr LogRec l 79 s=50
000078 return stopaft=50
000079 log 'Log suppressed for further occurrences' s 1
000080 =return=
000081 *< if p 1,1 > 1 at 1 ptr=@tmp1 !t dummy * Unset @tmp1
000082 *< if p 1,1 > 1 at 1 ptr=@tmp2 !t dummy * Unset @tmp2
000083 goto get
000084
000085 * * * End of File * * *

F1=StepOver F2=StepInto F4=Point-and-Shoot Options F13=Go F14=BreakPoint

```

All occurrences of pointer @tmp1 are now shown in Yellow.

```

--Current Input Record --+X
Command>
1 40404040 40404040 40404040 40404040
40404040 40404040 40404040 40404040
40404040 40404040 40404040 40404040
40404040 40404040 40404040 40404040
40404040 40404040

```

```

--SYSPRINT: DRA.SELCOPY.SELICVP.SYSPRINT 133 V SEQ Size=106 Alt--+X
Command> |...+...1...+...2...+...3...+...4...+...5...+...6...+...7
000059
000070 ** Left now with Data Recs only **
000071
000072 8. upper from IRecM,IRecU-1 to IRecU * Upper case in
000073
000074 if pos IRecU,IRecU+L-1 = 'INTERFACE' ptr=@tmp1
000075 thenif pos @tmp1,IRecU+L-1 = 'ISPF' ptr=@tmp2
000076 9. then do FoundIt * Sub-routine.
000077
000078 10. goto get * Means go back to first read
000079
000080
000081 ==FoundIt==
000082 -----
000083 11. pos IRecM-7 = ':;9999|'
000084 12. cvbc 4 from uxinct to IRecM-5 fmt '9999' * Record n
000085 13. lrecl = IRecM+L-1 * Increase lrecl for File id.
000086 14. write CMX
000087 SELCOPY REL 2.02 AT CBL - Bridgend UK (Internal Only)
000088 -----
000089
000090 15. print type=s
000091 16. pos LogRec+00 len 30 = pos FileId+3
000092 17. pos LogRec+30,LogRec+78= pos IRecM-1
000093 18. log fr LogRec l 79 s=50
000094 19. return stopaft=50
000095 20. log 'Log suppressed for further occurrences' s 1
000096 =return=
000097 *< if p 1,1 > 1 at 1 ptr=@tmp1 !t dummy * Unset @tmp1
000098 *< if p 1,1 > 1 at 1 ptr=@tmp2 !t dummy * Unset @tmp2
000099 22. goto get
000100
000101
000102 *** ERROR 004 *** * * * * JOB ABNORMALLY TERMINATED * * * *
000103
000104
000105 ** SELCOPY IS LICENSED BY COMPUTE (BRIDGEND) LTD +44 (165
000106 ** EXPIRY DATE -- 2009/07/14 **
000107 * * * End of File * * *

```

Education

- Extensive FIRSTUSE tutorial with first access.
 - Guides user through commands and facilities.
 - Forms basis for users command centre file.
- HTML based HELP menus.
- SELCOPY Interactive training course available.
 - See RSM Technologies web site.
- Webex Interactive Demonstrations.
- WebEx Pre-recorded Tutorials.

Miscellaneous

- These slides provide only a limited sample of the SELCOPY Interactive Environment.
- Browse to www.cbl.com to:
 - Download manuals.
 - Links to Training Partners.
- CBL support is free to all licensed customers.
 - We welcome any feedback.

SELCOPY Interactive

Integrates the tools most commonly used in day to day activities.

Visually extends concurrent application usage and maximises individual productivity.

SELCOPY/interactive

Thank You

Monday, March 01, 2010

David Austin
Technical Liaison Manager
Compute (Bridgend) Ltd

The logo for CBL, consisting of the letters 'CBL' in a stylized, handwritten font.